



Shreveport Geological Society **NEWSLETTER**

Volume 52, No. 5

January 2013



See More



SGS1.ORG

An Emerging Shale Play p.11

Save the Date: Feb. 15 SGS Dinner Meeting

Shreveport Geological Society

Officers and Board Members 2012-2013

- President**..... **Larry Frizzell**
TMR Exploration, Inc., P.O. Box 5625, Bossier City, LA 71171
318-746-3616, larry@tmrex.com
- First Vice President**..... **Joe A. Lott**
Milestone Energy, L.L.C., 333 Texas St., Suite 516, Shreveport, LA 71101
318-212-0470, Fax: 318-212-0469, jlott100@bellsouth.net
- Second Vice President**..... **Greg Zerrahn**
Palmer Petroleum, 401 Edwards St., Suite 1400, Shreveport, LA 71101
318-222-0517, Fax: 318-424-3256, gzerrahn@palmerpetro.com
- Secretary**..... **Orville Roger Berg**
BER-EX-CO, Inc., 400 Travis Street, Suite 1612, Shreveport, LA 71101
318-220-0300, orberg@bellsouth.net
- Treasurer**..... **Jared Dysart**
Tensas Delta Exploration, L.L.C., 401 Edwards St., Suite 1900, Shreveport, LA 71101
318-222-0026, jdysart@tensasdelta.com
- Board Member**.....**Matthew Chumley**
Nadel and Gussman, L.L.C., 330 Marshall St., Suite 700, Shreveport, LA 71101
318-220-7074, Fax: 318-220-7075, mchumley@naguss.com
- Board Member**..... **Morris Nichols**
Stroud Exploration Co., L.L.C., P.O. Box 565, Shreveport, LA 71162
318-425-0101, Fax: 318-425-2211, mnichols@stroudexploration.com
- Board Member**..... **Tim H. Marshall**
Marshall-Wuellner, Inc., 333 Texas Street, Suite 608, Shreveport, LA
318-429-2250, timgeo@shreve.net
- Board Member**..... **Robert B. “Ben” Robinson**
Cypress Operating, Inc., 330 Marshall Street, Suite 930, Shreveport, LA 71101
318-424-2031, Fax: 318-425-8140 ben.robinson@cypressop.com
- Immediate Past President**..... **Dan G. Scurlock**
Independent, P.O. Box 1392, Shreveport, LA 71164-1392
318-222-4550, tedanexp@yahoo.com

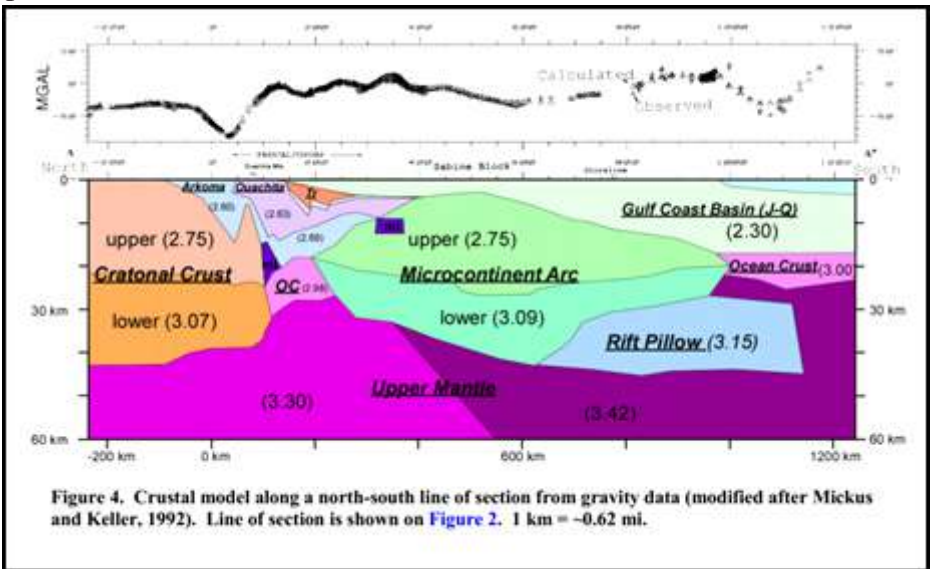
Faithful Friends 2012-2013

Anderson Feazel Management, Inc.	Kingwood Exploration, L.L.C.	Alan Schlichtemier
Baker Hughes	Marlin Exploration, L.L.C.	Schlumberger Well Services
Baldwin Madden Energy	Milestone Energy, L.L.C.	Security Exploration, Inc.
David L. Billingsley, Jr.	Muslow Oil & Gas, Inc.	Spanoil Exploration, L.L.C.
Cypress Operating, Inc.	Oden & Associates, L.L.C.	Scott D. Stroud
Geological Drafting Consultants	Palmer Petroleum, Inc.	TDX Holdings, L.L.C.
Gerard Associates, L.C.	Mike Rogers Drilling Company, Inc.	Toledo Mudlogging, Inc.
Grigsby Petroleum, Inc.	Sartor-Richardson, L.L.C.	Jamey Walker
Hardin International Processing, Inc.	Jon Saye	Joe R. White, Jr.
Hill Geophysical Consulting		



Larry Frizzell

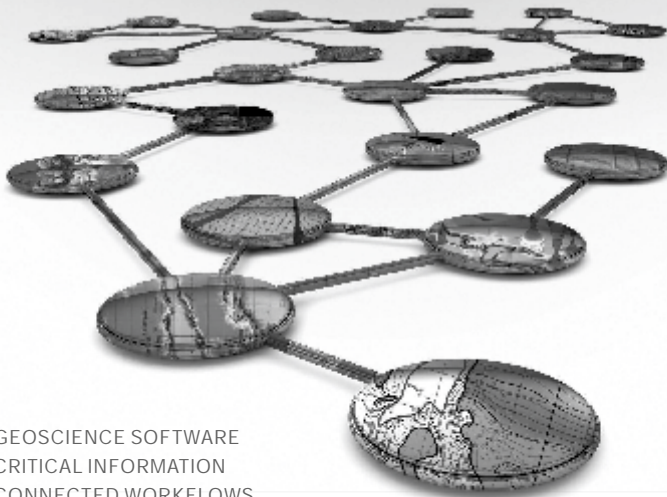
The December monthly meeting featured a presentation by Dr. Thomas Ewing on the uplifts in the northern Gulf Coast. It was a very informative talk, but if you're like me, you would like to look at some of the images in a little more detail. As Dr. Ewing mentioned, much of the material shown in the presentation can be found in the Transactions of the 59th annual convention of the G.C.A.G.S. held here in Shreveport in 2009. Reviewing the paper may help you remember some things Dr. Ewing addressed in his presentation.



Stop by the SPDA Library to look at a copy of the 2009 Transactions in print.

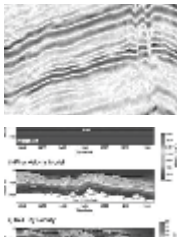
Image from Dr. Ewing's presentation

-continued on page 3



- > GEOSCIENCE SOFTWARE
- > CRITICAL INFORMATION
- > CONNECTED WORKFLOWS

CONNECTED AT EVERY TOUCH POINT



Streamline data transfer and simplify project sharing with IHS geoscience software and critical O&G information.

The IHS suite of geoscience software—which includes IHS Petra[®], Kingdom[®], LOGarc[™] and GeoSyn[™]—is designed to seamlessly connect to the industry's leading source of critical Oil & Gas information, eliminating the need to move data manually from source to source and project to project. With this powerful new combination, users can streamline data transfer, enhance database performance and simplify project sharing. The result? Workflows that connect like never before.

Connected workflows mean that IHS customers spend less time looking for data and more time looking for the next big opportunity. It's just one of the many ways that IHS helps to advance the decisions that advance the Oil & Gas industry.

Find out more at IHS.com/geoscience



The joint SGS/ALTAPL Christmas party was a big success. I saw several familiar faces and met a couple of new folks as well. It's always a good time of fun and fellowship.



The Glenn Rainey Band played lively tunes for the Christmas party.

*Photo by
Carla Carter
Boughton of
ALTAPL*

Matthew Chumley is assembling samples for a geological rock and mineral kit that members can utilize when addressing local schools about geology. He is starting with some basic samples, but he would love to add more samples to the kit. If you have any extra specimens or interesting pieces of core, etc., please consider donating them to the SGS Rock and Mineral Kit. They will be put to good use. Matthew's contact information is on the inside of the front cover of this Newsletter.



I'm keeping this letter brief – Christmas shopping and all...

Specimens collecting dust? Donate them to the SGS Rock and Mineral Kit to show students geology rocks.

Photo by Rachel Hill

I hope everyone enjoyed a safe and joyous holiday season.

-Larry Frizzell

Be a part of URTeC, where oil & gas professionals will train the way they work — using an integrated approach.

UNCONVENTIONAL

RESOURCES TECHNOLOGY CONFERENCE

FUELED BY SPE • AAPG • SEG

12-14 AUGUST 2013 / COLORADO CONVENTION CENTER / DENVER

Helping companies like yours hit the sweet spot

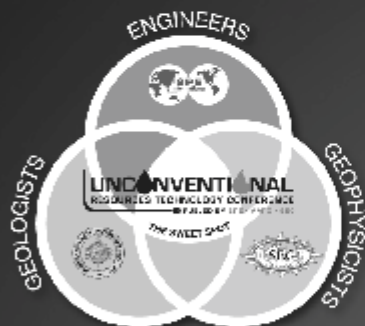


EXHIBIT  SPONSOR  ATTEND 

As unconventional become conventional, you'll find several choices of conferences, but one event stands apart. The Unconventional Resources Technology Conference is uniquely designed to help asset teams succeed. So whether you're searching for the next big thing, or simply looking to connect with geologists, engineers, geophysicists and more, URTeC is for you.

URTeC...

- is uniquely designed for asset teams (geologists, geophysicists, engineers and business managers working together to develop unconventional resources)
- is backed by 3 of the world's leading scientific associations (SPE, AAPG, SEG)
- was developed based on input from oil company professionals
- focuses on all North American shale plays
- will feature a peer-reviewed, science-based conference
- will feature an exhibition showcasing the latest technologies, products and services



URTeC. The integrated event for oil & gas asset teams.
www.URTeC.org

Calendar of Events

View this interactive calendar at sgs1.org

January 8

Board Meeting; 11:45 a.m.-1 p.m.; Petroleum Club 15th Floor

January 11

Make your reservation for the January meeting

January 15

Members' Meeting; 11:30 a.m.-1 p.m.; Petroleum Club 15th Floor

Fifth Annual Geology & Wine SGS Dinner Meeting
Friday, February 15th at 6 p.m. at the Petroleum Club
RSVP gzerrahn@palmerpetro.com

Is there something you'd like to see in the newsletter? Just let me know! I look forward to hearing from you. - *Rachel Hill*
E-mail: 1RachelHill@gmail.com or Phone 318-221-3329

On the Cover: "On the Road to Seville" by Kevin Hill. Photo taken on the A-92 in Spain. This year, your SGS bulletin tours the geology of Europe.
Background images: p.1, "White Bull", p.7 "Green Wild and Free". From original paintings by Artist Jerry Wray. Enjoy more at www.JerryWray.com

LRG **LAFAYETTE** **GEOLOGICAL** **RESEARCH** **CENTER, LLC**

201 Heymann Blvd., Suite 33 • Lafayette, LA 70503
Tel: 337-233-8197 • Fax: 337-233-8177

COVERAGE:

- Louisiana / Federal / State Offshore
- *Multi State Geo Tech Services • Completion Data
Production Data • Well Logs • Maps*

~ MEMBERSHIPS AVAILABLE ~

The Industry's Premier • Well Data Center

orders@lafayettegrc.com

CALL OR EMAIL TODAY FOR MORE INFORMATION!



The January Meeting

Make your RESERVATION

Kirk Barrell

presents

“The Tuscaloosa Marine Shale:
An Emerging Shale Play”

11:30 a.m. Tuesday, January 15

The Shreveport Petroleum Club, 15th floor

Cost: \$15, Children 10 and under \$ 8

We encourage members to invite guests, spouses, and friends to any of our meetings.

If you'd like a seat, kindly email or fax your **reservation by Friday, January 11 to:**

Greg Zerrahn

gzerrahn@palmerpetro.com

Fax: 318-424-3256

Name: _____

I will bring __ guest(s): _____

Sand Beach Office Plaza



*From the
\$170's*

~ OFFICE CONDOS FOR SALE OR LEASE ~

Sand Beach Office Plaza has 32 luxurious single level office suites, each containing approximately 1,150 square feet with large attic storage area. Custom buildings from 2,270 to 4,540 square feet are also available.

Please contact us for a free lease vs. own analysis to compare your existing lease with owning your own office. You will be shocked at the money you will save over the next twenty years.

*For best selection & pricing,
reserve your office now!*

*For more information
please call
Julie Day*

318.629.3572

7330 Fern Avenue, Ste. 104
Shreveport, LA 71105



**skrivanos
engineering, inc.**

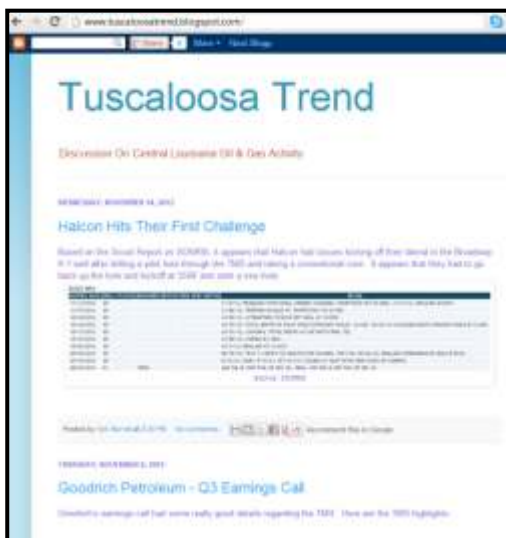
Kirk Barrell



Biography

Kirk Barrell currently serves as the President of Amelia Resources LLC, an oil and gas exploration company focused on Central Louisiana. Kirk holds geological degrees from Louisiana State University and Texas A&M University. He has worked as a geologist for twenty-three years exploring onshore Louisiana, the Gulf of Mexico, Mississippi, and Texas. Kirk began his employment with Amoco Production Company and has worked for several small independents as a prospect-generating geologist. At Amoco, he played a primary role in revitalizing the company's key assets in the Tuscaloosa Trend. That effort led to over 300 billion cubic feet of additional gas equivalent.

Kirk leads the business efforts for Amelia, where his primary duties include geological and geophysical interpretation, financial management, capital raising, and operational planning. Amelia Resources, LLC is currently focused on the Tuscaloosa Marine Shale and Austin Chalk trends across Central Louisiana. Kirk publishes a blog, "Tuscaloosa Trend," focusing on oil and gas activity across Central Louisiana (www.tuscaloosatrend.blogspot.com).





PROFESSIONAL DIRECTIONAL LTD

EXPERIENCE ENHANCES PERFORMANCE

Texas
(Corporate)

750 Conroe Park North Drive
Conroe, TX 77303
(800) 204-0009 or (936) 441-4266
Fax (936) 441-7268

Louisiana

655 Hwy. 171
Stonewall, LA 71078
(318) 925-5395 or (318) 925-5396
Fax: (318) 925-5397

North East

917 West Main Street, Suite 201
Bridgeport, WV 26330
(877) 384-7763 or (304) 842-7763
Fax: (304) 842-7767

Rocky Mountains

5125 Carroll Court, Suite 200
Evansville, WY 82636
(307) 233-8550
Fax: (307) 233-8554

**WHEN IT HAS
TO BE DONE
FAST !**



**COMPUTER
MAPPING FOR
THE OIL & GAS
INDUSTRY.
COLOR PLOTTING
AND DIGITIZING.**

**400 TRAVIS ST.
SUITE 1606
SPORT, LA
71101**



**JOHN
HARRELL,
OWNER
ANDY
CARDIN,
DRAFTSMAN**

PHONE

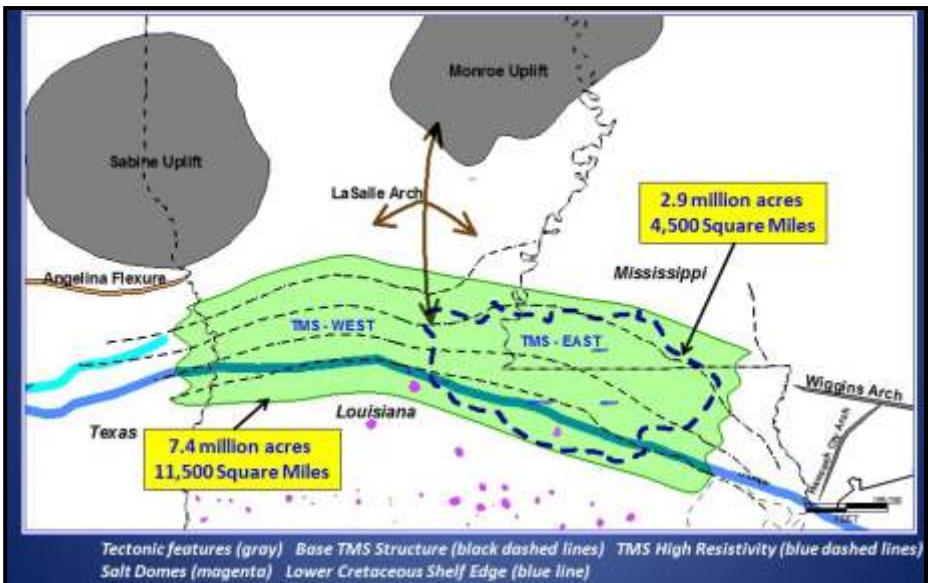
221-7780

Abstract

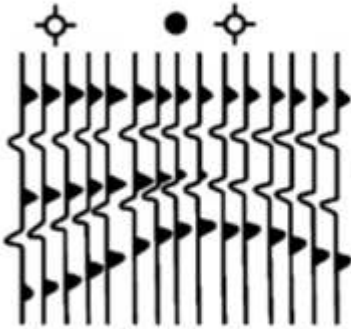
“The Tuscaloosa Marine Shale: An Emerging Shale Play”

Alfred C. Moore, a Mississippi wildcatter & geophysical engineer, worked up the first regional project targeting the Tuscaloosa Marine Shale (TMS), beginning in 1969. A former Sun Oil geophysical engineer, Moore sold it to colleagues at Sun Oil in 1970 for \$25,000. In 1971, Sun drilled a well in Pike County, Mississippi in which they cored 310’ of the TMS. The well was plugged as non-commercial after perforating twenty-four feet of the TMS. During the next four decades, several operators including Callon, UPRC, Worldwide Companies, Petroquest, and Encore would make attempts to prove the economics of this unconventional reservoir.

The Tuscaloosa Marine Shale is uppermost Cenomanian to early Turonian in age (92-94 million years ago) and was deposited during a major transgression during the Tuscaloosa “A” Sequence. The shale, a source rock, occurs above the prolific deep Tuscaloosa sands and averages 150-200’ in thickness. The basal part of the shale is more siliceous and calcareous than the upper portion. The shale



Hill Geophysical Consulting



Kevin B. Hill

*Integrating Geophysical Technology
with Geology*

**What's Under Your
Feet? Find out:
HILLGEO.COM**

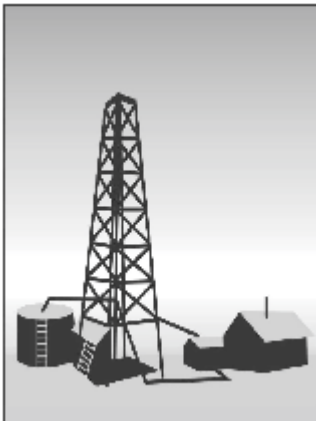


**415 TEXAS ST., SUITE 200
SHREVEPORT, LA 71101**

318.221.3329

kevin@hillgeo.com

CAMTERRA RESOURCES, INC.



Main Office
2615 East End Blvd. South
Marshall, Texas 75672
Telephone: (903) 938-9949
Fax: (903) 935-0521
Email: camterra@camterra.com

Chief Executive Officer:	Zach Carlile
President:	Paul Marchand
Land Manager/General Counsel:	Allen C. Stagers, Jr.
Asst. General Counsel:	Pam Johnson
Sr. Landman:	Steve Copeland
Sr. Landman:	Jason Derebery

Owning Properties in Texas, Louisiana, Arkansas, Mississippi, and New Mexico

exhibits higher clay content in Mississippi in contrast to higher silica and calcareous content to the south in Louisiana near the Lower Cretaceous Shelf Margin. Structurally, the TMS exhibits monoclinial dip from Mississippi down into Louisiana. The boundaries of the Tuscaloosa Marine Shale play are yet to be defined, but 7.4 million acres (11,500 square miles) could eventually be prospective. Drilling new wells and performing additional analyses will lead to the definition of the play boundaries and “sweet spots” where economics will define the full development of the shale.

In 2010, Devon Energy commenced a large lease acquisition effort across the TMS play. Encana followed, along with Goodrich Petroleum, EOG Resources, Indigo Minerals, Justiss Oil, and Halcon Resources. To date, over two million acres have been leased. Devon and Encana have led the drilling efforts across the play and thirteen horizontal wells have been completed over the past eighteen months. The most significant completion to date has been Encana’s Anderson 18H #1 well with a thirty day initial potential of 1094 barrels of oil equivalent per day. Encana’s Anderson 17H #1 well was drilled to a measured depth of 19547’ in 39 days. The longest lateral of 8932’ was achieved also by Encana. None of the recent completions have produced long enough to determine a decline rate, type curve, or recoverable reserves. Twenty three wells are currently in the permitted or planning stages. Active operators are Encana, Devon, Goodrich, EOG, and Halcon.

At this early stage in the play, economics are unknown. It is believed, that once the play is fully de-risked and in development mode, costs will range from \$9 12 million per well. Without known initial producing volumes and decline rates, it’s currently impossible to determine the economic viability of the play. Accurate prediction of estimated ultimate recoveries will occur after approximately 10-20 wells have produced for over one year and decline rates, hydrocarbon mix, and pressures are confirmed. Once this is established, meaningful economic scenarios and type curves can be generated.

Reserve your seat for this exciting talk by Friday, January 11
gzerrahn@palmerpetro.com

STROUD PRODUCTION, LLC

333 Texas Street, Suite 860

Shreveport, Louisiana 71101-5302

Voice: (318) 429-2260

Fax: (318) 429 2255

Email: ras@spllc.com



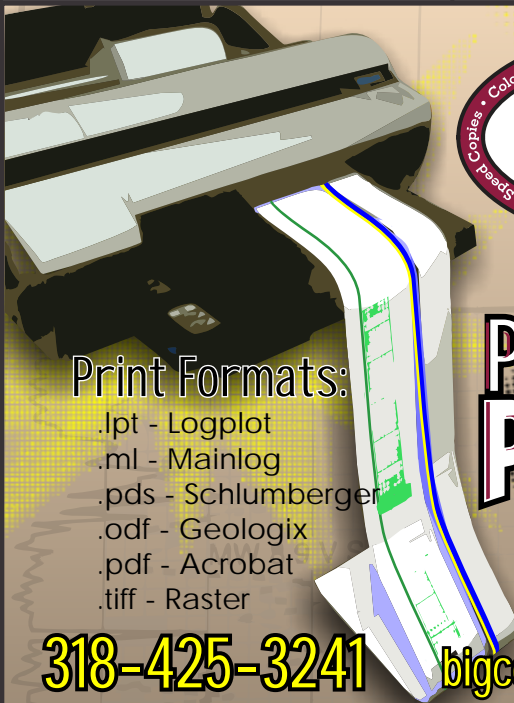
Curt Bateman | *Geophysicist*
CurtBateman@InspirationEnergy.net

Carl E. Gray | *Geologist*
CarlGray@InspirationEnergy.net

Sarah Bedgood | *Secretary/Geotech*

903-581-5800

821 ESE Loop 323
Suite 420
Tyler, TX 75701

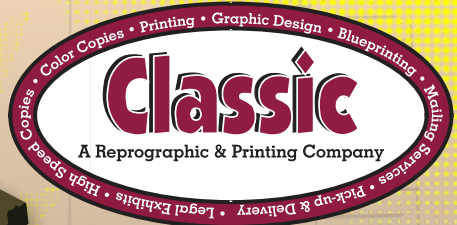


Print Formats:

- .lpt - Logplot
- .ml - Mainlog
- .pds - Schlumberger
- .odf - Geologix
- .pdf - Acrobat
- .tiff - Raster

318-425-3241

bigcolor@classicinc.com



OFFERS

PREFOLD LOG PRINTING

quantity discount
available



Geothermal Energy and Waste Heat to Power Utilizing Oil and Gas Plays

Plan to attend the Conference!

March 12-14, 2013

SMU campus in Dallas, Texas

Keynote Speaker

Chairman Jon Wellinghoff

Federal Energy Regulatory Commission

Interested in Sponsorship?

Maria Richards 214-768-1975 mrichard@smu.edu

Speaker abstracts requested: geothermal@smu.edu

Details & registration: <http://smu.edu/geothermal>



**SMU | GEOTHERMAL
LABORATORY**

**Dr. David Blackwell and Maria Richards
Roy M. Huffington Department of Earth Sciences
Dallas, TX 75275-0395**

This two-day international conference brings together leaders from business, engineering, finance, law, and research to explore specific topics relevant to capturing energy often overlooked or discarded during oil and gas production. The same technology can be used for both the waste heat to power (WHP) from surface equipment and the geothermal energy in well fluids to generate electrical power. Generating electricity on-site in the field reduces overall project expenses, eliminates CO₂ emissions, and decreases dependency on the local grid. Projects producing electricity using oil wells were successfully completed in Mississippi and Wyoming. Extensive geothermal research is ongoing in the Williston Basin. WHP installations are widespread in manufacturing sectors. Combining surface and reservoir sources of thermal energy maximizes the opportunity for return on investment.



**WILL-DRILL
RESOURCES
INCORPORATED**

416 TRAVIS, SUITE 1200
SHREVEPORT, LA 71101
OIL AND GAS EXPLORATION



401 Edwards Street, Suite 1200
Shreveport, LA 71101

P.O. Box 1367
Shreveport, LA 71164

office: (318) 222-8406
fax: (318) 222-6061
email: mei@marlinexploration.com

Jon Q-Petersen
President

Antie T. Orjias
V.P./Land Manager

Dean Giles
Secretary/Treasurer

Joe R. White, Jr.
Chief Geologist

S. Cody Lenert
Geologist

Ryan Q-Petersen
Land

Rhonda White
Admin. Assistant

Energy Development and Energy Services



Subsidiaries

-  **J-W Operating Company**
Exploration and Production
-  **J-W Midstream Company**
Gathering and Processing
-  **J-W Power Company**
Gas Compression
-  **J-W Measurement Company**
Engineered Measurement Packages
-  **J-W Wireline Company**
Cased-Hole Wireline Services

Nolan G. Shaw, Jr.
Exploration/Geological Manager
nshaw@jwenergy.com

15905 Wagh. Brothers Dr., Addison, Texas 75001

Ph: 972-233-8191 Fax: 972-991-0704

www.jwenergy.com



Strategic Speculative Surveys
Geophysical Data Marketing & Management

YOU'R
Full Service
National
Seismic Data
Marketing Firm

Dallas Contacts:

Larry Tull
Sandi Smith
Holly Durward

DALLAS DENVER HOUSTON NEW ORLEANS
OKLAHOMA CITY TULSA CORPUS CHRISTI

9400 N. Central Expressway, Suite 1211
Dallas, Texas 75231

214-371-1212 FAX 214-371-1208

www.seismicexchange.com

Like what you see?

It's easy to join the Shreveport Geological Society.

SHREVEPORT GEOLOGICAL SOCIETY, P.O. BOX 750 • SHREVEPORT, LA 71162

APPLICANT OR MEMBER PLEASE TYPE OR PRINT

Date: _____

LAST NAME FIRST INITIAL NICKNAME

COMPANY

POSITION OR TITLE

COMPANY MAILING ADDRESS CITY STATE ZIP CODE COMPANY PHONE

HOME ADDRESS CITY STATE ZIP CODE HOME PHONE

FAX NUMBER EMAIL ADDRESS CELL PHONE

SCHOOL	DEGREE	MAJOR	YEAR
_____	_____	_____	_____

PROFESSIONAL AFFILIATIONS AAPG GSA SEG SEPM AIME SPWLA
APGS PS AGU SIFES SPE OTHER _____

SPOUSE'S NAME: _____

PREFERRED MAILING ADDRESS
 HOME BUSINESS

OUTLINE OF EXPERIENCE: _____

CHECK HERE IF YOU WOULD LIKE THE NEWSLETTER EMAILED

QUALIFICATIONS FROM BY-LAWS

In order to be eligible for active membership, an applicant shall be engaged in the practice or teaching of geology or related sciences.

In order to be an associate member, an applicant shall be interested in geological science but not actively engaged in the practice or teaching of geology or related sciences.

To The Executive Board:

I hereby apply for ACTIVE ASSOCIATE membership in SHREVEPORT GEOLOGICAL SOCIETY and pledge myself to abide by its Constitution and By-laws.

Date: _____ Signature: _____

SPACE BELOW TO BE USED FOR PROCESSING ONLY

Membership Committee

Received _____

Approved for: Active
 Associate
 Student

Executive Board

Approved _____

Secretary

Date

Membership fees are per year:

Active: \$25 Associate: \$25 Student: \$5 Honorary: None

The annual dues cover the period of July through June of the following year.



MID-CONTINENT REGION

- Mary Ellen Lutey - V.P., General Manager
- William R. Downs - Exploration Manager
- Mark E. Dunham - Sr. Geologist
- John Mitchell - Sr. Geologist
- Damon Jordan - Sr. Geologist
- Paul Richardson - Sr. Geologist
- Arnab De - Sr. Geologist
- John Takach - Sr. Geophysicist
- Jill Klein - Sr. Geo. Tech
- Michael Jackson - Sr. Geo. Tech
- Robert Watt - Geo. Tech
- Jean Hunter - Geo. Tech

6120 South Yale Ave.- Suite 1300
 Tulsa, Oklahoma 74136-4210
 918-488-7600 SM-Energy.com

**R. LACY /
CRAIN ENERGY**

*Oil and Gas Investments
Exploration and Development*

222 EAST TYLER STREET
 LONGVIEW, TX 75601
 903-758-8276 (O)

Jamey Walker
 V. P. Exploration
 jwalker@rlacyinc.com

Jim Carpenter
 Sr. Geoscientist
 jcarpenter@rlacyinc.com

Chris Bresch
 Staff Geoscientist
 cbresch@rlacyinc.com

Hunter Brumble
 Geoscientist
 hbrumble@rlacyinc.com



**MUSLOW
OIL & GAS, INC.**

333 Texas Street
 Suite 2222
 Shreveport, LA 71101

Eric Weiss
President

(318) 221-8694
 Fax: (318) 227-2106

Address: 401 Edwards Street, Suite 1601
 Shreveport, Louisiana 71101

Telephone: (318) 227-8668
 Fax: (318) 227-9012

*Operating in the ArkLaTex, MAFIa,
 and South Texas Areas*

Kingwood Exploration, LLC
Oil & Gas Exploration
and Production



Kurt M. Ley

Exploration Manager & Partner

Robert E. Braswell

Engineering/Operations Manager & Partner

7607 Fern Avenue, Suite 602
Shreveport, Louisiana 71105

Phone: 318-524-9100

Fax: 318-524-9111

kurt.ley@kingwoodexploration.com
robert.braswell@kingwoodexploration.com



Established by G.M. Anderson

333 TEXAS ST., SUITE 2020

SHREVEPORT, LA 71101-5357

Phone: (318) 227-2000

Fax: (318) 425-5935



★ Milam, TX

★ Many, LA

The Horizontal Specialists!!

We work with the greatest companies
in the world, please give us a call
to see what we can do for you!!

James Small 214-683-1988

Joe Eidson 318-623-5077

Michael Danos 318-332-7673

P. O. Box 1209, Many, LA 71449

Security Exploration, Inc.

**401 Edwards Street, Suite 2015
Shreveport, LA 71101**



J. Stafford Comegys
President

Donna Walker
Geologist

Barbara Lyles
Office Manager

OIL & GAS EXPLORATION

Tel: (318) 222-1066

Fax: (318) 222-4932

**HARGROVE
SMELLEY
STRICKLAND
&
LANGLEY**

A PROFESSIONAL LAW CORPORATION

Louise F. Pearce
Attorney at Law

Bus: (318) 429-7200
Fax: (318) 429-7201
www.hssl-law.com
Email: lpearce@hss-law.net

American Tower, Suite 600
401 Market Street
Post Office Box 59
Shreveport, Louisiana 71161-0059

TMR Exploration, Inc.

Ray Lasseigne, President
Larry Frizzell, Exploration Manager
Mack Thomas, Operations Manager
Terry Antee, Consulting Geologist
Andrew Langley, Geologist

P. O. Box 5625
Bossier City, LA 71171-5625

(318) 746-3616

Fax (318) 746-6218

**SHREVEPORT
PETROLEUM DATA
ASSOCIATION, INC.**

333 Texas Street, Suite 900
Shreveport, LA 71101-3678

(318) 429-2237
FAX (318) 429-2441

No Initiation Fee
Demetra Morgan
MANAGER

FDX
E N E R G Y
FDX

Scott Sinclair, President
Glen Kelly, Vice President - Exploration
David Briggs, Vice President - Land
Ronnie Ebarb, Production Manager
Jared Dysart, Geologist
Adam Mastrodomenico, Geologist

401 Edwards Street, Suite 1900
Shreveport, Louisiana 71101
Ph. (318) 222-0026
Fax (318) 222-1898

Baldwin Madden Energy, LLC

*Oil and Gas Property
Acquisitions and Development*

George A. Baldwin, Jr.

Gregory K. Madden

Christopher D. Franks
Senior Geologist

Lonnie J. Shaw
Director of Accounting & Finance

(318) 429-2220

(318) 429-2229 Fax

333 Texas Street, Suite 1919
Shreveport, LA 71101-3676

Reynolds Drilling Company, Inc.

416 Travis Street, Suite 806
Shreveport, Louisiana 71101-5502

Phone: (318) 227-0118

Fax: (318) 227-0171

reydrill@bellsouth.net

Terry Pat Reynolds
President



401 Edwards Street
Suite 1400
Shreveport, LA
71101-3143
(318) 222-0517



**SPANOIL
EXPLORATION, LLC**

416 TRAVIS ST., SUITE 1015
SHREVEPORT, LA 71101
PHONE: 9318) 221-2371
FAX (318) 221-2391
ANTHONY J. SPANO
MANAGER



MILESTONE ENERGY, LLC

Oil & Gas Exploration and Development

Joseph A. Lott

Geologist / Managing Partner

Trae W. Milam

Geologist

Thomas A. Giles

Land Manager

333 Texas Street, Suite 516
Shreveport, Louisiana 71101
jlott100@bellsouth.net

Office: 318.212.0470
Fax: 318.212.0469

- Looking for Prospects
- Geophysical Consultant
- Landmark Graphics Core, Software
- Synthetic Seismograms, Modeling and Cross Sections



- Digitizing capability
- 2-D & 3-D Seismic Acquisition, Processing & Interpretation
- SeisVision 2-D & 2-D Interpretation and mapping software

Bobbie Ben Taylor - President

O: 123 S Broadway, Suite 102
Tyler, Texas 75702
Mob: (936) 521-3182

F: 7132 Holly Square Court,
Tyler, Texas 75703
Email: bbtaylor@att.net

LOOKING FOR PROSPECTS

Let me tailor your geophysical needs.

Cypress Operating, Inc.



STEVEN A. SINGLETARY

BEN ROBINSON

Petroleum Geologists

Office: (318) 424-2031
Fax: (318) 425-8140

330 Marshall Street, Suite 930
Shreveport, LA 71101

HALLIBURTON

Do you require an integrated approach to total well construction, formation evaluation, and optimized production? Make the jump to our team. We have the best local people for designing your well, performing state of the art formation evaluation, and planning and executing your completion.

Logging & Perforating
Production Enhancement (Stimulation)
Cementing
Security Bits
Tools, Packers, & TCP
Coil Tubing Services

Shreveport Sales 318-673-4400
Tyler sales 903-581-5263
Kilgore Operations 1-800-654-6926

THE PETROLEUM CLUB OF SHREVEPORT

Serving delectable cuisine to the
Shreveport Geological Society
regular luncheon meetings.

318-425-4251

JM JM EXPLORATION
COMPANY, L.L.C.

Al Jones
David Meadows
Managers

Gray Marston
Geologist

Mid South Tower Bldg.
416 Travis Street, Suite 1414
Shreveport, LA 71101

Phone: 318-425-7617
Fax: 318-425-1385
Email: jmexploration@comcast.net

BRAMMER ENGINEERING, INC.

Services:

- Drilling
- Completion
- Construction
- Production
- HSE
- Regulatory
- Land
- Accounting
- Risk

Management

- Information
Systems

www.brammer.com

318.429.2345 o • 318.429.2340 f

400 Texas Street • Suite 600 • Shreveport, LA 71101



WLS CORPORATION

**OIL & GAS
EXPLORATION & PRODUCTION**

Wayne L. Simpson
President

Philip Davis
Geologist

416 Travis Street, Suite 1006
Shreveport, Louisiana 71101

Office: (318) 425-2978
Fax: (318) 425-3166

JEFFREY W. CAPLIS
-CONSULTING FORESTER-

CELL: 318-617-9016
OFFICE: 318-745-3180
5691 POINT ROAD
DOYLINE, LA 71023

-complete forestry services-

- Timber Appraisals • Timber Management • Timber Cruising •
- Damage Appraisals • Tree Planting •

B.S. LOUISIANA TECH: SCHOOL OF FORESTRY



416 TRAVIS STREET ♦ SUITE 600
SHREVEPORT, LA 71101
PHONE ♦ (318) 425-0101
FAX ♦ (318) 425-2211

MORRIS NICHOLS
GARY ABRAMS
GEOLOGISTS

PRIDE EXPLORATION, INC.

400 Travis St., Suite 1604
Shreveport, LA 71101-3113
John Grunau, *President*
318-226-1300

NORTHBROOK ***ENERGY, LLC***

Prospects for Sale
Groundfloor Opportunities
East Texas - Louisiana

PLEASE CONTACT

Michael S. Willey
VP Exploration
903-570-0936
alpine@nctv.com

David Cherry
Managing Partner
214-778-1474
dcherry@petroveninc.com



Craig C. Barclay
Petroleum Geologist, L.L.C.

522 Dumbarton
Shreveport, LA 71106
Phone: (318) 869-2223
Mobile: (318) 426-2536
cbarclay1@comcast.net

DONNER PROPERTIES **OIL & GAS**

Diana L. Chance, Managing Director

P. O. Box 1346 Shreveport, LA 71164
(318) 227-2131 • Fax: (318) 222-5832
Cell: (318) 347-8848

www.donnerproperties.com



Weatherford

Richard 'Dick' Swindell
Technical Sales Advisor
Wireline & Borehole Seismic

Wireline Services
Weatherford International, Ltd.
1101 ESE Loop, 323, Ste. 200
Tyler, Texas 75701, USA

Direct: +1.903.594.4926
Main: +1.903.534.5243
Fax: +1.903.939.8907
Mobile: +1.903.530.4016
richard.swindell@weatherford.com
www.weatherford.com



FRANKS

EXPLORATION COMPANY, LLC

Bobby E. Jelks
President

Faith N. Gilbert
CFO

Edward Yarborough
Exploration Manager

James Light
Land Manager

P. O. Box 7665
Shreveport, LA 71135-7665
Phone: (318) 221-2688
Fax: (318) 459-2935

T. W. McGuire & Associates, Inc.

Registered Petroleum Engineers

416 Travis St., Suite 1400
P. O. Box 1763
Shreveport, LA 71166
(318) 222-0761
(318) 222-0799 Fax

James T. Maranto Robert T. Maranto



Michael W. Haight
Account Manager
US Land Wireline Systems

416 Travis Street, Ste. 504
Shreveport, LA 71101
318-227-8996 x 201 E-Fax: 1-281-582-4147
Cell: 318-230-5185
Email: michael.haight@bakerhughes.com



L. CHRIS JOHNSON
Manager

416 TRAVIS STREET
SUITE 1100
SHREVEPORT, LA 71101-3115
BUS: (318) 222-6652
FAX: (318) 222-6673
cjohnson@jerlic.com



**Professional
Permits
Plus
Inc.**

*Call us for all your
seismic data acquisition
permitting needs.*

Owned and Operated by Professional Geologists

**Woodie Huffman, CEO • Phil Lakin, President
Fred Nicholson, Vice President**

401 Edwards Street, Suite 826 • Shreveport, LA 71101-5510
Phone: (318) 221-0414 • Fax: (318) 425-0688
Email: 3pi@bellsouth.net

Office Phone
(318) 222-7123

Residence Phone
(318) 925-2348

David L. Billingsley, Jr.
Certified Petroleum Geologist

400 Travis Street, Suite 1230
Shreveport, LA 71101
DLBJR1@aol.com

Cell Phone
(318) 426-4320

GRIGSBY PETROLEUM, INC.

Oil & Gas Exploration
and Production

333 Texas St., Suite 2285
Shreveport, LA 71101
Phone (318) 425-5306
Fax (318) 425-3733

PETTITT ENGINEERING, INC.

B. E. PETTITT
Petroleum Engineer

416 Travis Street
Suite 1002

Shreveport, LA 71101-5503

Office: (318) 221-2153

Home: (318) 741-0267

COUTRET & ASSOC., INC.

Petroleum Reservoir Engineers
Property Evaluation, Reservoir Engineering
Fluid Injection, Property Management

Louisiana Tower
401 Edwards Street
Shreveport, LA 71101

Telephone: (318) 221-0482

Fax: (318) 221-3202

E-mail: rmcgowen@coutret.com

BER-EX-CO., INC.

Orville Roger Berg, Ph.D.

Exploration, Exploitation
Seismic Evaluation
Domestic, International

400 Travis St., Suite 910
Shreveport, LA 71101-3108
(318) 220-0300
orberg@bellsouth.net

9949 Beaver Creek Drive
Shreveport, LA 71106
(318) 798-1748



**Delta-T
Geophysical
Consulting, Inc.**

Comprehensive Geophysical Services

- Kingdom Suite 2d/3d pak
- Geographix
- GMA
- Neuralog
- Mesa 3-D Design
- Digirule

Woodie Huffman, CEO

401 Edwards Street, Suite 826
Shreveport, LA 71101-5510

Phone: (318) 221-0414

Fax: (318) 425-0688

Email: delta@bellsouth.net

Williamson OIL & GAS, INC.

Oil & Gas Development

Robert L. Williamson

Office: (318) 221-2923

Fax: (318) 221-3488

Email: bob@williamsonogi.com

400 Travis Street

Suite 1410

Shreveport, LA 71101

PROFESSIONAL SCOUTING SERVICE

DAVID E. REISER

400 Travis St., Ste. 208

Shreveport, LA 71101

Office: 318-227-0090

Home: 318-393-8844

Cowgill & Associates, L.L.C.

Oil & Gas Exploration & Production

Stephen C. Cowgill
Geologist/Managing Partner

P. O. Box 72180
Bossier City, LA 71172-2180
cowgill@suddenlink.net

Office: 318.429.2170

Fax: 318.429.1170

Cell: 318.455.9516

CSC ENERGY CORP. OIL & GAS EXPLORATION

Joel B. Chevalier
PRESIDENT

401 Edwards Street
Suite 820

Shreveport, Louisiana 71101

Office: (318) 221-5625 • Fax: (318) 459-1650

Mobile: (318) 469-5625

Remote Gas Analysis & Logging Services, LLC

Unmanned Gas Monitoring at its finest!

- Featuring a variety of latest chromatograph types for your unmanned gas logging needs
- Real time monitoring from any computer or smart phone & twice daily updates
- No minimum charges on number of logging days

Call & schedule a free demo with
Jay Leeper 325-716-9401

www.remotegasllc.com

GERARD ASSOCIATES, L.C.

OIL & GAS EXPLORATION
DEVELOPMENT AND ACQUISITIONS

J. A. Wojtkiewicz • Charles Gerard

625 Market St., Suite 250
Shreveport, LA 71101
Tel. (318) 221-0761 • FAX (318) 221-8835

ODEN & ASSOCIATES, LLC



Oil and Gas Exploration

Alan Schlichtemier
Geologist

Email: oden@shreve.net

400 Travis St., Ste. 1301 (318) 222-2400
Shreveport, LA 71101 Fax: (318) 226-0840



Kalmbach
Production Company, LLC

Sam Kalmbach
Geologist

400 Travis Street, Ste. 516 office: (318) 424-6566
Shreveport, LA 71101 cell (318) 470-9977
e-mail: kalmbachproduct@bellsouth.net

BARROW-SHAVER RESOURCES COMPANY

Oil & Gas Exploration & Development

Scott Owen Shaver

Managing Partner and Exploration Manager

903-593-5221 Office
903-593-1692 Fax
903-561-4711 Home
903-582-4711 Farm
903-245-4999 Mobile

977 Pruitt Place
Tyler, Texas 75703
sos-bsr@tyler.net

Justiss Justiss Oil Co., Inc.

P. O. Box 2990
Jena, LA 71342
318-992-4111
justissoil.com

- Drilling Contractor
- Oil & Gas Operator
- Turnkey Services
- Well Service & Workover
- Working Interest Participant

SOUTHERN MUDLOGGING, INC.



Mary Ann Norman

Office: (318) 325-3393
1-800-256-2530
P. O. Box 725
West Monroe, LA 71294

Mike Rogers Drilling Co., Inc.
Drilling & Interest Participation

MIKE ROGERS, PRESIDENT
CRAIG ROGERS, VICE PRESIDENT

Office: 870-234-2356 • Fax: 870-234-7487

1708 N. Vine Street • P. O. Box 126 • Magnolia, AR 71754
email: mrdc1981@gmail.com



Richard Eck

Sr. Account Manager (O/H) - Wireline Systems

115 Jordan Plaza Blvd, Ste 200

Tyler, TX 75704

Direct: 903-594-4113 Fax: 1-877-815-2175

Cell: 903-312-8661

Email: richard.eck@bakerhughes.com

SHREVEPORT GEOLOGICAL SOCIETY

Committees and Chairmanships

2012 - 2013

Advertising	Kurt Ley	Kingwood Exploration LLC	524-9100
Budget	Jared Dysart	Tensas-Delta Exploration Co.	222-0026
Continuing Education	Bill Meaney	Anderson Oil & Gas, Inc.	227-2000
Employment	Scott Caswell	Oden & Associates, L.L.C.	222-2400
Entertainment	Trae Milam	Milestone Energy, L.L.C.	212-0470
Environmental	David Williamson	Marshall Miller & Associates, Inc.	868-4848
Faithful Friends	Joe Lott	Milestone Energy, L.L.C.	212-0470
Field Trip	TBA		
5K Run	Cody Lenert	Marlin Exploration, L. L. C.	222-8406
Golf Tournament	Morris Nichols	Stroud Petroleum, Inc.	425-0101
Government Affairs	Scott Stroud	Stroud Petroleum, Inc.	425-0101
Historical	Ralph Richardson	Sartor-Richardson	869-4100
Honorary Membership/ Awards	David Billingsley, Jr.	Independent	222-7123
Investments	Jared Dysart	Tensas-Delta Exploration Co.	222-0026
Library	Ralph Richardson	Sartor-Richardson	869-4100
Membership	Roger Berg	BER-EX-CO, Inc.	220-0300
Membership Directory	Roger Berg	BER-EX-CO, Inc.	220-0300
Newsletter	Kevin Hill	Hill Geophysical Consulting	221-3329
Program	Greg Zerrahn	Palmer Petroleum, Inc.	222-0517
Publications	Demetra Morgan	Shreveport Petroleum Data Assn.	429-2237
Revel Mock Dig	Carrie Salinas Dawn Standridge	Virtus Environmental O'Brien Energy Co.	518-1622 865-8568
Scholarship Endowment	Gary Abrams	Stroud Petroleum, Inc.	425-0101
Scholarship Grants	Gary Abrams	Stroud Petroleum, Inc.	425-0101
Sci-Port Discovery	Gary Hanson	LSUS	458-6753
Tennis Tournament	Anthony Spano	Spanoil Exploration, Inc.	221-2371
Website	Rachel Hill	Hill Geophysical Consulting	221-3329
Youth Activities	Alan Brittain	O'Brien Energy Co.	865-8568
AAPG Delegates: (7/1/2010-6/30/2013)	Roger Berg	BER-EX-CO., Inc.	220-0300
(7/1/2010-6/30/2013)	Ralph Richardson	Sartor-Richardson	869-4100
Executive Assistant	Demetra Morgan	Shreveport Petroleum Data	429-2237
SGS Auxiliary President	Jo Bain		868-3050

HONORARY MEMBERS

James D. Aimer ^A	William E. Hayes ^A	W. W. Lincoln ^A	Walter H. Spears ^A
William F. Bancroft ^A	Roy T. Hazzard ^A	Clarence L. Moody ^A	William C. Spooner ^A
Michael W. Beckman ^A	Dr. Leo Hermann ^A	John T. Palmer	George D. Thomas ^A
B. W. Blanpied ^A	Charles Hoke	Thomas Philpott ^A	Arthur H. Trowbridge
Prentis L. Boatner, Jr.	Perry G. Holloway	William M. Plaster ^A	Henry J. Tyler ^A
John Franks ^A	Walter E. Hopper ^A	Gene R. Robinson	Claude N. Valerius ^A
Victor P. Grage ^A	E. B. Hutson ^A	C. Lane Sartor	Warren B. Weeks ^A
John Grunau	L. Lee Kincade	Erwin W. Saye ^A	Percy J. Wheeler
Frank Harrell ^A	Joseph A. Laird	Fred R. Schroeder ^A	B. Ross White
James B. Harris ^A	P. T. Todd Landes ^A	C. Ray Scurlock	R. M. Wilson ^A

(^ deceased)

Shreveport Geological Society
P. O. Box 750 • Shreveport, LA 71162

PRSRT STD
U.S. POSTAGE
PAID
SHREVEPORT, LA
PERMIT NO. 387