

LECS NEWSLETTER

Lilly Endowment Community Scholarship Pulaski County Community Foundation, Inc. April 2014



Looking for an opportunity to “give back”?

The Giving Back Scholarship recognizes Lilly finalists and provides a way to give back to the Pulaski County community at the same time. LECS scholars and their families have taken advantage of the opportunity by making contributions to the Giving Back Scholarship. Your gift may be mailed to PCCF at 127 E. Pearl Street, Winamac or donated online through the county website at www.pulaskionline.org. What a great way to pay it forward!



The 2013 Giving Back recipient is Emerald Blankenship from Winamac. Emerald is attending St. Mary's College to study Spanish and Business Management. Her parents are Patrick and Theresa Blankenship.

Past recipients since 2008 are: Sarah Paulsen, Holly Krohn, Michael Keller, Emily Paulsen, and Evan Kruger.

COLLEGE GRADUATES

MY FIRST YEAR AT COLLEGE

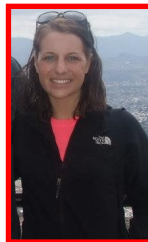
PCCF's 2012 Lilly Endowment Community Scholar completed his first year at college in Spring of 2013. Christopher Lippelt attends Rose-Hulman Institute of Technology where he is majoring in Engineering. Chris said, "I have certainly had all the of the troubles, triumphs, late-nights, and memories that go with the beginning of every college career.

The friends and knowledge gained have been worth the struggle many times over."

Last summer, Christopher secured a position as a counselor for the Rose-Hulman Accelerated Math and Physics program. He also spent a month working in the lab at Eli Lilly.



Tabatha Halleck and Joel Putt, 2009 Pulaski County Cohort, are the most recent LECS graduates. Tabatha graduated last May from Purdue University with a B.S. in Public Health. Tabatha plans to work in the public health sector in the Indianapolis area.



Joel also graduated from Purdue University in May of 2013 with a major in Agricultural Economics. He is currently working on the family farm and enjoys spending time with his wife and 2 year old son.

2013 LECS RECIPIENT



David Putt is Pulaski County's 2013 Lilly Endowment Community Scholarship recipient. This makes him the 32nd scholar since 1998. David is attending Purdue University and majoring in Pre-Medicine. He is a graduate of West Central High School.

Pulaski County Community Foundation, Inc.
P.O. Box 407 - 127 E. Pearl Street
Winamac, IN 46996
Phone - (574) 946-0906
Fax - (574) 946-0971

Coming soon!
PCCF's very own website

*In 2013 PCCF celebrated 15 years with the LECS program!
Check out the video and booklet with updated information
on our LECS scholars at www.pulaskionline.org.*