

Our Vision for Church Planting

- 2 What People Are Saying
- 3 About Pinnacle Church Planting Network
- 4 Beginnings / Results
- 6 What's Next
- 8 Sharing Financial Resources
- 9 Multiplying Leaders
- 10 5-Year Plan

What People Are Saying

“God is clearly at work through Stephen Ward and his team at Pinnacle Church.”



Gary Irby

“Pinnacle’s large and gifted team has helped them to gain momentum critical to a successful start. Lead Planter Stephen Ward is a strong, godly leader with significant missionary and church planting experience. He possesses the necessary combination of wisdom and teachability. Stephen and his team have truly caught the multiplication principle necessary for launching not only a church plant, but a network of churches. They clearly communicate a future vision that includes multiple congregations and are proactively implementing this vision. I highly commend this team and encourage full support of their mission by any who are able.”

Seattle Church Planting Director | Northwest Baptist Convention | 425.640.3676 | garyirby@aol.com

“It is my privilege to endorse Stephen Ward and the Pinnacle Church leadership team for church planting in Spokane through the Inland Empire Baptist Association.



Richard Kirk

“They have proven faithful, mature, dedicated, and consistent in their evangelism and church planting efforts in Spokane.”

It has been a joy to see their commitment being worked out in daily ministry and most exciting to see positive results relatively quickly in their ministry. More specifically, I am more encouraged by their building multiplication efforts into their one-on-one Bible studies as well as their worship services and small groups from the beginning of each relationship. May their tribe increase!

Church Health Catalyst | Northwest Baptist Convention | 425-478-0945 | rkirk@nw baptist.org

“I could not be more excited about The Edge Church in Cheney. This town needs them desperately. Cheney has approximately 11,000 residents as well as another 11,000 college students. Our plans with Cru have always been to be a part of reaching not only the university, but the town as well. We can’t do that alone. The Edge church in Cheney could not come at a better time. It seems like God is doing something incredible in the lives of college students. During the school year, we had nearly 40 students trust Christ, and many of them are plugged in and growing. Most of them attend The Edge in Cheney.

“We have long desired to partner with a church that shares our heart for lost people. After 4 years of looking, we believe The Edge is that church.”



Bobby Ulrich

Not only does The Edge aid in reaching lost students on campus, but they give students a tangible way to continue to build the Kingdom of God after graduation. It is no longer only a dream of mine to see lost students turning into Christ-centered, multiplying laborers that go on to become church planters in the Northwest. In Cheney, the harvest is truly plentiful, but the laborers are very few. We are excited for how our partnership with the Edge will continue to propel students into the harvest fields.”

Cru Director, Eastern Washington University | 509-432-9101 | bobby.ulrich@cru.org

About Pinnacle Church Planting Network

THE NEED

- Approximately **4%** attend an evangelical church on any given Sunday
- Only 1/3 claim any religious affiliation
- The metro population of over **650,000** needs a relationship with Jesus Christ
- Spokane is the regional hub of business, medicine, and education
- Approximately **45,000** students are attending universities in the Spokane Metro Area

OUR TEAM



Stephen & Karis Ward
Regional Preaching & Vision
Pastor / Children's Director



Brad & Beth Guest
Regional Executive & Small
Groups Pastor / Children's Director



Zach & Nicole Minton
Regional Missional Advancement
Pastor & Lead Pastor of
The Edge Church



Andy & Kate Ulrich
Regional Worship Pastor



Will Gassman
Regional Servant Evangelism
Director



Jason Donahue
Regional Ministries Director



Josh Grasse
Regional Missions Director



Devon Young
Regional Media Connections
Director



Sammie Roland
Regional Creative Arts
Director

Who Is Pinnacle?

OUR VISION is to multiply coaches, small groups and churches

OUR MISSION is to coach believers to love God and coach others

OUR STRATEGY is to coach people to grow authentic relationships with God, with those inside the church, and with those outside the church

Beginnings

- **June 2012 - Eighteen adults arrived to plant Pinnacle Church in Spokane**

- June through September 2012 - the team focused on
 - Building relationships with neighbors
 - Recruiting Christians to the vision of planting churches
 - 1-on-1 evangelistic Bible studies
 - Localized mailouts to invite people to a relational event at local parks and a preview service on the same weekend
 - Following up with guests to the relational events and preview services



Sarah Householder serving in the children's area

- June through September 2012 - God allowed us to build a relationship with Campus Crusade for Christ (CRU) at Eastern Washington University (EWU). By mid-September, we were sending leaders and our equipment to EWU to support CRU
- **September 30, 2012 - We officially launched as Pinnacle Church** in our downtown location at the Spokane Arena. We had 107 people in attendance including 18 children.
- March through August 2013 - Citywide mailouts to Cheney inviting people to relational events at parks and a preview service the same weekend. We saw as many as 145 people in preview services and baptized 11 people.
- **September 8, 2013 - We officially launched as The Edge Church** in the community center in Cheney; our attendance averaged over 90 during September.

Hardships

Before leaving Arkansas, several members of the team started experiencing health problems, including **Josh Grasse**, who had to go to the Mayo Clinic because of symptoms similar to Lou Gehrig's disease.

Robert & Karen McDaniel, who had sold most of their possessions to purchase an RV, started their trek to Spokane. In South Dakota, their RV caught on fire burning half of their possessions, including pictures and their clothes. After arriving in Spokane, their car developed mechanical problems as the result of the timing belt

breaking; this caused significant financial strain.

Peggy Chilcott & Kellye Long, single roommates, had their house broken into and most of their valuables were stolen.

Brad & Beth Guest have had several family issues: Brad's dad was in the hospital when they started the journey across the country. Brad's brother has dealt with several potentially serious health scares. Beth's dad, a pastor in Arkansas, lost his job at his church and was without a job for several months. During this time, Beth's grandfather passed away,



Our First Baptism

Results

- **107 people at our launch service at Pinnacle Church**
- **74 people at our launch service of The Edge Church**
- **30 people have been baptized** at Pinnacle Church and The Edge Church
- **10 small groups have been launched** with over 70 people meeting in homes, apartments, and dorm rooms all around Spokane and Cheney, with 2 of them ready to multiply this upcoming term; our small groups have seen people who label themselves as Hindu, Mormon, and atheist (with most attending church regularly)
 - Our attendance has grown from 18 at Pinnacle to over 200 people combined at the two churches in 1 year.
 - Nearly 40% of attendees are college students, and 60% are young families
 - Our partnership with CRU has also yielded growth for them as they have doubled in size this year and have seen over 40 students come to Christ

leaving her wheelchair-bound grandmother alone.

James Pharis has a sister 2,000 miles away with terminal cancer.

Several team members have depleted their entire life savings with a few dipping into retirement funds while looking for a job.

Through it all, the team has stayed committed to planting churches and the task of sharing Christ in their neighborhoods.

Significant Stories

- ▶ **Alexis had reached rock bottom and knew she needed Someone bigger in her life.** She was desperate to know Christ, but needed someone to explain the gospel. In September, while going through our “Explore Your Faith” 1-on-1 evangelistic Bible study, she surrendered her life and has been growing in her faith despite so many obstacles!
- ▶ **Phil, a professed non-Christian, came to a neighborhood block party and then came to church the next Sunday.** He started attending regularly. One Sunday he showed up to church with four other couples who all were unchurched. He then agreed to open his home for one of our small groups. He started going through our “Explore Your Faith” 1-on-1 evangelistic Bible study, became a Christian, was baptized, started leading our Greeters, and continues to be a contagious force in seeing more and more people attend small group and church.
- ▶ **Brad & Beth began immediately pouring into their neighbors** at the apartment complex where they lived. This led them to meet a couple who are part of the Mormon Church. The mom and daughter started attending small group in Brad and Beth’s home.
- ▶ **EWU students from Cheney started inviting friends and loading up in cars to come to Spokane for church.** Several college students rode a bus, a few 2 buses, to get to our church. Many walked at least 1/2 mile from the bus stop to the church. Over 50 of these students are helping us plant The Edge Church in Cheney.
- ▶ **Marie has a background where Jesus was taught, but not as God.** She had a strained relationship with her mom that led her to move out and into an emergency homeless shelter. She started attending Cru at Eastern Washington University and met Stephen. After a couple conversations with Stephen, she was able to see Jesus for who He is. She accepted Christ and was baptized at the 2nd preview service at The Edge. Her mom and brothers started attending with her. Her mom and teenage brother have both accepted Christ and were baptized at the 3rd preview service at The Edge.

What's Next?

"I am so excited about this next year. We hope many areas of our church grow, but we will stay focused on three key areas: evangelism, small groups, and church planting."

Evangelism

Small Groups

Church Planting



Evangelism

We will place a concentrated focus on building our evangelism system. As our strategy to reach out to the lost living in Spokane, we have developed a nine-week one-on-one Bible study entitled "Explore Your Faith" that all of our leaders, and many in our congregation, are seeking to use in their daily life. The goal is to share our faith with those who are open to exploring with us and at the same time immediately challenge them to share what they are learning with someone else.

We use connection cards to follow up with our guests at events and services. People who live in every section of the city have been trained to begin a conversation with guests, pray for them, and point them to a small group or "Explore Your Faith" study.

Small Group

Over the next year we will focus on expanding our small group system. Currently, 10 small groups in Spokane and Cheney meet in homes, apartments, and dorm rooms throughout the city. Our goal over the next year is to continue multiplying these. We have designed these groups so that anyone willing to facilitate a discussion can lead a group using video curriculum created to follow the weekly message. Our strategy is to keep things simple and easy to multiply.

Church Planting

Over the next year, we will take deliberate steps to continue our church planting system. This strategy affects everything we do. It keeps us simple

and always causes us to evaluate through the lens of multiplication. This focus motivates us to multiply everything we do. We have created the Pinnacle Church Planting Network through which we protect our vision for multiplying churches. The network owns all of the equipment and pays the staff. This process helps us stay focused on a shared vision for planting churches. Each church will be autonomous, but will sign a covenant tying them to the Network for the purpose of sharing staff, equipment and a common vision for multiplication. Our goal for this network is for churches to work together to see a church planting movement take place. We will focus on mentoring leaders to recreate each system that we have at Pinnacle Church and The Edge Church for the purpose of raising up leaders and planting more churches.

Part of our church planting multiplication strategy includes intentionally not allocating money toward buildings and full time staff for each church. We instead will utilize funds toward shared personnel, shared equipment, and shared ministry for the purpose of planting the most churches possible to reach the most lost people possible. We have remained simple enough that all the equipment necessary for our church fits in one trailer.

In 2014, we will purchase a trailer of equipment to relaunch The Edge Church in January of 2015 on Sunday mornings. In September 2015, we will purchase a trailer of equipment and launch Northface Church. In 2016, we will focus on developing Pinnacle, The Edge, and Northface churches, and continue to develop leaders for further multiplication of churches into other areas of the Spokane Metro Area. These churches will share regional staff. A strong component to the regional leaders' roles will be mentoring young leaders to carry out different roles in each church. For instance, the regional children's

Pinnacle Church Planting Budget

We are continually praying for partners who will come alongside us in praying for an awesome move of God in the Spokane Metropolitan Area, sending short-term mission teams, and giving financially to see a church planting movement take place. On this page, you will see an outline of how financial resources will be allocated for The Edge Church in 2014-15 and Northface Church in 2015. **On the back page, you will see two ways to give.**

2015 The Edge Church (relaunch January 2015 on Sunday Mornings)

DESCRIPTION	YEARLY COST
Facility Rent	\$30,000
Interns	
Children	\$4,800
Outreach	\$4,800
Staff	
Lead Pastor	\$10,000
Worship Pastor	\$10,000
Small Groups Ministry	\$1,000
College Ministry	\$3,000
Community Relational Events	\$5,000
Promotional Materials	\$5,000
Evangelism	\$5,000
YEARLY TOTAL	\$78,600
DESCRIPTION	1 ST YEAR COST ONLY
Trailer	\$7,000
Protective Road Cases	\$9,000
Portable Indoor/Outdoor Signs	\$7,000
Portable Media Equipment	\$43,000
Portable Children's Equipment	\$9,000
Preview Services	\$5,000
1ST YEAR COST ONLY TOTAL	\$80,000
1ST YEAR TOTAL COST	\$158,600

director will help recruit and mentor children's interns for each church. The regional small groups director will recruit and mentor small group interns for each church. This process will help protect the vision at each church while at the same time empower leaders to carry out the work of the ministry.

In addition to these systems, we as leaders at Pinnacle will also remain personally focused on being in God's Word and prayer. We know that apart from being in the center of God's will, spiritual and numerical growth is impossible. We don't want to manufacture or manipulate growth. We know that God is the only one who brings in a harvest. At the same time, we also want to be good stewards of the gifts (people) He brings us; so we will work hard, stay focused, and build healthy systems to find, keep, and care for God's gifts. We want to be ready when God unleashes His power in the Spokane metropolitan area.

ZAC AND NICOLE MINTON



Zac and Nicole were married in 2004. Zac wrestled with the call to ministry for a few years before surrendering to the ministry in 2007. Since then, he has preached just about every Sunday, including serving at a church for three years where he and Nicole learned a lot about church ministry. In December 2010, God blessed them with a little boy named Isaac. They are also awaiting the arrival of their first daughter, Lillian Eden in September. God is now leading them to plant Churches. Zac and Nicole have a strong desire do whatever it takes to take the Gospel to people, the message that will cross status barriers, language barriers, and cultural barriers. Their prayer is for the Lord to guide them and continue to give them that desire to reach people. Church planting is an exciting and scary journey but they know it's one that the Lord will see them through.

2015 Northface Church

DESCRIPTION	YEARLY COST
Facility Rent	\$30,000
Interns	
Children	\$4,800
Outreach	\$4,800
Staff	
Lead Pastor	\$10,000
Worship Pastor	\$10,000
Small Groups Ministry	\$1,000
College Ministry	\$3,000
Community Relational Events	\$5,000
Promotional Materials	\$5,000
Evangelism	\$5,000
YEARLY TOTAL	\$78,600
DESCRIPTION	1 ST YEAR COST ONLY
Trailer	\$7,000
Protective Road Cases	\$9,000
Portable Indoor/Outdoor Signs	\$7,000
Portable Media Equipment	\$43,000
Portable Children's Equipment	\$9,000
Preview Services	\$5,000
1ST YEAR COST ONLY TOTAL	\$80,000
1ST YEAR TOTAL COST	\$158,600

Sharing Financial Resources

In the Northwest it typically takes a little longer for church plants to become financially self-sufficient. Although it typically takes three years in the South, it can take four to five years in the Northwest. While that may be the case, we have sensed that in order for a church planting movement to take place, we can't wait five years before we begin to multiply. We are looking for partner churches that will come alongside Pinnacle Church Planting to help us plant churches. A typical covenant relationship would last three

years, after which each partner church could evaluate their interest in a future partnering relationship. Partner church funds would be used to help plant churches by going towards rent of a new facility, part-time/intern staff, and the support of our core programs (evangelism, small groups, and missions). As the giving at each church increases, partner church funds would be directed towards other church planting efforts. A graph showing this process is found below.

Sharing Financial Resources at Church Plants

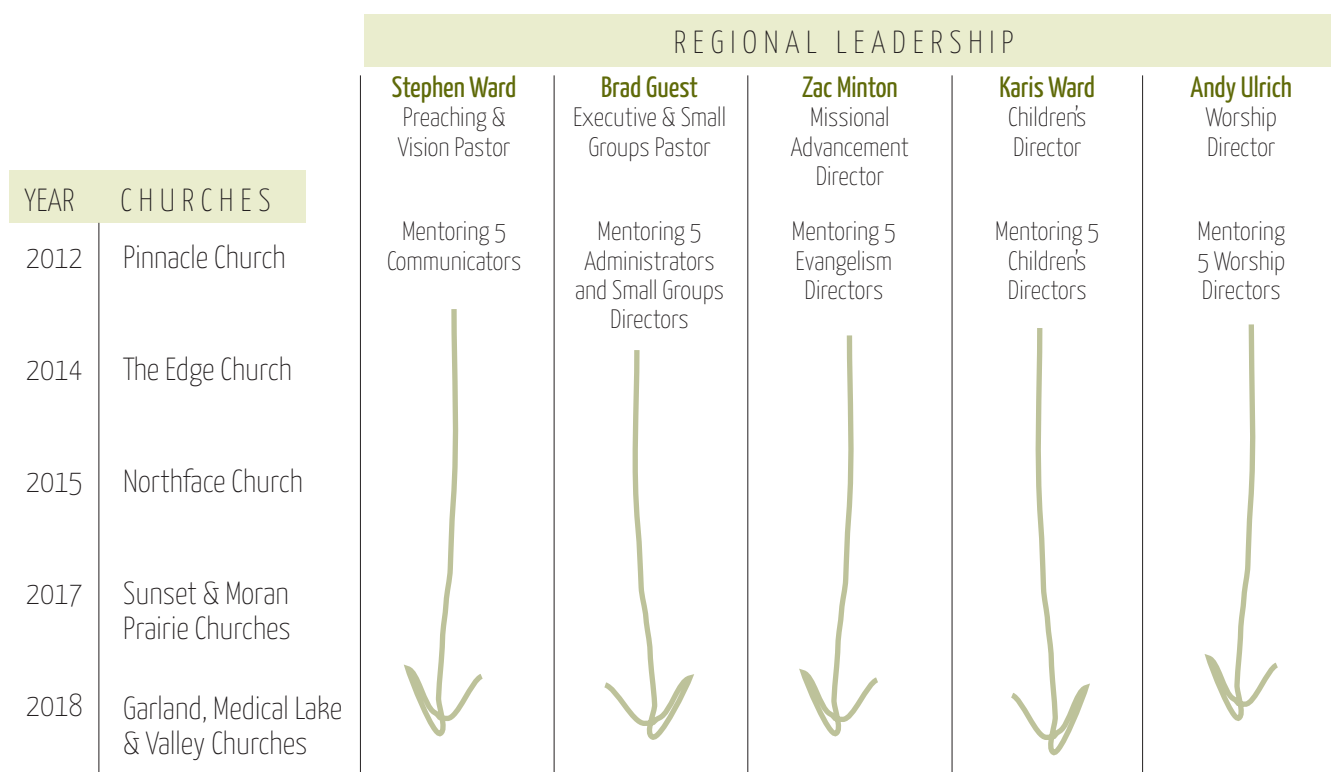
YEAR	CHURCHES	YEAR 1	YEAR 2	YEAR 3		YEAR 4	YEAR 5	YEAR 6	
2012	Pinnacle Church				E V A L U A T E				E V A L U A T E
	PROJECTED CHURCH GIVING	0%	25%	50%		75%	100%	100%	
	PROJECTED PARTNER SUPPORT	100%	75%	50%		25%	-	-	
	ADDITIONAL PARTNER SUPPORT NEEDED	-	-	-		-	-	-	
2014	The Edge Church								
	PROJECTED CHURCH GIVING		0%	25%		50%	75%	100%	
	PROJECTED PARTNER SUPPORT		25%	25%		25%	25%	-	
	ADDITIONAL PARTNER SUPPORT NEEDED		75%	50%		25%	-	-	
2015	Northface Church								
	PROJECTED CHURCH GIVING			0%		25%	50%	75%	
	PROJECTED PARTNER SUPPORT			25%		25%	25%	25%	
	ADDITIONAL PARTNER SUPPORT NEEDED			75%		50%	25%	-	
2017	Sunset & Moran Prairie Churches								
	PROJECTED CHURCH GIVING					0%	25%	50%	
	PROJECTED PARTNER SUPPORT					25%	25%	25%	
	ADDITIONAL PARTNER SUPPORT NEEDED					75%	50%	25%	
2018	Garland, Medical Lake, & Valley Churches								
	PROJECTED CHURCH GIVING						0%	25%	
	PROJECTED PARTNER SUPPORT						25%	25%	
	ADDITIONAL PARTNER SUPPORT NEEDED						75%	50%	
2020	Liberty Lake, International, & Hillyard Churches								
	PROJECTED CHURCH GIVING							0%	
	PROJECTED PARTNER SUPPORT							25%	
	ADDITIONAL PARTNER SUPPORT NEEDED							75%	

Multiplying Leaders

A team of leaders will be used to mentor people in every major system of our church in order to multiply leaders for future church plants. Stephen Ward meets with 5 men each week, mentoring them in how to communicate God's Word. They go through books on preaching and the basics in interpreting Scripture. Over the next year they will be given opportunities to teach through our small group

video curriculum and to preach. Through this process a teaching team is developed by which God can raise up future church planters. Every other major system in our church is being developed in similar ways. Our goal is to equip Christians to carry out the ministry in local churches and help us fulfill our call of planting churches. A simple graph displaying this process can be found below.

Multiplying Leaders through Mentorship



The regional leadership will offer continued mentorship for leaders in their area of ministry to prepare them to lead out at each new church plant.

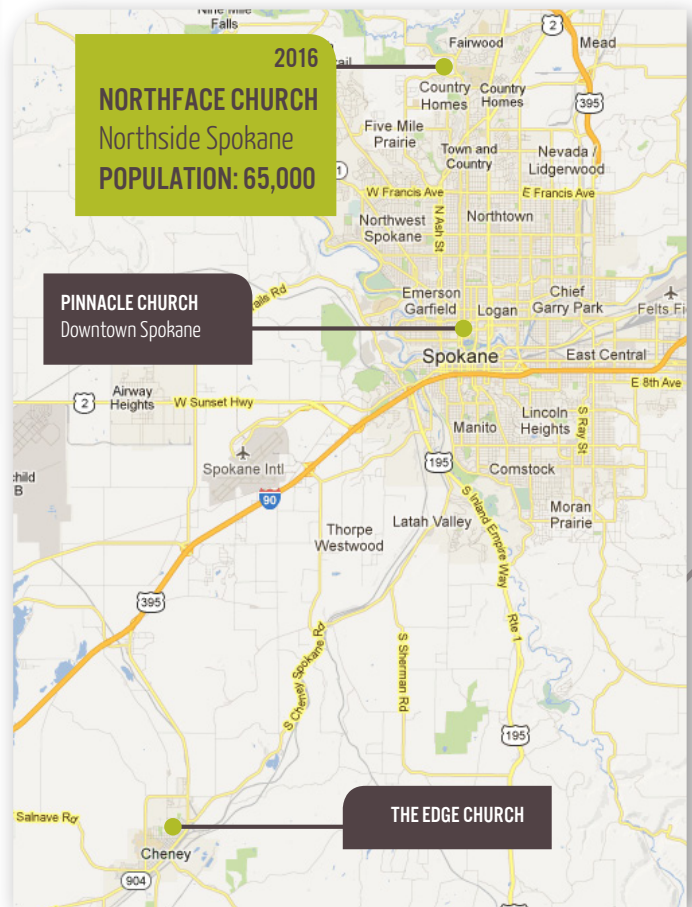
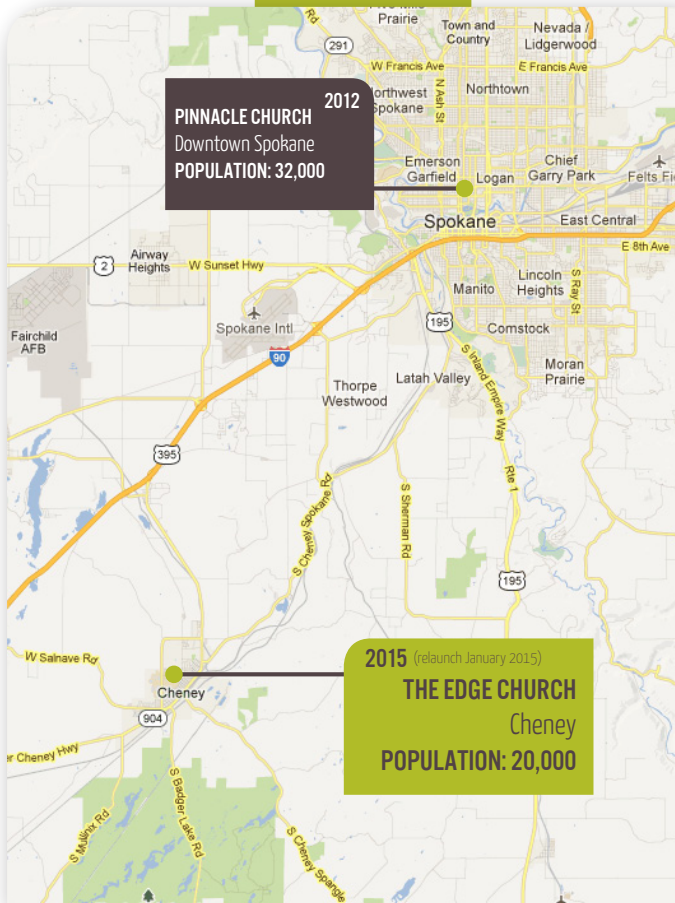
$$5 \times 5 = 25$$

5-Year Plan

2015

START

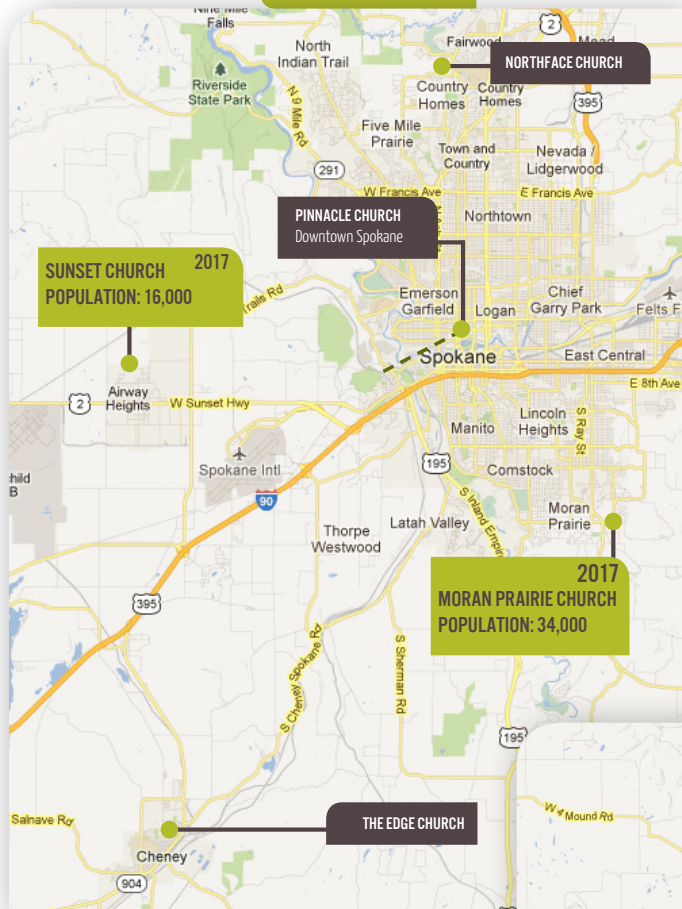
We will have 6 monthly preview services for each new church plant starting on Easter, and the church will officially launch in September. A trailer of equipment will be purchased for each church to help fulfill the vision of sustainable multiplication with rented facilities at each church.



2016

2016

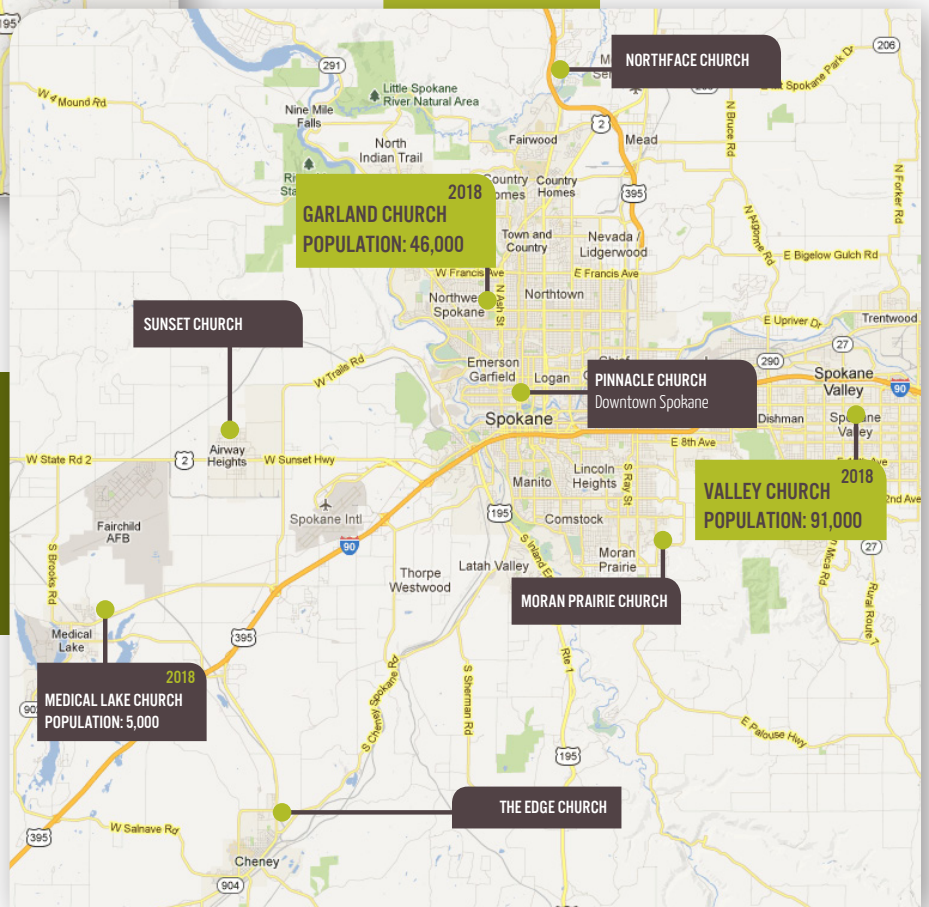
2017



2017

2018

GOAL



In 2019, we will focus on developing our churches and leaders for the health of our churches and for the further multiplication of churches into other areas of the Spokane Metro Area.

2018



Giving

If you would like to partner with us, here are two ways to give:

1. Online @ www.pinnaclechurchplanting.com/#/give
2. By check, payable to **Pinnacle Church** and mail to:

Pinnacle Church
PO Box 30312
Spokane, WA 99223

Contact

Stephen Ward | (509) 995-8010 | stephenward@pinnaclechurch.com | pinnaclechurchplanting.com

PINNACLE CHURCH PLANTING NETWORK
pinnaclechurchplanting.com