

**WELCOME  
TO**

**M1**

*...bringing God & the Bible into everyday life.*

**24**

**JUNE 2018**

Sundays

9:30 &  
11am

Wed.  
7pm

**9:30am**

ESM Youth Grade 6-12 - FH2

LEM Class "Unique" - FH3

**9:30 & 11am**

Worship & Service - Sanctuary

\*Baby Boltz 0-2nd Birthday - Blair Hall

\*Powerhouse MiniChurch - Blair Hall

Short Circuits 2-3 yrs.

Livewires 4-5 yrs.

\*KidzLife 6 yrs.-5th grade - Hughes Hall

**1000 Mcpherson St. Mansfield OH 44903**

**Lead Pastor Thomas Blair**

**Church Office Hours: M-T 9am-3pm**

**Wed. 12-6pm Closed Th-F**

**419.529.6501 ext.200 [www.mansfieldfirst.com](http://www.mansfieldfirst.com)**

*M1 news:*

**Scrooge cast, crew and family Swim Party**

hosted by Pam and Joe Cline.

Yummy Mexican meal - bring your suits & towels! We will deliver the DVD's and celebrate being a part of the Scrooge Family!

**Today After 2nd Service at the Cline's - 1917 Teakwood Dr., Ontario**

**Reminder Legacy 50+ Brunch**

**Monday June 25 10 AM** Golden Corral, Ontario

**Diesel Men's "Friday Night Wrestling" Worship Night**

June 29 6-7:30pm Doors open 6pm; worship led by M1's own Chad Sallee, with a challenge from Pastor Terry Garrett. Come ready to wrestle with God so that He can cause us to walk differently for the rest of our lives!

**The M1 Buddy Team** needs a few more Buddies to complete the program!

Sign up or see Libby in the Office to help with our Special Needs Ministry.

Please note: being a buddy may involve lifting kids or keeping up with very active kids, so it may not be suitable for everyone. **Buddies that have turned in paperwork:** we are scheduling several to start each week; if you haven't been contacted you will be soon! **Watch for details for our July Buddy Meeting.**

**Do you love to pray?** Join with other M1 Prayer Warriors Mondays at 9:30am in the Sanctuary to pray for our church, prayer needs within our church family, the community, and the world today. This time of prayer is open to anyone, enter the new ACC/Blair Hall Doors.

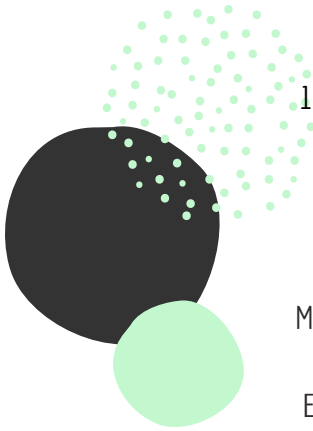
**\*\*\*Monday June 25 meeting 9am to allow for Legacy Brunch at 10am**

**We do not have service on July 4;** we encourage you to check out Ohio Ministry Network Great Family Adventure Camp's amazing services!

You can even register for a week or even a day-

On-Site Daily registration half price after 1pm!

Go to [ohioministry.net/familycamp/](http://ohioministry.net/familycamp/) for info



**Monday 6.25**

9am Prayer Group- Sanctuary

10am Legacy 50+ Brunch-Golden Corral, Ontario

**Wednesday 6.27**

7pm Worship & Service - Sanctuary

**Children's Ministries:**

Sunlight Kids: Infant-3yrs - NEW Nursery

Missionettes: Boys 3yrs to K & Girls 3yrs-grade 5

Royal Rangers: Boys K-grade 5

Encounter Student Ministries: Youth grade 6-12

**Thursday 6.28**

6:30pm Worship Rehearsal - Sanctuary

\*No More Youth Open Gym for summer\*

**Friday 6.29**

6pm Diesel Men's Worship Night - Sanctuary

**Need to know info:**

**First visit?** Go to the Connection Ctr. in the Main Foyer!

The Connection Ctr. is where you sign up for all events; the Connect Wall has all the brochures & flyers for everything at M1.

**Prayer needs, questions/communication for the church office?**

Fill out a Connect Card and place in the offering.

**For Online Giving,** we must set your account up first.

Put your name, phone & email on a giving envelope marked "online set-up" & place in the offering. We will contact you.

email [prayer@mansfieldfirst.com](mailto:prayer@mansfieldfirst.com) for prayer or praise reports!

wifi  MFA ACCESS password: 123456789

Please ONLY bring covered beverages into the Sanctuary!





# Sermon Notes

Dotted lines for writing notes.



## JC ROYAL OPEN - SUNDAY July 15 12:30/Lunch 1:30/Shotgun Start



Brochure/Registration at the Connection Ctr.

Teams Of 4 \$55 per golfer includes:

Player Goody Bags, Cook-out lunch (Hamburgers & Hot Dogs)

18 holes & Golf cart

Every golfer gets a door prize (\$20 & up value)

BBQ Dinner at finish (Chicken, Ribs, Baked potato & Dessert)

### TWIN LAKES GOLF COURSE

2220 Marion Ave Rd., Mansfield

**Own a business?** Advertise it & Sponsor a hole on the course!

Full Sign Color: \$100 Half Sign Color: \$50

Please contact Pam Cline at 419.529.6501 ext. 207

