

God transformed my life, and He used this church to do it.

Four years ago, when I stepped through the doors of **lifechurch**, I was a young, lost, foolish man with an identity crisis who was searching for something solid that I could stand on.



I came to **lifechurch** because my mother invited me. I felt like I owed it to her to at least give it a try. When I came, I kept thinking to myself, "What if these people knew what I was really like?" The truth is, they *did* know what I was really like, and they loved and accepted me as I was. I was blown away by the smiles, happiness, and love I experienced. I was also surprised that this church moved from one school to a bigger one to make room for me. I soon went from young, lost, and foolish to a man grounded in my faith, all because a church called **life** and my mother couldn't stop praying for me.

I have been at **lifechurch** for about four years now, and have established all my best and deepest friendships here. This church also made room for the best gift I have ever received in my entire life: my wife, Kelli. Loving mentors here not only invested in me, they invested in my marriage. Our small group, pre-marriage counseling and mentoring have helped us establish a strong foundation for our marriage.

lifechurch is still investing in my family. One of my cousins has recently started attending. I am praying that several other family members will find Christ here as well. I am here because people made room for me. I hope and pray that we will continue to make room for every person who needs Christ.



lifechurch | An Evangelical Covenant Church

7001 Haggerty Road
Canton, MI, 48187
734.634.2697



WHAT IF GOD OFFERED TO TAKE YOUR LIFE TO THE NEXT LEVEL?



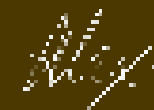
Would you go on the journey? I truly believe we are about to embark on another extremely exciting, and yet faith-building journey as a church. In the seven years since we launched **lifechurch**, God has continually overwhelmed and amazed

me with how He uses us to impact the lives of people throughout our community. He is about to do it again.

You could call it a building campaign, but that would be missing the real heart of it. It's really about people. The building is just a tool to serve people. We want to help people who are far from God to come to know Jesus intimately. We want those who have trusted in Christ to grow deeper in Him, and we want every person to use their gifts to go serve the world.

We are going to the next level as a church, taking the path to rut-free living. This three-year spiritual journey will enable us to experience more of God's power, presence and provision in our lives and through our lives. We believe God is not done working through **lifechurch** to reach others for Christ in the metro area, and around the world. Life change happens here. We are certain God could do more through us than we could ever imagine, but we know we can't do it without prayerfully following God's leading. And we certainly can't do it without you. Are you ready to take your life to the next level?

On the journey with you,



Alex Rahill, Sr. Pastor

Q&A

What is Phase 2? Phase 2 is a 125-foot addition to our current building off of our west wall, doubling our current auditorium and kids' spaces. This was planned since we moved into the current building, but we are starting it earlier than anticipated because we have grown faster than expected.

Why do this now in the current economy?

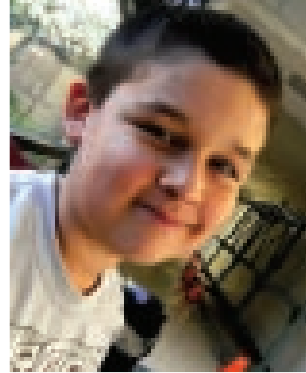
Throughout history, God has chosen to work powerfully in challenging times. In fact, we were preparing to start lifechurch when 9/11 hit and rocked our nation. Despite financial instability and uncertain times, lifechurch became a reality. The timing for bold dreams is rarely ideal, and this will take faith. But we do know that it is a necessary step to respond to the growth that we have experienced.

What if Phase 2 isn't enough? We are praying about what steps to take after Phase 2. As of right now, for any further growth to take place, we will need the adjoining land to the West of our current location. We believe that Phase 2 will give us the base we need to campus and church plant effectively, which we hope to do for our next phase of growth.

How will we afford this addition, as well as the needed staff as we grow? The financial model we have developed anticipates the continued growth in attendance and the operating costs that come with that growth.

As we continue to grow, how do we remain personal and connected? We have found that being connected isn't about size, but intentionality. We need to continue to be intentional about greeting one another, welcoming those who visit, having connection events such as picnics, having connected ministry teams, and most of all connecting in small groups. It is through small groups that we build community, grow in our faith and care for each other when times are tough. If you are not in a small group and would like to be, please contact Ron Wrightson at ron@lifechurchcanton.org

Have more questions? Visit www.L2NL.org.



I chose to be baptized because my life before I knew Christ wasn't so good. I felt unhappy, alone, afraid and unloved. I started coming to lifechurch, and was saved last year at Bair Lake Bible Camp. God has changed my life. I love Him. He is my best friend, my Father and my hero.
~ Kyle Zielonka, 10

STORIES OF LIFE CHANGE

Our family has experienced real spiritual growth and true community since we came to lifechurch. One way we have seen this is in our daughter, Olivia. She was walking through our house singing, "The B-i-b-i-e..." I said, "Honey, what are you singing about?" She said, "Jesus." I realized she was singing "the BIBLE," and I was suddenly struck by how exciting it was to see my daughter growing up and learning about God. I suddenly felt a deep appreciation for all that the lifekids team does every week to help our children learn about Jesus.
~Anton and Tara Botosan (above, with Olivia)



UPCOMING EVENTS:

October 10th: Information Booklets will be distributed after each Sunday Service.

October 17th: Launch of a **new weekly series** and a **new small group series**, too!

November 1st - 7th: Got questions? Get answers. Attend one of the information meetings to be scheduled this week.

November 14th: Commitment Sunday
The opportunity for us to come together and pledge what God has led us to do individually.

December 5th: Announcement Sunday
We will announce campaign totals and celebrate what God has done through us.

PLANS TO GROW:

It's not about getting bigger, it's about doing BETTER ministry. The Phase 2 plans include:

- A 125-foot addition to the current building off of our West wall
- An auditorium that can seat 1,000 people
- Double the space for lifekids ministry
- Double the lobby space
- 70% more space for lifestudents
- A full-court gym for youth and adult activities
- Additional parking
- The capacity to reach more people for Christ
- The space to do a better job at current and future ministry opportunities
- A church plant in Southfield, MI in 2012