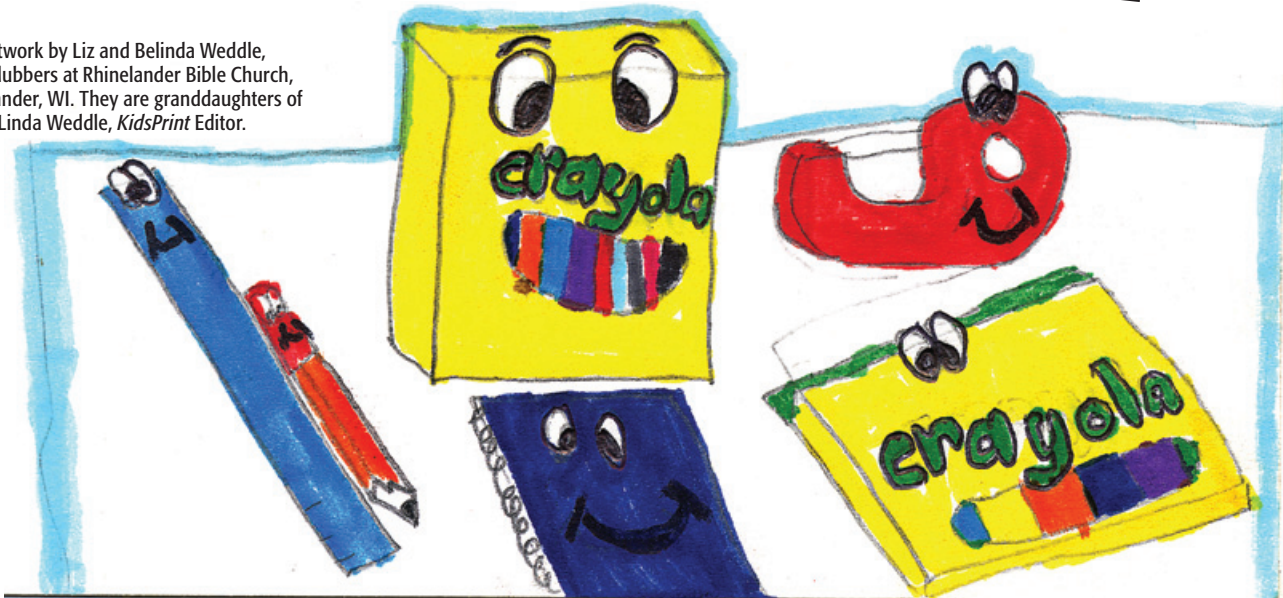


# KidsPrint

Artwork by Liz and Belinda Weddle, T&T Clubbers at Rhinelander Bible Church, Rhinelander, WI. They are granddaughters of Linda Weddle, *KidsPrint* Editor.



## T & T TIPS AND TRIVIA

**A** new school year means new teachers, friends, books, pencils, computers ... and maybe even a new ride on a new bus to a new school. (Or maybe, if you're homeschooled, a new school year means heading to a corner in your basement or dining room.) A new school year also means a new Awana® club year. Here are some ways to make this Awana year the best ever.

**1.** The reason we designed the T&T™ program is so kids like you will learn more about the Lord.

**2.** T&T books each have eight Discoveries or Challenges with seven sections each. Do one Discovery or Challenge a month and you should finish your book. (That's a good way to figure out if you're on track.)

**3.** Streamwood the Dog is named after Streamwood the town (Streamwood, Illinois) where Awana headquarters is located.

**4.** One million children attend Awana in the United States each week. One million more attend clubs around the world in other countries.

**5.** The person who wrote the T&T books and the person who drew the pictures both went to Awana as kids. (Maybe some day you'll be writing or illustrating the books.)

**6.** Art Rorheim, the man who cofounded Awana more than 60 years ago, still comes to work each week.

**7.** Last year, more than 10 thousand kids earned their Timothy Award.

**8.** A Gold Section in the *Ultimate Adventure Book 2* and in the *Ultimate Challenge Book 2* asks for you to send things in to headquarters. The UA book asks you to send a copy of an appreciation letter you wrote your leader. The UC book asks you to send in both a tract (booklet about salvation) you've written and a game you've designed. Every year we receive several hundred of these — not just two or three.

**9.** IF (and that's a BIG IF), you sign your name and clearly write your address on the letter/tract/game you send, you'll hear back from us. If your first and last name isn't included or your writing is so sloppy we can't read it — we will not attempt to send you a letter.

**10.** The code along the top of the pages in the UC books is not difficult, nor is it another language. Just start with the first symbol. (What would be the most obvious letter in a code representing the alphabet?)

## BRAIN DRAIN

**MATCH UP THE FOLLOWING BROTHERS AND SISTERS.**

JOSEPH

MOSES

ABEL

CHILION (KILION)

MARTHA

JACOB

ESAU

REUBEN

PETER

MARY

RACHEL

CAIN

AARON

ANDREW

JAMES

JOHN

MAHLON

LEAH



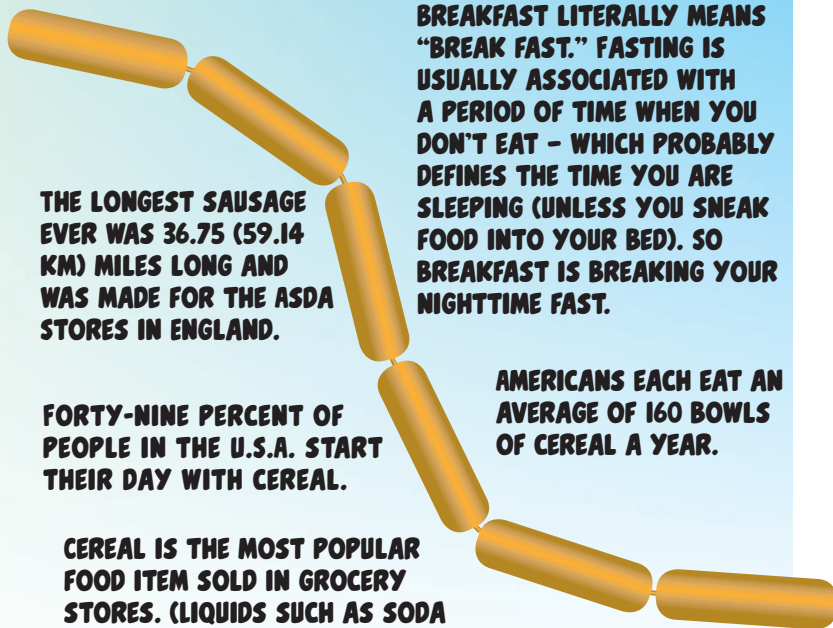
## DID YOU KNOW?

You know how your parents and your teachers say to eat a good breakfast every morning to give you energy for the day? And of course, that's especially true now that school has started and you head off each morning (whether it's to a school building or a desk in your own house) to learn!

So the next time Dad or Mom is telling you to eat a good breakfast, here are some fun facts to share.



**A SAUSAGE MACHINE CAN FILL ONE AND A HALF MILES (2.4 KM) OF SAUSAGES PER HOUR.**



**BREAKFAST LITERALLY MEANS "BREAK FAST." FASTING IS USUALLY ASSOCIATED WITH A PERIOD OF TIME WHEN YOU DON'T EAT - WHICH PROBABLY DEFINES THE TIME YOU ARE SLEEPING (UNLESS YOU SNEAK FOOD INTO YOUR BED). SO BREAKFAST IS BREAKING YOUR NIGHTTIME FAST.**

**THE LONGEST SAUSAGE EVER WAS 36.75 (59.14 KM) MILES LONG AND WAS MADE FOR THE ASDA STORES IN ENGLAND.**

**AMERICANS EACH EAT AN AVERAGE OF 160 BOWLS OF CEREAL A YEAR.**

**FORTY-NINE PERCENT OF PEOPLE IN THE U.S.A. START THEIR DAY WITH CEREAL.**

**CEREAL IS THE MOST POPULAR FOOD ITEM SOLD IN GROCERY STORES. (LIQUIDS SUCH AS SODA AND MILK COME IN HIGHER.)**



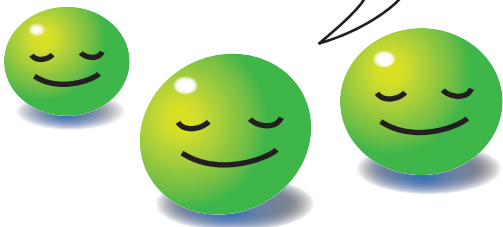
**WONDER® BREAD STARTED SELLING SLICED BREAD IN 1930 - ONE OF THE FIRST COMPANIES TO DO SO. SLICED BREAD WAS ACTUALLY A BIG NEWS EVENT - WHICH IS WHY YOU MIGHT HAVE HEARD THE EXPRESSION "GREATEST THING SINCE SLICED BREAD."**



**WHY WAS THE CLOCK IN THE CAFETERIA ALWAYS SLOW?**  
Every lunch it went back four seconds.

**WHY COULDN'T THE MUSIC TEACHER FIND THE KEYS TO OPEN THE CLASSROOM DOOR?**

They were on the piano.



**WHAT KIND OF VEGETABLE DID THE SCHOOL LIBRARIAN LIKE?**

Quiet peas.

# R&R

**ARE YOU INTO LEGOS?**

Next time you're having difficulty learning a verse or have a long verse to memorize, write each word out on a piece of paper small enough to fit on the

**WHAT DID ONE MATH BOOK SAY TO THE OTHER MATH BOOK?**

We've got problems.

**WHAT DID THE PENCIL SAY TO THE PENCIL SHARPENER?**

Quit going around in circles and get to the point.

## FROM HERE AND THERE



What's so great about living in Georgia? Here's what the clubbers at the First Baptist Church of Leesburg have to say.

- The 3 "p's": peaches, pecans and peanuts (Endreyah — 3rd grade)
- Freedom (Chloe — 3rd grade)
- Being close to the people I know and love (Brittlyn — 4th grade)
- The people around me (Brittney — 5th grade)
- Apple pie (Hannah — 5th grade)
- The animals (Eden — 5th grade)

## WHAT STATE ARE YOU FROM?

We've heard from lots of clubbers from a lot of states telling us what's so great about living where they do — but there's a lot of states we haven't heard from. Here are just four of them: Iowa, Idaho, Illinois, Indiana ... lots more too. If you would like your club to be represented in KidsPrint, write to us at [kidsprint@awana.org](mailto:kidsprint@awana.org). If another church has already written about your state, you can still have your leader email us at [kidsprint@awana.org](mailto:kidsprint@awana.org) and we'll give your church another question to answer.



side of a Lego®. Then mix them up and "build" a tower, using the words in the right order. Do it several times until you have no hesitation saying the verse.

SEPTEMBER



# KidsPrint

2012

CLUB NEWS AND ANNOUNCEMENTS

## CELEBRATE SEPTEMBER!

- National Blueberry Popsicle Month
- National Courtesy Month
- National Piano Month
- 3rd – Skyscraper Day
- 6th – Read a Book Day
- 9th – Teddy Bear Day
- 11th – Make Your Bed Day
- 16th – Mayflower Day
- 26th – Johnny Appleseed Day

SUNDAY	MONDAY	TUESDAY	WEDNESDAY	THURSDAY	FRIDAY	SATURDAY
						1
2	3	4	5	6 	7	8
9 	10	11	12	13	14	15
16	17	18	19	20	21	22
23/ 30	24	25	26	27	28	29