



Grace Early Childhood Center

May 2013

Billing update...

Dear ECC Families,

In January, when we published our 2013/2014 tuition schedule, it was our intent to change the childcare software we use to support the Early Childhood Center. We have decided not to make the change from our current program at this time. Therefore, we will be billing all programs on a monthly basis for the 2013/2014 school year. The revised tuition schedule is as follows:

Grace Early Childhood Center

Inside this issue:

Contact Info.	2
Upcoming Events	2
Enrollment News for Next Year.	2
Thank You Preschool Grandparents!	2

INFANTS		TODDLERS		FULL DAY PS	
51 Weekly Payments	12 Monthly Payments	51 Weekly Payments	12 Monthly Payments	51 Weekly Payments	12 Monthly Payments
130	552	117	497	107	455
195	829	176	748	160	680
260	1105	234	995	214	909

Tuition will be due the first of the month and will be considered past due after the fifteenth of the month. Accounts not paid in full by the fifteenth of the month will be assessed a \$25 late fee.

Payments may be dropped off at the ECC office or mailed to Grace Polaris Church at the address on the top of your statement.

We also offer the option to pay by credit card or echeck via renweb.com

or by an automatic withdrawal from your checking account on the second business day of the month.

Please contact Joyce at 614-410-4232 or joyce.albaugh@gracepolaris.org if you have questions about your payment options.

Special points of interest:

- * The last day of school for the half day preschool program is Thursday or Friday, May 23 or 24.
- * Center closed May 27, 28, 29 for Memorial day and Teacher Conference

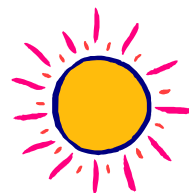
Preschool Music and Art Show

Thank you for coming to the Preschool Art and Music Show. The kids did a wonderful job. We saw a lot of Grandparents also and were so glad they could come to this special event. A special "Thank you" to our music teacher Mindy Barlow for working with the kids all year and putting together such a special program. The Dvd's we recorded will be available soon.



Summer Withdrawals for Full Day Students

If your child is enrolled in our Full Day preschool program and you plan to withdraw him/her for the summer, please stop by the office to fill out withdrawal paperwork.



Grace Early Childhood Center

Grace Brethren Church of Columbus
8225 Worthington-Galena Road
Westerville, OH 43081

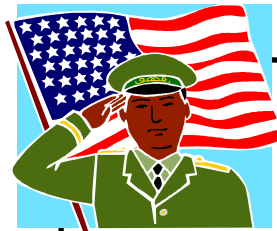
Phone: 614-431-8228

Fax: 614-431-8206

E-mail: john.teevan@gracepolaris.org

We're on the Web!

www.grace-ecc.com



Upcoming Events

MAY

18- Grace Golf Outing
at Glenross Golf Club

23/24- Last days of half day PS program

27-29- CENTER CLOSED-Memorial Day
and Teacher Training days

Have a wonderful summer!



Enrollment Information for Next School Year

We are busy working on enrollment for next year! Please visit our website, (www.grace-ecc.com) for the updates to our school calendar, your child's supply list, and medical form (if needed) and "Meet the Teacher" dates. We will update this site regularly throughout the summer. Plan to stop by the ECC anytime August 5-23 to find out which class your child is in and who their teacher will be. At this time you will also receive all the information about the school year; including school calendar, supply list, and teacher letter. All incomplete paperwork and/or outstanding fees will need to be taken care of at that time as well. We are looking forward to a great year ahead and feel blessed to be a part of your child's education.

Thank you Preschool Grandparents and Special Guests!



We would like to extend a BIG thank you to all the grandparents that came to Grandparent's Day. We truly enjoyed getting to know your parents and we hope your child enjoyed "showing off" his/her grandparents.