

# NEXT LEVEL TRAINING



## On-site Training...

brings experienced presenters to local church settings where church leaders gain an understanding of where the church is now so that steps can be taken to move toward the next level. This on-site training addresses

1. Intercessory prayer
2. Falling in love with the church
3. Mission, vision, and values
4. Church health
5. Church life cycles
6. Growth barriers
7. Leading change
8. Best practices in vital areas of church life

On-site training sets the stage for developing a Ministry Action Plan (MAP) that will guide the church toward its next level.

*Equipping churches for ministry in the 21st century through*

- *On-site training*
- *Regional coaching*
- *National networking*

## Regional Coaching...

brings local participants into an accountability relationship with a pastor/leader who has experienced leading a church to its next level.



Coaching networks are facilitated by Congregational Ministries, but

coaching relationships are determined by the participant and the available coach. Most coaches prefer a simple coaching agreement that helps define expectations and projected outcomes. Most coaching agreements are designed to last for one year. Fee schedules for coaching services are developed by the individual coaches.

## National Networking...

provides connections with pastors and church leaders across the nation who are leading their churches to the next level. Often informal, but always informative, these networks allow next level leaders to learn from one another about best practices in other next level churches.

## Why Next Level?

Because every church must continually search for more effective means of ministry, General Baptist Congregational Ministries has developed a unique training workshop to take any church to its next level.

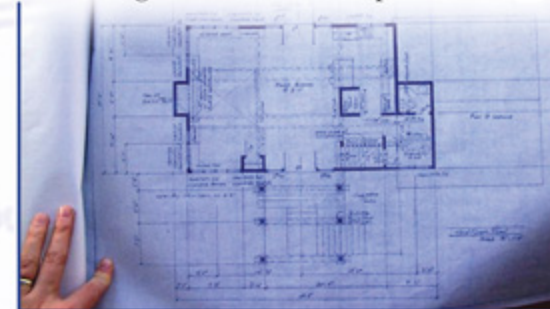
Building on the foundational ministries a church has in place, Next Level Training provides the tools needed to fine tune the church's ministry toward its next level.

## What Is My Investment?

Among General Baptists, *Next Level Training* is made available for the cost of printed materials (\$25) plus any direct on-site costs (meals and snacks) and the cost of resources given to participants.

## Who Should Attend Next Level Training?

Whether you are in a young church or one that has a long history, church leaders who are interested in leading a local church from where it is to its next level will benefit from this training. Next Level Training will give you the knowledge, skill, and confidence you need for your church's growth and development.



# NEXT LEVEL TRAINING



*It takes all kinds of churches to reach all kinds of people.*

*The Lord has crafted each church to serve a certain purpose and to reach a particular group of people.*

*Each church has the potential to be and become all that the Lord intends.*

*Next Level Training intends to help each participating church not only to discover where it is but also to discover where the Lord wants it to be.*



Next Level Training can be presented in segments over a several-month period. This

allows church leaders to work through and begin to implement plans a step at a time. This format lends itself to a series of evening presentations with follow-up sessions conducted by the local church leaders.

Next Level Training can also be presented in a format that spans two evenings and one day. This generally allows for a Thursday and Friday evening followed by a 9 a.m. - 3 p.m. Saturday schedule.



# NEXT LEVEL TRAINING



**GENERAL BAPTIST  
CONGREGATIONAL  
MINISTRIES  
PRESENTS**

**EQUIPPING CHURCHES  
FOR MINISTRY  
IN THE  
21ST CENTURY**

**WWW.GENERALBAPTIST.COM/NEXTLEVEL  
CONGREGATIONAL MINISTRIES  
100 STINSON DRIVE  
POPLAR BLUFF, MO 63901  
573.785.7746**

Non-Profit Org.  
U.S. Postage  
PAID  
Permit No. 164  
Poplar Bluff, MO

**E-MAIL: CONGREGATIONAL@GENERALBAPTIST.COM**