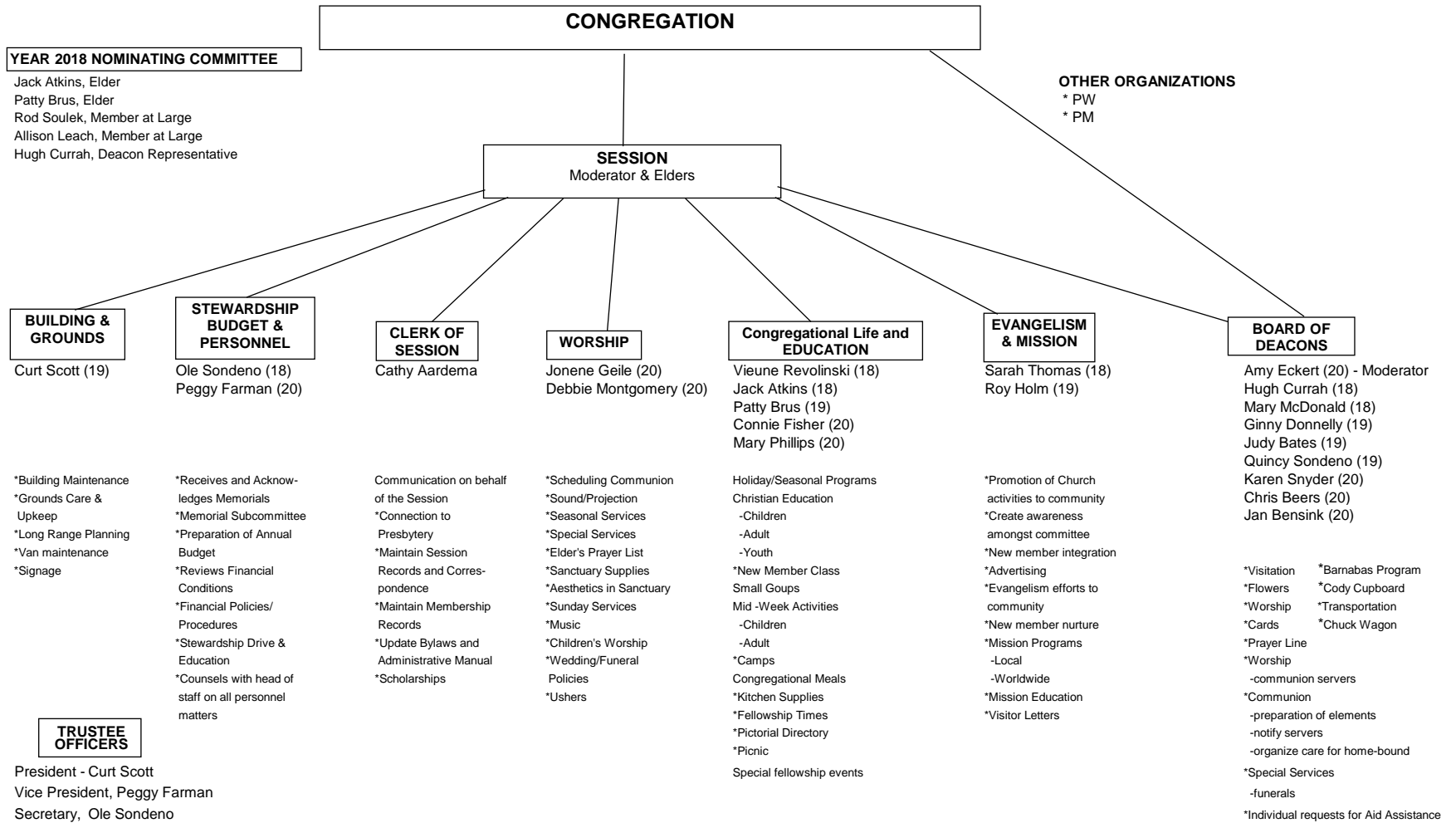


ORGANIZATIONAL CHART 2018



YEAR 2018 NOMINATING COMMITTEE
 Jack Atkins, Elder
 Patty Brus, Elder
 Rod Soulek, Member at Large
 Allison Leach, Member at Large
 Hugh Currah, Deacon Representative

OTHER ORGANIZATIONS
 * PW
 * PM

BUILDING & GROUNDS
 Curt Scott (19)

*Building Maintenance
 *Grounds Care & Upkeep
 *Long Range Planning
 *Van maintenance
 *Signage

STEWARDSHIP BUDGET & PERSONNEL
 Ole Sondeno (18)
 Peggy Farman (20)

*Receives and Acknowledges Memorials
 *Memorial Subcommittee
 *Preparation of Annual Budget
 *Reviews Financial Conditions
 *Financial Policies/Procedures
 *Stewardship Drive & Education
 *Counsels with head of staff on all personnel matters

CLERK OF SESSION
 Cathy Aardema

Communication on behalf of the Session
 *Connection to Presbytery
 *Maintain Session Records and Correspondence
 *Maintain Membership Records
 *Update Bylaws and Administrative Manual
 *Scholarships

WORSHIP
 Jonene Geile (20)
 Debbie Montgomery (20)

*Scheduling Communion
 *Sound/Projection
 *Seasonal Services
 *Special Services
 *Elder's Prayer List
 *Sanctuary Supplies
 *Aesthetics in Sanctuary
 *Sunday Services
 *Music
 *Children's Worship
 *Wedding/Funeral Policies
 *Ushers

Congregational Life and EDUCATION
 Vieune Revolinski (18)
 Jack Atkins (18)
 Patty Brus (19)
 Connie Fisher (20)
 Mary Phillips (20)

Holiday/Seasonal Programs
 Christian Education
 -Children
 -Adult
 -Youth
 *New Member Class
 Small Goups
 Mid-Week Activities
 -Children
 -Adult
 *Camps
 Congregational Meals
 *Kitchen Supplies
 *Fellowship Times
 *Pictorial Directory
 *Picnic
 Special fellowship events

EVANGELISM & MISSION
 Sarah Thomas (18)
 Roy Holm (19)

*Promotion of Church activities to community
 *Create awareness amongst committee
 *New member integration
 *Advertising
 *Evangelism efforts to community
 *New member nurture
 *Mission Programs
 -Local
 -Worldwide
 *Mission Education
 *Visitor Letters

BOARD OF DEACONS

Amy Eckert (20) - Moderator
 Hugh Currah (18)
 Mary McDonald (18)
 Ginny Donnelly (19)
 Judy Bates (19)
 Quincy Sondeno (19)
 Karen Snyder (20)
 Chris Beers (20)
 Jan Bensink (20)

*Visitation
 *Flowers
 *Worship
 *Cards
 *Prayer Line
 *Worship
 -communion servers
 *Communion
 -preparation of elements
 -notify servers
 -organize care for home-bound
 *Special Services
 -funerals
 *Individual requests for Aid Assistance

*Barnabas Program
 *Cody Cupboard
 *Transportation
 *Chuck Wagon

TRUSTEE OFFICERS

President - Curt Scott
 Vice President, Peggy Farman
 Secretary, Ole Sondeno