

The News

First Presbyterian Church, Salina, KS



November 1, 2009 Let the 150 Year Celebration Begin!

(see inside for details)



Drawing by Jerry Exline

Sympathy is Extended to

Willow Leenders and Phil Weaver, Josh, Kevin, and Zack on the death of Phil's brother, Chuck Weaver of Arizona, Phil's father, James Weaver of Texas and Willow's mother, Mary Lou Leenders of Connecticut.

Chandra and Jeff Cooper, Teresa and Avery on the death of Chandra's grandmother, Mabel Mills of Salina, on October 7.

A Million Thanks!

to Manor Bus Drivers

**Jerry Exline
Jimmie Lewis
Bob Salem
Pat Taylor**

for driving Manor residents to FPC for Sunday services during the month of September!

Thank You!

Dear First Presbyterian Church, I recently received a Recognition Pin from Rotary International for my volunteer service in Honduras at Fellow Man International. While the pin is small, to me, the recognition is large. Much of the work I have done in Honduras has been in conjunction with help from the First Presbyterian Church. Of course, many of the members have done a lot of additional work that I have not been involved in. However, I would like for all of the members of the church to feel they are included in this recognition. So please accept my appreciation to the members of the congregation.

CHARLEY WEATHERS
(hear more about
Fellow Man International
inside the newsletter!)

FPC Staff

Tom Reid & Andy Davis
Pastors

Becky Ewing
Director of Congregational Care
and Mission

Sally Roth
Director of Administration
and Communication

Mary Andersen
Volunteer Assistant

Melanie Pearson
Administrative Assistant

Deb Shetlar
Director of Christian Education

Willow Leenders
Youth Coordinator

Katy England
4th/5th Fellowship Coordinator

Patty Mansfield
Midweek & Nursery Coordinator

Richard Koshgarian
Director of Music

Angie Koshgarian
Organist

Ed Zoch
Daytime Custodian

Jay Durham
Relief Custodian

Congratulations!

Chris Herwig and Stacy Jasperson were married September 26 in the sanctuary. **Tere Herwig** is Chris' mother and **Ann Nordboe** is his grandmother.

A daughter, Olivia Reece Hardy, was born October 10 to Stephen Hardy & Katie Ryan of Kansas City. Olivia's grandparents are **Saralyn & Randy Hardy**.

A daughter, Hallie Newman, was born August 13 to Dave & Tracy Newman of Allen, TX. Hallie's grandparents are **Betty & John Schmidt**.

Wedding Anniversaries

Harold and Ruth Lamfers will celebrate *58 years of marriage on November 27.*

Happy Birthday!

Wilbert Freeman will celebrate his *94th birthday on Nov. 3.*

John Ramsey will celebrate his *98th birthday on Nov. 4.*

Gladys Chapman will celebrate her *92nd birthday on Nov. 17.*

**Senior Singles
(Guests Welcome!)**

*There will be no meeting
in November!*

Saturday, December 12

Sunrise Church, 6:00 pm

Brisket Dinner \$9.00, Please bring an item or two for the Food Bank plus a wrapped kitchen item worth about \$2.

**RSVP by December 8
to Jean Burch (827-2878)**



FIRST PRESBYTERIAN CHURCH

Resurrecting the Daring Adventure!

1860-2010



SUNDAY, NOVEMBER 1, 2009

Come to worship for All Saint's Day and the kick-off of our birthday celebration.

FPC's 50 year member "saints" will be recognized and following worship, we will gather in Blair Hall for an **exceptional** coffee hour that will include:

light refreshments, Jan Carr's film showing how our church began, and the premier of Sydney Soderberg's DVD collection of pictures she has taken over many years of congregational activities.

Don't miss this opportunity to take a look back into the vibrant history of First Presbyterian Church!

Food Drive to Benefit the Emergency Aid Food Bank Began Sunday, October 18



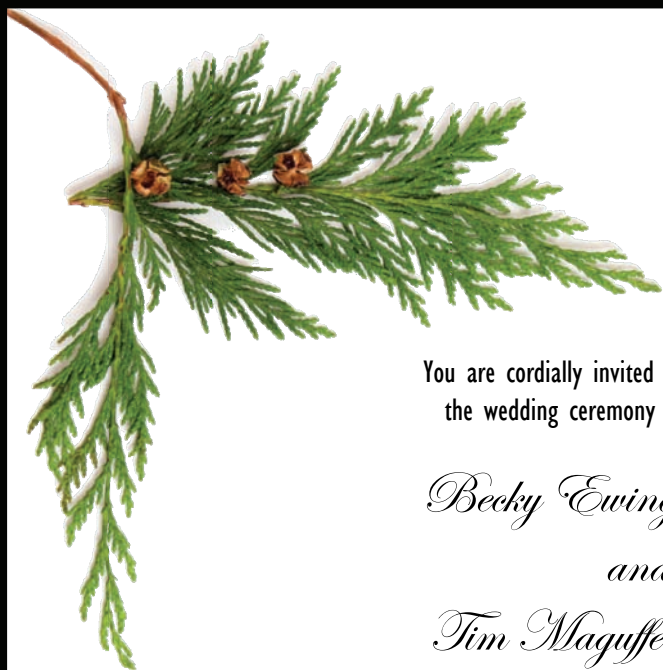
On Sunday Oct. 25, the 4th/5th Fellowship will hand out paper bags with a list of items needed by the Emergency Aid Food Bank. **Fill the bag & return it to the church by Sunday, November 1.** On November 4, the FPC youth groups will load & deliver the groceries to the food bank. Also, as a part of their mission efforts, the youth will stock the donated items in the food bank warehouse.

The Food Bank will accept any donation of cash, food or personal care items. Items requested are stuffing, cranberry sauce, pumpkin, canned vegetables (no green beans or corn), Jello and Jello pudding, french fried onions, cream of mushroom soup, elbow macaroni, coffee/tea, hand soap, shampoo, conditioner, and toilet paper.

Thank You...

This is a very long overdue thank you to all the wonderful women at FPC who brought our family meals during the last few months. What a blessing to have those nights with one less worry! All of the prayer cards have also been appreciated by our family.

Greg & Ginger Senseman



You are cordially invited to
the wedding ceremony of

Becky Ewing

and

Tim Maguffee

Friday, the Eighteenth of December
Two Thousand and Nine
Seven o'clock in the evening

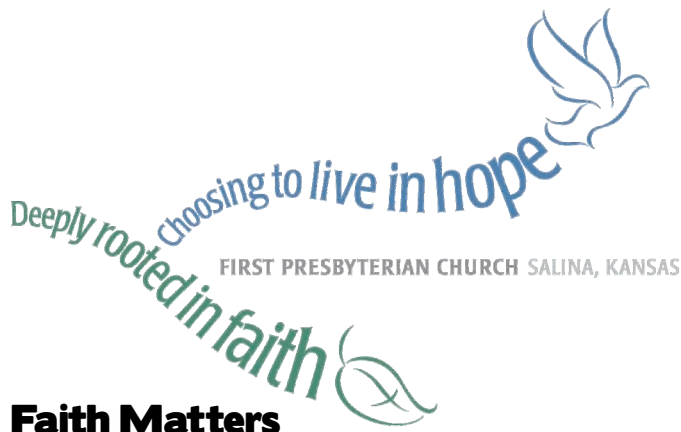
First Presbyterian Church
308 South Eighth Street
Salina, Kansas

The only gift we request is your presence.

FPC at CROP Walk 2009



Thank you to Monte White for the wonderful photographs!



Faith Matters

by Andy Davis

Our Session recently approved a new vision statement for this congregation. Faith Matters will take a careful look at this statement, section by section, for the next five Sundays.

Line-up :

Sunday, November 1:

EXPECT - Martha Rhea

We believe we are called to grow in our expectation of God acting in our lives. God is faithful, and daily, we will look for the presence of God.

Sunday, November 8:

TEACH - Randy Hardy

We believe we are called to teach each person, from the youngest to the oldest, a core theology based on a Reformed understanding of what is essential to the Christian faith.

Sunday, November 15:

GROW - Sydney Soderberg

We believe we are called to be a church that is authentic and passionate about a life of faith - to be a church where every person takes his or her spiritual life seriously.

(no class on Sunday, November 22)

Sunday, November 29:

LOVE - Melinda Jett

We believe we are called to be in relationship with each other. We will come to worship not just for ourselves, but also for others. We are a community, based on faith, and we need each other.

Sunday, December 6:

SERVE - Pat Putzier

We believe we are called to grow in our commitment to justice, compassion and love, Jesus came to serve, not to be served. In the same way, we will look outward, not always expecting our needs to be met, but to learn more about the needs of others and offer help and hope to the world.

Thank you to the Trustees & Davidson Tree Farm for the newest addition *(of the arboreal variety)* to FPC!



Way to be **GREEN!**

Looking Ahead @ Christian Ed:

COMING UP: SUNDAYS

MULTI-AGE CHURCH SCHOOL

All Kindergarten - 8th graders are welcome to come to the Third Floor Youth Room and join in a Faith Connection!

“REEL” FAITH

Youth grades 6-12 are invited to join this class where popular movie clips are shown to encourage conversation about faith and theology .9:00 a.m. in the Downstairs Parlor
Would you like to lead a class? Contact Deb Shetlar at 825-0226 or deb@fpcsalina.org

Thanks to these awesome volunteers who led Reel Faith in September and October!

Melinda Jett
Bill & Dana Kossow
JR Lidgett
Todd Michealis

SUNDAY ENRICHMENT

All Kindergarten–3rd graders are welcome to join in Bible Study and crafts immediately following Children’s Time during worship. Located in the Third Floor Opening Exercise Room. Please see the calendar for select dates.

Would you like to lead a class? Contact Deb Shetlar at 825-0226 or deb@fpcsalina.org

Thanks to these spectacular volunteers who helped with Enrichment classes in October!

Leslie Bishop
Tricia Cobb

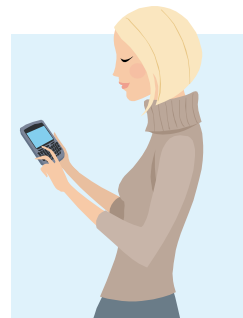
COMING UP: WEDNESDAYS

November 4: Review Games:
Invite a Friend!

November 11: Isaiah’s Message
(FSB p. 138)

November 18: Servant Leader
(FSB, p. 139)

**No Wednesday Programs on
November 25.
Happy Thanksgiving!**



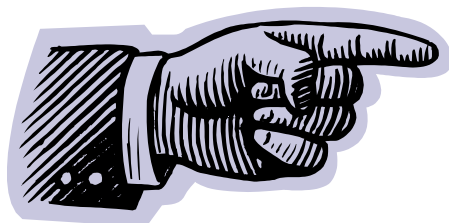
**Check out the new bulletin
boards outside the
Christian Education
offices for more CE news!**

**Can't remember when you're bringing snacks to Wednesday Programs?
Want to learn more about volunteering?
Have a question about the calendar and you've lost your newsletter?**

Check out our new website! You'll find the answers to these questions and more!

www.fpcsalina.org

Same address...different look.



Mark Your Calendars!
Things coming up for
FPC YOUTH GROUP...



PNK Fall Youth Rally
October 24th and 25th from noon on
Saturday until 11:30 on Sunday

- Who: All PNK Junior and Senior High Youth Grades 6 – 12
What: Keynote messages, singing, music, arts, crafts, games, small groups and small group games, dinner, vespers, dancing, sleeping, breakfast, and Sunday worship
When: From Noon on Saturday, October 24 to 11:30 am on Sunday, October 25
Where: First Presbyterian Church, Abilene, Kansas
Bring: A change of clothes, masquerade clothes for the evening party, sleeping bag, pillow, inflatable mattress, toiletries, a Bible

Follow this link <http://www.pnks.org/pOtherDocumentsWordpdfclick.aspx?ID=145> to download a registration form and bring the form plus the \$45 registration fee to the rally with you!

Wednesday, October 28th

- 5:30 pm – W.O.W. service in the chapel
6:00 pm – meal upstairs in the youth room
7:30 pm – time to go home

Wednesday, November 4th

Emergency Aid Food Bank youth service project

- 5:30 pm – W.O.W. service in the chapel
6:00 pm – meal upstairs in the youth room
6:20 pm – load vehicles with donated food and go to Food Bank to unload, organize and shelf the food
7:30 pm – pick up youth at the Food Bank, 255 South Chicago

Wednesday, November, 11th

- 5:30 pm – W.O.W. service in the chapel
6:00 pm – meal with a theme (probably Chinese) in Blair Hall
7:30 pm – time to go home

Wednesday, November 18th

- 5:30 pm – W.O.W. service in the chapel
6:00 pm – meal upstairs in the youth room
7:30 pm – time to go home

No Youth Group On November 25, Happy Thanksgiving!

Thank You...A very deep heartfelt gratitude to the youth group and their families for the huge and wonderful outpouring of prayer and cards and warm thoughts during this time of loss with my family. I absolutely felt buoyed in love, and in the moments when I felt overwhelmed by grief, it was your prayers that got me through. There is a beauty in grief and I was able to touch that with the support of your love.

Many thanks to the staff for filling in the gaps during my absence and for Dana Kossow and other parents who created a most amazing Hawaiian luau celebration for the youth. I am sorry that I missed the block party and the luau, but of course, there's more fun to come!

Again, thank you so much! Willow

“For the Lord will not reject forever. Although he causes grief, he will have compassion according to the abundance of his steadfast love; for he does not willingly afflict or grieve anyone.”

Lamentations 3:31-33

*Thanks to the wonderful
volunteers who hosted an awesome
Hawaiian Luau for the Mid and
Senior High Youth Groups!*



Check out more pictures from the incredible Mid and Senior High Luau on FPC's Flickr page!! www.flickr.com/photos/fpcsalina

Welcome

these new members!



Stephanie Ames was received into FPC membership on October 18. Stephanie is a para educator at Sunset Elementary School. She has facilitated the Divorce Support Group sponsored by FPC since 2005. Stephanie has one son, Ryan, who lives in Chicago. She enjoys photography, antiques, spending time with friends and visiting her son. Please extend a warm welcome to Stephanie!

Christopher and Abbey Rupe were received into FPC membership on October 18. They are parents of **Katelyn**, age 2 1/2, and **Colin**, 10 months. The Rupes, along with their children, moved to Salina in June. Chris is a General Surgeon with Mowery Clinic and Abbey is a Pediatrician with Salina Pediatric Care. In their free time, they enjoy spending time with family and cheering on the Jayhawks. Please extend a warm welcome to the Rupe family!



Jennifer Landes was received into FPC membership on October 18. Jennifer lived in Salina until she left for Topeka, KS for college. After graduating, she served in the Peace Corps twice, then returned to teach in Hays. She is the daughter of FPC members Jack and Patty Landes. Please extend a warm welcome to Jennifer!

Neighborhood Block Party!

On Wednesday, September 30, FPC and St. John's Lutheran once again invited members, friends, and neighbors to meet on 8th Street for a block party. Two-hundred and eighty people ate hot dogs, baked beans, chips, and cookies. A communion worship service followed the meal and \$323.00 was collected during the special offering. The offering will benefit our neighbors to the north, Pioneer Presidents Place, a low income housing area in need of an emergency fund to assist residents in time of crisis.

Thanks to the many volunteers from both churches who made the Block Party such a success!



Thank You so much for your kindness and thoughtfulness. The money collected is quite overwhelming and greatly appreciated. It will go for good causes.

God Bless!

From the staff and residents of Pioneer Presidents Place



Thank you to Ed Zoch for the great Block Party photos-see more at FPC's Flickr page! <http://www.flickr.com/photos/fpcsalina/>

Grace & Gratitude

FIRST PRESBYTERIAN CHURCH 2010 STEWARDSHIP CAMPAIGN



The Budget Committee will begin to meet in early November, and in order for them to be able to complete their work, they need the most accurate figures to prepare the 2010 budget.

That is why it is so important we have all pledge cards returned by Sunday, November 1! As of today, 192 pledge cards have been returned for a total pledged amount of \$549,664!

Have you lost your card, do you have a question? Don't hesitate to call Sally in the church office at 825-0226! **Your pledge, no matter the amount, IS IMPORTANT!**

EACH AND EVERY PLEDGE COUNTS!

First Presbyterian Church



From Honduras With Love

September 17, 2009

Dear Friends of First Presbyterian Church,

It is with tremendous gratitude in my heart that I write to you today. I want to tell you how much your continued moral, financial and prayer support of Fellow Man International of Honduras has meant to me. Your congregation's generous financial contributions have been so very important to the impoverished people of Honduras whom the mission serves.

This year has been very difficult for Honduras. With more than 80 percent of Honduran exports bound for the United States, the economic crisis of our country has profoundly affected this country. To make matters worse, Honduras, as many of you know, is currently suffering a political crisis which has brought about suspensions of international aid and economic sanctions. It is heartbreaking to watch Honduran politicians shake their fists at one another over political ideologies. They claim it is all in the name of the defense of democracy and how to best solve the pressing socioeconomic problems facing this country however, the evidence would suggest it has more to do with personal agendas and the pursuit of recognition, power and individual wealth. Meanwhile, the clamor of the poor for even the most basic of human needs such as food, housing, education and healthcare go largely unnoticed.

My heart has ached as I have watched the very people we are trying to help, slip into an even more abject poverty, devoid of human dignity, all because of so many factors well beyond their control. I have secretly wondered about the wisdom of managing a project whose need is insatiable and whose possibility for self-sufficiency remote. And yet, there is something miraculous about the message of the hope, faith and love that Christ offers. He said the poor would always be with us and yet at the same time implored each and every one of us to respond with compassion to those who are in need. What a privilege and a blessing it is to serve God by sharing Jesus' message in such a real and meaningful way. Thanks to you, hope, faith and love are not just intangible concepts far from the reality of the poor's misery, they are spiritual gifts freely given through works and available to all who would find their way to our door.

Every day, little miracles occur at our project. I wish so very much you could be there when the single mother smiles because her child has received the medical treatment he or she needs to become well. I would have you visit our employee's homes to see the awesome difference a living wage can make not only in their lives, but also in the lives of their extended families. I so desire to share the tight hugs the village children give me as I step out of the mission's truck every morning. Their joy has become my joy. What a blessing!

Lisa Armstrong
Barrio Las Colinas
Pinalejo, Quimistan
Santa Barbara, Honduras
Central America

Phone: 011-504-625-2503
E-mail: lfshdoyou@yahoo.com
www.fellowmaninternational.org
www.fmlta.blogspot.com

On behalf of the people who have been so profoundly touched by your gifts, I would above all like to express my undying gratitude to the congregation of First Presbyterian Church and the mission committee. I know that supporting ongoing operating expenses is not nearly as concrete as the construction of a building or the funding of a designated project. However, for the child with severe malnutrition, the father with tuberculosis or the mother in labor, your financial support has saved their lives. Thank you so much for remembering the least of these, God's children of Honduras. *Lisa Armstrong*

Thank You...

Thank you for your recent gift of \$5,690.00 to Fellow Man International Foundation. Your church's past and present gifts form a significant part of FMI's support. Lisa Armstrong's efforts in providing medical, nutritional and health support continue to expand. Recent efforts include economic development for the area around Buenos Aires. Your close connection with the Foundation and its mission helps maintain the service of compassion and its many expressions for the poor mountain people of Honduras. Thank you!

Marshall Stanton, President Fellow Man International Foundation

NOVEMBER

happy birthdays

1 Melinda Hoffman
 2 Carrie Carpenter
 3 Wilbert Freeman
 4 Jim Berglund
 4 Kevrick Cox
 4 Sarah Morris
 4 Will Putzier
 4 John Ramsey
 5 Lil Mowery
 5 Dustin Stovall
 6 Marlana Hogarty
 6 Jordan Murphy
 6 Alex Wyatt
 7 Adele Britegam
 7 Addison Justus
 7 James Patterson

8 John Shetlar
 8 Katie Stephenson
 8 Stephanie Weckel
 9 Tom Jett
 9 Kristen Murphy
 9 Ginger Reid
 10 Nancy Linville
 11 Rosalie Short
 12 Jack Beverly
 12 Rachael Hough
 13 Gavin Prester
 13 Scott Taggart
 14 Peggy Medina
 15 Terry Bakker
 15 Chandra Cooper
 15 Jeff Cooper

15 Max Griffin
 15 Bret Wallace
 17 Gladys Chapman
 17 John Hogarty
 18 Colby Hanzlicek
 19 Linda Salem
 20 Maryellen Batt
 20 Judy Edmands
 20 Ivy Marsh
 21 Lucas Allen
 21 Courtney Kauer
 22 Billielo Baringer
 22 Haley Mansfield
 22 Sandie Montre
 23 Zebulon Davis
 23 Anne Hayes

23 William Hayes
 23 Katina Styles
 24 Barbara Scherer
 24 Kristy Yenkey
 25 A. Jay Andersen
 25 Zachary Bass
 25 Tom Gates
 25 Duane Keast
 25 Thatcher Keast
 26 Cyndy Knutson
 27 Connie Neuburger
 28 George Johnson
 29 Ann Coddington
 29 Molly Michaelis
 29 Karol Mobley
 29 Lauren Woods

ROMANS IN TEN WEEKS

Bible Study

Paul's letter to the Romans is the pinnacle of his writing. His letter is at times passionate, at other times involved, but always relevant to Christian life today. It is foundational to Presbyterian theology.

The half-hour study begins at 11:30 am following worship and runs every Sunday through December 6 (except for Sunday, November 29 for the Thanksgiving weekend). We will meet in the First Floor Conference Room. The nursery will be available.

If you need a book, please contact Associate Pastor, Andy Davis.



Now's your chance!

Don't miss out on this opportunity to update your photo (or get one for the first time!) for the new church directory!

- *Do you see people in church and wonder what their names are?*
- *Are you new to our church and wish you had something to help you put names with faces?*
- *Do you sometimes wonder who is on the church staff?*

If your answers are "YES! YES! YES!," then you will be happy to know that the church has made arrangements with Olan-Mills to publish a pictorial directory of the congregation. Pictures will be taken December 7 & 8 and January 8 & 9, 2010. See Heather Smith or Rita Peterson in the parlor following worship to sign up for an appointment, or call the church office today!

SIGN UP FOR YOUR APPOINTMENT TODAY!



PERIODICAL
POSTAGE
PAID

Address Service Requested

PASTOR: THE REV. THOMAS P. REID
ASSOCIATE PASTOR: THE REV. ANDREW F. DAVIS
DIRECTOR OF CONGREGATIONAL CARE & MISSION: BECKY EWING
PASTOR EMERITUS: DR. BERNARD R. HAWLEY
Address: 308 S. 8th Street, Salina, KS 67401
Mailing: P.O. Box 585, Salina, KS 67402-0585
Phone: (785) 825-0226
Fax: (785) 825-2107
E-mail: office@fpcsalina.org
Web Site: www.fpcsalina.org



THE NEWS (UPS708-620) is published monthly by First Presbyterian Church, P.O. Box 585, 308 S. 8th Street, Salina, KS 67401.
Periodical postage paid at Salina, Kansas. POSTMASTER: send address changes to THE NEWS, P.O. Box 585, Salina, KS 67402-0585.

The next newsletter will be mailed November 19.

The Sunday service is broadcast each week at 10:15 a.m. on KINA, 910 AM .

If there is something you would like included in *The News*, email sally@fpcsalina.org

*As we begin FPC's 150 year celebration,
we honor where we've been and where we're going.
Recognizing the ever increasing need to stay
connected, FPC is unveiling its new web site!*

www.fpcsalina.org

Same address...different look.



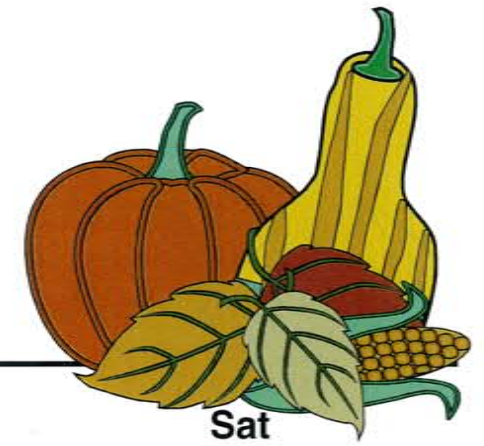
NOVEMBER

FIRST PRESBYTERIAN CHURCH

308 S 8th Street, Salina, KS 67401 785-825-0226 office@fpsalina.org



**Remember to set your clocks
BACK 1 hour at 2 am November 1!**



Sun

Mon

Tue

Wed

Thu

Fri

Sat

<p>1 150th Celebration All Saints Sunday 9:00 AM "Reel" Faith 9:00 AM Multi-age Church School 9:00 AM Faith Matters 10:15 AM Worship ☪ Communion 11:30 AM Bible Study turn in food bags!</p>  	<p>2 1:15 PM CE Staff Meeting 2:00 PM Staff Meeting 6:00 PM CAPS Parenting Class 6:30 PM Boy Scouts 7:00 PM Divorce Support</p>	<p>3 10:00 AM Cares & Concerns Meets 12:00 PM Evangelism 7:00 PM Cub Scouts 7:00 PM Grief Support</p>	<p>4 3:30 PM Personnel Cmte 3:30 PM Wednesday Programs 5:30 PM Youth Group Meets (delivers food to Food Bank) 5:30 PM WOW 7:00 PM Choir Practice</p>	<p>5 1:30 PM Parkinson's Support Group</p>	<p>6 <i>Jesus Unboxed is canceled for November 6.</i></p>	<p>7</p>
<p>8 9:00 AM "Reel" Faith 9:00 AM Multi-Age Church School 9:00 AM Faith Matters 10:15 AM Worship ☪ Cherubs Sing ☪ Sunday Enrichment 11:30 AM Bible Study</p>	<p>9 1:15 PM Staff Meeting 5:30 PM Joint Session/Deacon Mtg & Dinner, Exam of New Officers 6:00 PM CAPS Parenting Class 6:30 PM Boy Scouts 7:00 PM Divorce Support</p>	<p>10 10:00 AM Cares & Concerns Meets 7:00 PM Cub Scouts</p>	<p>11 3:30 PM Wednesday Programs 4:00 PM Social Justice & Mission Mtg 5:30 PM Youth Group Meets 5:30 PM WOW 7:00 PM Choir Practice</p>	<p>12 12:00 PM FHC Board Mtg</p>	<p>13 JESUS UNBOXED City County Building at noon (see newsletter for details)</p> 	<p>14</p>
<p>15 9:00 AM "Reel" Faith 9:00 AM Multi-Age Church School 9:00 AM Faith Matters 10:15 AM Worship ☪ Sunday Enrichment 11:30 AM Bible Study</p>	<p>16 1:15 PM Staff Meeting 6:00 PM CAPS Parenting Class 6:30 PM Boy Scouts 7:00 PM Divorce Support</p>	<p>17 10:00 AM Cares & Concerns Meets 5:30 PM League of Women Voters 7:00 PM Cub Scouts 7:00 PM Grief Support</p>	<p>18 12:00 PM Salina Child Care Mtg 3:30 PM Wednesday programs 5:30 PM Youth Group meets 5:30 PM WOW 7:00 PM Choir Practice</p>	<p>19 9:30 AM CACFP Meeting 10:30 AM PNews Mailed 12:00 PM Board of Trustees</p>	<p>20</p>	<p>21</p>
<p>22 9:00 AM "Reel" Faith 9:00 AM Multi-Age Church School 9:00 AM Faith Matters 10:15 AM Worship ☪ Midweek/Fellowship Sing ☪ Sunday Enrichment 11:30 AM Bible Study</p>	<p>23 1:15 PM Staff Meeting 6:00 PM CAPS Parenting Class 6:30 PM Boy Scouts 7:00 PM Divorce Support</p>	<p>24 10:00 AM Cares & Concerns Meets 7:00 PM Cub Scouts 7:00 PM Choir Practice</p>	<p>25</p>	<p>26 <i>FPC is closed for the Thanksgiving holiday!</i> (gobble gobble.)</p>	<p>27</p>	<p>28</p> 
<p>29 10:15 AM Worship ☪ Communion</p> 	<p>30 1:15 PM Staff Meeting 6:00 PM CAPS Parenting Class 6:30 PM Boy Scouts 7:00 PM Divorce Support</p>	<p>THINK AHEAD TO DECEMBER: Sunday, Dec 6: Midweek Christmas Program, 4 pm in Blair Hall Sunday, Dec 13: "The Word in Music" Sunday, 10:15 am Sunday, Dec 20: 150th Celebration: White Gifts & 150 Things Offering</p>				