

## CCM Cross Jr. Program

### *Message from Sue Sneath, New Holland Elementary School Principal*

The school community at New Holland Elementary School understands the old adage, *"Students don't care how much you know until they know how much you care"* ~ (Anonymous). As much as we try to make it clear to our students that they are valued and cared for at New Holland, there are times when it is most appropriate to reach out for community support. It is through our mutual passion, to ensure that the needs of children are met, that New Holland Elementary School and the Cross Connection Ministries began our partnership.

The Cross Jr. Program was developed to provide young people, ages 8-11 years old, a safe and supported environment for children to complete their homework. The program offers a healthy after school snack, supervised games or crafts, and 30 minutes of homework time with support from a caring adult. Educators from New Holland Elementary School stop by or volunteer at the Cross Jr. Program on a weekly basis. In addition to the weekly Cross Jr. meetings, the program coordinates special events in the summer to keep the group of students connected and a daily summer lunch program which provides lunches for approximately 150 people per day.

In addition to the support with homework, the Cross Jr. Program focuses on providing children with the spiritual guidance and confidence to grow and learn how to best navigate the world around them. With the support of caring adults in the school, at New Holland Elementary and in the community, at Cross Connection Ministries, we hope to ensure that our children develop a feeling of self-worth and resiliency to become contributing members of society who are prepared to reach any goals that they set for themselves in the future.



*"The Cross is an amazing place to go. I wish I could go more and hang with friends & go to more cool interesting places. I think some of you guys should go there and see how fun it is!"*

*- Cross Jr. Student*

## CCM Director's Thoughts...



It has been a "remarkable" year at CCM. We have grown in so many ways! Funds continue to help us run the ministry, donations are coming in to help us renovate facilities and we have met many of our goals for the year. However, what stands out in my mind from this past year are the relationships that have been built in the lives of youth and families in our community. This community is what I would describe as extraordinary! When I hear

testimonies of life-change I am encouraged to continue to share what CCM is doing in Elanco! Mentors are being life-lines of hope and Youth Center volunteers are being "moms and dads" to many who need a stable loving adult in their life.

While I often hear stories of pain, poverty and fear, I also get to hear how people are providing hope in dark times. I recently heard about a Mentor encouraging her adult mentee during a very difficult time in her life. The mentee shared on Facebook about how her Mentor is being the support she never had in life and helping to point her to a very faithful Father.

Continued on page 7

# Cross Connection Board & Staff

## EXECUTIVE BOARD

### CHAIRMAN:

Bryan Naranjo  
*New Holland Church  
of Nazarene*

### VICE - CHAIRMAN:

Sara Bare  
*LCBC*

### TREASURER:

Galen Newswanger  
*Bethany Grace  
Fellowship*

### SECRETARY:

Maria Buck  
*Petra Church*

## BOARD MEMBERS

Arlene Andrews  
*Christian Fellowship  
Church*

Bruce Eberly  
*Bethany Grace  
Fellowship*

Eugene Horning  
*Weaverland  
Mennonite Church*

Carol Lehman  
*Christian Fellowship  
Church*

Tim Stauffer  
*Weaverland  
Mennonite Church*

Gerry Weaver  
*Christian Fellowship  
Church*

Lynda Weaver  
*Christian Fellowship  
Church*

## ADVISORY BOARD MEMBERS

Chief Donald Bowers  
*Chief of Police, New Holland*

Thomas Fanning  
*Kling & Fanning, LLP*

Dr. Robert Hollister  
*Superintendent of Schools –  
Eastern Lancaster County  
School District*

Greg Hostetter  
*Realtor, Hostetter Realty*

Wilbur G. Horning  
*Mayor  
New Holland Borough*

Pastor Titus Kauffman  
*Assistant Pastor of Care,  
Petra Church*

Stephen Loewen  
*Radio Shack, Owner*

Deb Reimers  
*Community Volunteer*

Judy Weaver  
*President,  
Martin's Trailside Express*

Andrew Zimmerman  
*President,  
Zimmerman's Roofing*

## STAFF

**EXECUTIVE DIRECTOR:**  
*Meredith Dahl*

Office Manager  
*Lisa Kerstetter*

Summer Lunch Program  
Overseer  
*Mariah Good*

YC, Female Overseer  
*Abby DuBruille*

Prayer Coordinator  
*Jacqui Ivey*

## Partnering Organizations:

**Bethany Christian  
Services**

**Coby's Family  
Services**

**Compass Mark**

**Garden Spot Village**

**ELANCO Social  
Services**

**ELANCO School  
District**

**ELANCO Library**

**Lancaster County  
Head Start**

**Magisterial District**

**New Holland YMCA**

**Power Pack  
Project Site**

**Susquehanna Valley  
Pregnancy Center**

## A Special Thank You To:

**Waltman**  
**Accounting**

*Payroll, Bookkeeping & Income Tax Services*



*Martin  
Mulch Products*

55 Woodcrest Dr., Ephrata PA 17522

*To all the **CCM Volunteer Staff, Mentors & Tutors** for spending time with the students and helping to change lives! And to all the **churches, businesses and individuals** who continue to support the ministry at CCM! We are blessed by your faithful generosity!*

## CCM Programs

**OPEN DOOR:** Students are able to come to a youth center for fun, caring, and safe connections with adults ~ plus a free meal is provided by churches and families. Lots of activities and events are offered.

**MEAL PROGRAM:** The Meal Program is offered all year long. We believe that meeting physical needs of youth is an impactful part of ministry, of the Church and at CCM. Meals are offered 5 days a week ~ both lunch and dinner in the summer.

**GUYS & GIRLS GROUPS:** On Wednesday evenings throughout the summer the girls and guys of CCYC will travel throughout Lancaster County learning skills and experiencing new activities!

**CROSS JR:** Kids in grades 2-5 can come to CCYC after school for homework help, games, snacks and support by caring adults. In the summer kids will have the opportunity to attend special events.

**MENTORING:** Caring and safe adults meet one on one with kids to build healthy relationships and teach life skills. The purpose of mentoring is to be an emotional, stable support in their life.

**ADULT MENTORING:** CCM also offers mentoring for adults. Adults in the community who seek healthy adult relationships can be matched with another adult for mentorship and support through life's difficulties.

**TUTORING:** Tutoring assists students so they are able to excel in their assignments and complete their school work. Tutoring encourages youth to stay in school and graduate.

**CROSS CARES:** There are needs in the community that are often unmet in the lives of students and families. CCM helps to connect local and county resources to families to support them in life's difficulties. Cross Cares encourages the Church to reach out and meet physical, emotional and spiritual needs.

**SUMMER LUNCH PROGRAM:** CCM partners with the Elanco Social Services Network and YMCA at New Holland to provide lunch five days a week for ten weeks to 150 children at locations in New Holland, Terre Hill and East Earl.

**GIRL'S CIRCLE BY COBYS:** This is a structured support group for girls ages 9-18, teaching skills that are designed to increase positive connection, personal and collective strengths, and competence.

**SAFE FAMILIES PLUS:** In partnership with Bethany Christian Services, CCM seeks places where students are able to receive a lasting support system or temporary housing.

**POWER PACK PROJECT SITE:** CCM, in partnership with ESSN, the ELANCO School District and GSV, offer families healthy meals to be prepared on the weekends. This occurs weekly, with pick-up at CCM, Weaverland Mennonite Church and Petra Church throughout the school year.

**PARTNERING WITH PARENTS:** Quarterly parenting classes by Coby's are offered at CCM. A meal & childcare are included in these free workshops.

**GETTING AHEAD CLASSES:** See article on page 1 for more information.

## Upcoming Events

### Run to Help Children

**Saturday, July 25, 2015** at Brubaker Park in East Earl. CCM is partnering in this awesome 5k color run event. 10% of the event proceeds received will go to CCM. Check out the website [www.RunToHelpChildren.com](http://www.RunToHelpChildren.com) for more details.

### Golf Tournament 2015

**Monday, September 14, 2015** at Foxchase Golf Club. Register a 4-some by September 11, 2015 to join us in this amazing event raising funds for CCM! For more information and to learn about being a sponsor visit [www.elancocross.org](http://www.elancocross.org).

### SquiresSide Give Back Days!

Visit SquireSide Café the week of **September 6-13** and 15% of your total bill will be donated to CCM! Print a flyer at [www.elancocross.org](http://www.elancocross.org).

### Parade Night at NH Fair

**Wednesday, September 30, 2015.** Stop by CCM for a tour of our facilities & get a great meal (best prices at the NH Fair!). We will have pulled pork bbq, baked potatoes, baked goods, drinks and lots more! All proceeds benefit CCM!

### Trunk or Treat Night

**Saturday, October 31, 2015**

CCM once again will be partnering with Summit View BIC Church for this special evening. Decorated cars & trucks will line Franklin Street and volunteers will hand out candy. This event provides a fun & safe place for kids to trick or treat!

### Christmas Gift Giving Program

**October-December 2015**

In 2014, the community came together to make sure over 400 students received Christmas gifts! CCM will once again oversee this project.

Program details will come out mid-October.

If you are interested in sponsoring a student or family, or to help deliver gifts, please contact [office@elancocross.org](mailto:office@elancocross.org).

### The Extraordinary Give Event

**November 20, 2015**

Please mark your calendars for this 24-hour day of giving! More information to come.

### 2016 Annual Banquet

**Tuesday, March 29, 2016** at Shady Maple Banquet Center. You don't want to miss this evening as we preparing for a special guest speaker! Mark your calendars!





Beautiful Sight!

## 2015 Capital Campaign

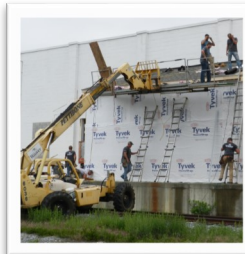
As we have mentioned in the past, CCM has outgrown all of its current facilities. Expansion is necessary for our programs' sustainability and future growth. We have two phases for this project. The first is to renovate 6,500 square feet in the warehouse across the street (100 W Franklin Street) to provide a new Youth Center facility that is double our current space. The new Youth Center will allow meal time to be done at tables, larger basketball and skate areas, environments for Bible study, and a kitchen to meet all the food and meal needs. The Youth Center program has significantly increased over the last two years and space is important to reach the youth and challenges they face. This building will be "home" for many youth, and volunteers will be the family and support that many of them need. We have already started renovating this space and are almost half way completed!

### Second Phase

The second phase is to renovate the current Youth Center so that it can be used to increase the Cross Jr. program (2nd-5th graders), all of our meal programs and basic need assistance programs (Power Packs, Free Summer Lunch, Back Pack Giveaway, Christmas Program, Winter Coat Giveaway, Cross Cares, Tutoring & Homework Help Time.) Repurposing this space will allow us to sustain growth and enhance all CCM's programs so they can be more successful. The new space will offer youth and families the opportunities for giving back and provide volunteers more changes to be involved in the lives of others. We are excited to have a commercial kitchen and space for our younger kids!

### Fundraising & You!

The total fundraising goal is \$326,745. With financial contributions and in-kind donations of supplies and labor we have already raised \$80,230! We have received help from different businesses to begin our project. We are currently seeking \$207,015 to complete **Phase 1** and have the Youth Center completed. We need an additional \$39,500 to complete **Phase 2**.



**In 2014, CCM became debt free and it is our prayerful goal to not borrow any funds to complete this Capital Campaign. Would you prayerfully consider helping us to complete this task while remaining debt free?** Please send your tax-deductible gift in an enclosed envelope and mark your donation Capital Campaign. We believe that together we can accomplish this great task!

To view more project pictures and updates, please visit [www.elancocross.org](http://www.elancocross.org). If you have any questions, please contact Meredith Dahl at [Meredith.Dahl@elancocross.org](mailto:Meredith.Dahl@elancocross.org). Thank you for your consideration.

**We have started renovations with the help of the following:**

Allied Building Products  
Bethany Grace Fellowship  
Choice Windows  
Eagle Disposal  
HC Quality Doors  
In honor of Vernon Martin  
King's Construction  
LCBC Ephrata  
Martin's Flooring  
Musselman's Lumber  
Terre Hill Concrete  
Smoker Door Sales  
Weaver's Construction  
York Building Products



*We exist to offer **help** and **hope** in the name of Jesus Christ to youth and families in the Elanco School District, and to provide a safe place for youth to connect with one another and caring adults.*





CCM Volunteers - Photo Booth Fun!

## Volunteer Appreciation Dinner

CCM relies heavily on volunteers to run the programs that reach out to youth and families. Relationships and the time invested in the life of someone else is the cornerstone of the ministry at CCM. Without them, we would not be able to reach students 5 nights a week at the youth center, or have mentors to reach out to close to 70 youth and adults or a program to help 2<sup>nd</sup>-5<sup>th</sup> graders.

Each spring we honor our volunteers during April's Volunteer Appreciation month. This year we held a banquet to celebrate all of CCM's Youth Center, Mentors, Tutors and Cross Jr Volunteers. Approximately 60 guests came to an evening where we served a meal with a special Italian Bistro theme!

Meredith Dahl, CCM's Executive Director, thanked the volunteers for their gift of "time" given to youth & adults in the community. Ryan Forbes, CCM's Youth Center Lead, shared about Christ's example of walking alongside people and the impact it made. He encouraged them that we ultimately learn from Christ's example and His grace. Anthony Torreulla, a Junior at Garden Spot High School, shared how volunteers have changed his life. Guests walked away with special gifts, flowers and doors prizes. We are so grateful for each and every volunteer! You are making a difference; one life at a time.

## Volunteer Spotlight

This past fall (2014), I received one of the CCM emails stating a need for some help on different days of the week. For some reason, God stirred in my heart that I should probably be doing something and I decided that I would start helping with Cross Connection one day a week on Wednesdays. It's been a great time of getting to know other volunteer staff and various Cross students. It is amazing to watch how God can use anyone to reach anyone he wants. The background that I am from and the background of the students that come is vastly different...yet at the foot of the cross, we are all the same.

CCM has grown tremendously over the last number of years. I knew of Cross Connection Youth Center on Main Street and became involved with CCYC when the ministry moved to Tower Road. Serving on the Board of Directors for a number of years, there are a lot of great memories and growth. From hiring different directors, starting the Annual Banquet, growing the Board of Directors and eventually purchasing the property on Franklin Street, none of this would have been possible without God's leading...especially had it not been for some individuals from Weaverland being obedient to Him to make this outreach to the students of New Holland. I am blown away to see how many different students this ministry is reaching and the number of programs that it offers to both students and parents.

Physically, CCM went from renting property, to owning the Youth Center, the Resource Center, and now is in process of utilizing a new space on Franklin Street for a bigger and better Youth Center. My prayer and hope is that many people will get involved with this Capital Campaign and that CCM will be able to do this project debt free.

I've come to realize that regardless of your age or financial status, we all have something that we can give. Some can give time – in being a CCM Volunteer, Mentor, Board of Director Member, cleaning, meals, etc.; some can give financially – whether it is \$1, \$5, \$10, \$25, \$1,000 or something even greater; and all of us can give prayer – that is certainly where the real ministry takes place each and every day. God is using

CCM to reach students (and their families), offering them help, hope and support in the name of Jesus Christ. If you are wondering what you should do...start by doing something! You won't regret it!



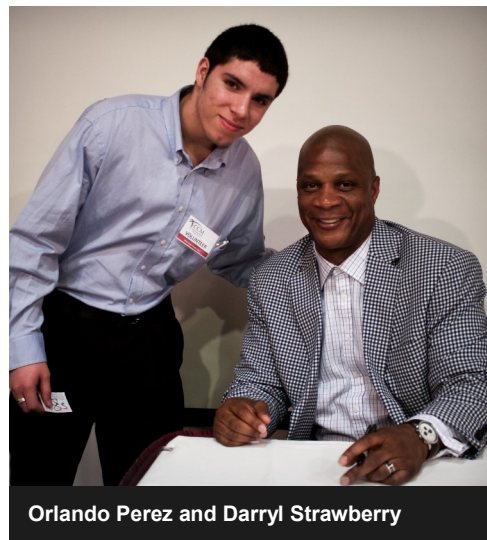
Bob McMichael



# 2015 Annual Banquet Update

Thank you everyone for another wonderful Banquet! It was a night that celebrated what is happening in our community and the collaboration between churches, businesses, the Elanco School District and individuals/families. We packed Shady Maple Banquet Center with two filled rooms of over 1200 guests!

The evening consisted of an update from Executive Director, Meredith Dahl, student and adult testimonies, and our special guest speaker, Darryl Strawberry. Strawberry shared his story of the journey he took to meet God. He shared of his days playing baseball and the struggles he dealt with. He talked about the ups and downs and how everything pointed him to Christ. Darryl was most passionate when talking about his relationship with God and what God is



doing in his life today. Today, Darryl is able to share his story with many people and uses his non-profit organization to reach others for Christ. He talked about how ministries like Cross Connection are so important to communities. He encouraged guests to support CCM and take care of the community youth. He also encouraged the rooms to give abundantly--which they did! CCM grossed over \$120,000 (which includes all sponsorships and donations raised that evening)!

Thank you to all donated generously to the ministry at CCM. Please take a moment to watch the CCM testimonial from that evening. You can see the video here: <https://www.youtube.com/watch?v=Y5eOZK5G6QU&feature=youtu.be>

## 2016 Save the Date!

Please mark your calendar for our 2016 banquet! The date is Tuesday, March 29th! Registration will open January 12, 2016.

## Getting Ahead Program

In August 2014, Cross Connection Ministries and ESSN began our very first Getting Ahead group. Group facilitators, Meredith Dahl and Joan Yunginger, met with a group of four adults for 16 weeks. The group met weekly learning about one another and becoming very close. They listened, cried, laughed and supported each other through life's difficult circumstances. Each week was an opportunity to learn more about life in poverty, gather knowledge from one another's experiences and work toward personal goals. At the end of 16 weeks each participant graduated with a list of goals. One individual wanted to find a church and grow in their walk with God. Another participant desired to make better financial decisions and made specific steps to get out of financial instability. Each one worked through his or her own resources and areas where they wanted to grow. It was encouraging to be able to observe and participate in personal growth! Getting Ahead is a curriculum that addresses persons dealing with poverty or living in unstable situations. The curriculum focuses on the impact poverty has had on their life and on their community. The goal is to help them see how valuable he or she is and encourage them to share their voice! It does not provide answers or make an argument for change. Instead it helps individuals evaluate their resources and work toward transition out of poverty. This program has been a wonderful addition to what CCM offers as it focuses on building relationships and sharing hope.

On March 12, 2015, we started a second Getting Ahead group with Joan Yunginger and Meredith Dahl once again serving as facilitators. Participants enjoy a meal, receive a gift card for their time and participation and work through the curriculum together for two and a half hours. This group will graduate June 25, 2015. A future group is scheduled to begin in August! In June, we are beginning a partnership for Getting Ahead grads! "What's Next" is an opportunity for our graduates to meet monthly to review goals and to continue learning. Trips to the Library, Free Geek Penn and dealing with stress are set up for the next few months. We are excited to continue learning together and seeing these grads reach their personal goals!

CCM would appreciate your prayers for each participant. We are also seeking help for donations of \$25 gift cards to local grocery stores or help with meals. Please contact the office if you are interested in partnering with us to see adult's transition out of poverty in our community!

# How to Get Involved

## Program Involvement:

- We currently have a big need for Youth Center volunteers. Youth Center volunteers help at the YC once a week. They build relationships with youth and spend time in recreational activities! Please pray and consider becoming a Youth Center Volunteer.
- Mentors: Consider investing in the life of a youth, teen or adult twice a month! Mentors shape a child's future or walk alongside an adult in their life. You and your mentee can share all kinds of activities. You could play sports together, go on a hike or just be an inspiration.
- Meal Program: We are seeking families, small groups, Sunday School classes, etc. willing to bring a meal to feed approximately 40 youth.
- Join the Cross Cares email list to receive current needs in the community and help meet a need!
- Pray for the ministry on a regular basis. You can always learn ways to pray by contacting our office to be added to our prayer email list. Being on this email list will alert you of our quarterly prayer meeting nights. Contact [prayer@elancocross.org](mailto:prayer@elancocross.org).
- Financial support! Please consider supporting CCM on a monthly basis! You can designate a monthly gift by automatic withdrawal. Visit [www.elancocross.org](http://www.elancocross.org) to sign up with your credit card or debit card.
- Join our CCM email list! We will send supporters regular updates on the progress of our warehouse construction. Contact our office to be added to the email list to receive CCM updates.
- Back to School Backpack Giveaway: School is out, but we are looking ahead to our fall programs. We are currently accepting school supplies! Assisting with these items helps families financially. Consider picking up items when you do your own back to school shopping this year.
- If you are interested in any of the above programs please contact us at [office@elancocross.org](mailto:office@elancocross.org).

## Summer Lunch Program

The Summer Lunch Program (SLP) has started again! With the rise of low-income, impoverished families in our community, we are continuing with the East Earl & Terre Hill expansion sites again this year. We believe it is important to make sure these lunches are accessible to all youth in the Elanco School District.

Last summer we served over 7,500 lunches. This year, we are planning to serve about 150 lunches per day for 10 weeks at three different locations. The low-income/poverty level for Elanco School District is close to 40%. We understand there is a real need for kids in Elanco School District

to receive food. Our desire is to not only meet this need, but offer healthy options as well.

If you are interested in helping with the Free Summer Lunch Program contact Mariah at [mariah@elancocross.org](mailto:mariah@elancocross.org).

## Current CCM Needs:

- **Pool Sticks**
- **\$25 Gift Cards** - For Getting Ahead Workshops
- **All Paper Products** - Specifically 8oz. disposable cups and dinner size paper plates
- **Office Supplies** - Stamps & mailing labels
- **Capital Campaign** - Financial or in-kind donations

## Director's Thoughts...*continued from Page 1*

I was also informed about a young student who wanted to quit school and give up, but a volunteer walked with them and showed up at school with them to make sure they didn't!

It has been an amazing year. But as many of you know- we aren't done yet! There is still much to do. There are youth and adults who are feeling helpless. There is an increasing amount of poverty and many are choosing not to attend churches. There are plenty of needs to keep us focused on our mission of offering help and hope in the name of Jesus Christ. While CCM continues to grow in programs, facilities and needs your partnership becomes more important! Please continue to pray for CCM and the needs of the community. CCM is also in several transitions. We are in need of a full-time Program Director and a part-time Youth Center Lead. (For more information contact me at [Meredith.Dahl@elancocross.org](mailto:Meredith.Dahl@elancocross.org).) Please pray for CCM as they interview and look to fill these roles. Another transition this fall includes some time off as I take off for maternity leave. My family is excited to welcome another baby boy to the Dahl Family. We are also in the middle of a Capital Campaign at CCM. Please read the article on the Capital Campaign to learn more! We would appreciate your prayers as we work through these transitions and experience some growing pains!

I personally value each CCM supporter and volunteer. Your help in time, resources, energy, prayers and donations constantly make me grateful to live and work in this community. It is an honor to serve with you to see lives changed by Jesus Christ. Thank you for making it a joy to work alongside of you.

For His Kingdom,

**Meredith Dahl**

Executive Director



## Cross Connection Ministries

PO Box 154

New Holland, PA 17557

Non Profit Org  
US Postage  
PAID  
Permit No 251  
Ephrata, PA

Address Service Requested



## Cross Connection Ministries would like to thank the following 2015 Banquet Sponsors:

