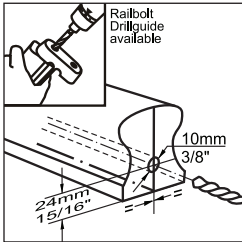


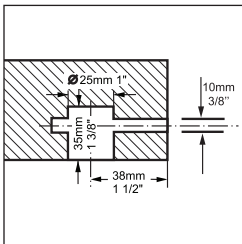


Hand Rail Connection

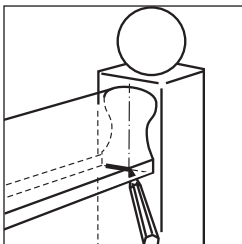
SlipFix ZipBolt™ (3001SF) Instructions



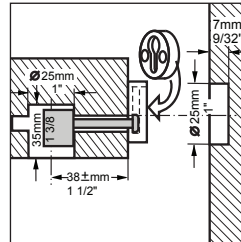
1. Mark position of 3/8" hole onto end of rail. As an alternative to marking hand rails for drilling, the Railbolt Drill Guide is available, making it fast and easy.



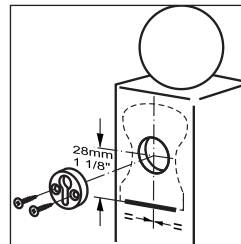
2. Mark and bore 1" and 3/8" holes as indicated.



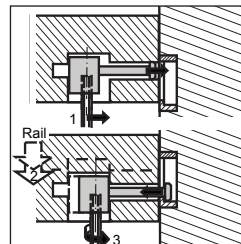
3. Mark final position of the hand rail onto post, observing the center line.



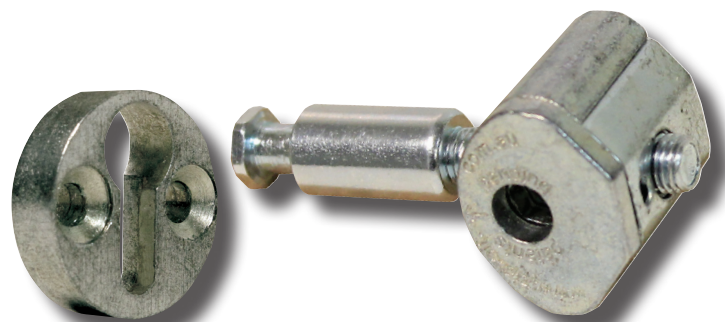
4. Assemble the shaft and gear housing into the rail.



5. To mark the center of the keyhole disc, measure 1-1/8" upwards from the bottom of the rail position. Using a 1" bit, bore hole into post 9/32" deep so the keyhole disc is flush or slightly under. Secure disc with screws.



6. The shaft should be flush or under the surface of the rail end. Using a 5mm hex bit in a tool or allen wrench (fitted into the gear head), the shaft can be moved to engage into the disc keyhole. Then simply push rail downwards and tighten.



Gear Head...
Single piece gear head allows you to tighten your fitting to the rail with a drill driver or allen wrench.

See catalog or www.creativestairparts.com for installation hardware accessories.