

# THE SERVANT

SPRING/SUMMER 2014



The  
**Hope Connection**  
is now a reality!  
Read about how this  
new social network  
tool is designed to  
help  
families.

[hopeconnectionccdm.com](http://hopeconnectionccdm.com)

The  
**North American  
Christian Convention**  
will be in Indianapolis  
July 8—11.  
Once again this year,  
CCDM will be in charge  
of staffing the  
**Respite Room** during  
the Main Sessions.



Come by and visit us  
at **Booth # 1532 !**

## FROM OUR EXECUTIVE DIRECTOR



Welcome to the Spring/Summer edition of **The Servant**! So much has happened and is still happening since our last newsletter that I decided to combine the Spring and Summer editions. Here is a short list of what's been going on.

- We launched **The Hope Connection** in May. (See page 5.)
- Our May Board of Directors meeting was great and we will be expanding services into Versailles, Missouri next summer. (See page 4.)
- We have already had several short term mission teams spend time with us. Jr. Hi groups from Grandview CC and Crossroads CC, a Jr. Hi team from Savannah Christian, a family group from Southeast Christian and a team from Bridges Christian, to name a few.
- We had an audit/inspection from the State of Tennessee.
- Our residents have already made their first journey of the year to Dollywood.
- Meetings in Indiana...preparations for the North American Christian Convention where we will again be leading the local teams to provide respite care for families dealing with special needs during the main sessions.
- We were a sponsor for the **Accessibility Summit** in McLean, Virginia. This is a great event addressing Disability Ministry in a very personal way.

In addition to that, we have had four parents of our residents pass away in the last six months and we have welcomed a new resident. It all reminds me of my 4 year-old granddaughter, Emily. She was with her family at the park and, after a day of playing hard, the family headed for the car.

### Christian Churches Disability Ministry

Gary W. Spangler  
Executive Director

Roy Row  
Director of Spiritual  
and Outreach  
Development

Carol Hundley  
Administrative Asst.

P.O. Box 310  
Louisville, TN  
37777-0310

865.984.5178

[ccdmonline.org](http://ccdmonline.org)

### Riverwood Campus

Rhonna Sanford

### CCDM Board of Directors

Walt Dooley  
Edwin Griffin  
Cecil Howard  
Lynn Howard  
Bart Jones  
Scott Kent  
Bill McLendon  
Drew Mentzer  
Richard Mullineux  
Webster Olgesby  
Dale Sikes  
Wayne Spangler

### Directors Emeritus

Ziden Nutt  
Wayne B. Smith  
Sam Stone

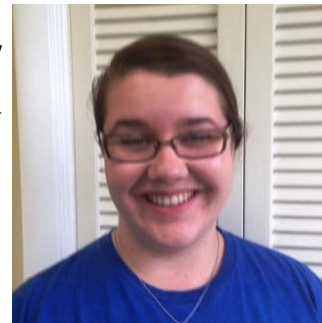
As her mother, father, and big sister were in front of her, she called out, "Hey, slow down. I got "the slow feet." Sometimes I feel like I got "the slow feet." The other day, one of my preachers, Kyle Idleman, talked about busyness and how it can be just a "filler" for emptiness. Yes, even "ministry" can become filler through busyness. Wayne B. Smith told me once, "if Satan can't make you sin, he'll make you busy." So enjoy your newsletter and please pray for us as we are busy sharing the Good News with the Disability Community and encouraging and teaching others to do the same.

In His Service,



## SPOTLIGHT ON OUR RESIDENT ASSISTANTS

It never ceases to amaze us how God provides. As you can imagine, when the college school year ends, we generally have difficulty in finding workers. This year was no exception. When Rhonna asked the staff if they knew of someone who would be interested in working, Micah suggested that we call his sister. As a result, of that referral, we now have **Erin McCrotty** working with us.



Erin joined our staff in early April and has been a wonderful addition to our "family." She is highly motivated, as she not only works for us full-time, but also works at Kroger and sells Mary Kay, as well. Erin graduated from Johnson University in April.

Erin was already acquainted with several of our residents because of Micah, so she fit right in. She has a wonderful sense of humor, but she also has the ability to calm and "defuse" volatile situations. She is becoming fast friends with everyone here. Please help us welcome Erin into our Riverwood family.

## WE ARE EXPANDING INTO MISSOURI

Welcome to the "Show Me State." We are proud to announce that CCDM will be expanding into **Missouri**, with the building of a nine-person facility in Versailles. Versailles is located in the Missouri countryside, about 40 miles east of the state's capital of Jefferson City and 23 miles north of the Lake of the Ozarks resort area.



The concept of having a group home for adults with developmental disabilities is becoming a reality after several years of CCDM working closely with New Hope Christian Community, a disability ministry in Missouri. Recently, at a meeting in Versailles, Gary Spangler, CCDM's Executive Director said, "This is a testament of how ministries can work together to provide the care for others that Paul wrote about in Galatians 5:6. The only thing that counts is *faith expressing itself through love*."

The building will be constructed by the **Jack Ballard Church Builders** in the spring of 2015. The church builders have built over 100 churches, church additions and camps. This is the same group that built the new facility at our Riverwood Campus in 2011.



Morgan County Courthouse in Versailles.

Please be praying for us as we finalize the plans, get licenses from Missouri, attain building permits and work out deals with local suppliers. You will hear more about this in the coming months.

## THE HOPE CONNECTION

# Welcome to The HOPE CONNECTION

The HOPE CONNECTION is up and running and we are ready for you to **Sign Up** and **Sign In**. We are thrilled to get this social network off the ground and now we have to get the word out. This is where we need your help. Here's how it works:

First, go to [www.hopeconnectionccdm.com](http://www.hopeconnectionccdm.com) and click **Sign Up** in the upper left hand corner. This will take you to the "Sign Up for The Hope Connection" page. Fill out the required information and click **Sign Up** at the bottom. It really is that simple. Now share it with others. Here's how:

Log on to the **Welcome** page:

[www.hopeconnectionccdm.com](http://www.hopeconnectionccdm.com), and click on 

You're done. That's all you need to do to help us help others who are looking for hope.

Say you don't want to sign up. We are a forgiving group, so all you have to do is go to the site at

[www.hopeconnectionccdm.com](http://www.hopeconnectionccdm.com), and click on 

That's it. This is so easy but it is so important for us to let people know there is hope in a hopeless world. Do it today!

You can also find us on Facebook. Just type in **The Hope Connection** in the search box.



## GIFTS TO HONOR

Through May 31, 2014

### In honor of:

Trudy Daffon  
Ham Hamlett  
Ray Lambert  
Pat Hudgins  
  
Jack Mathis  
Jim Pierson  
Rocky and Vicki Rockmore  
Glenna Sandefur

Dale and Dianne Sikes  
Art Stansberry  
Mary C. Witt

### Given by:

Gene and Carole Kimbrell  
Jack and Dot Pickett  
Jack and Dot Pickett  
Reach Out Revival Class  
Mt Carmel CC (GA)  
Gene and Carole Kimbrell  
Sybil Knight  
Jack and Dot Pickett  
Paul and Suzie Greene  
Mary Helen Sandefur  
Tim and Ann Sandefur  
Mortons Gap (KY) CC  
Gordon Dickerson  
Gene and Carole Kimbrell  
J.P. Witt

## OUR RESIDENTS' BIRTHDAYS



May	17	Donald
May	24	Tom K
June	9	Stacy B
June	26	Frank M
September	9	Scott W
September	18	Kathy
September	23	Rebecca

Since this newsletter is coming out later than planned, we know some of these birthdays have already occurred.

We appreciate your remembering our residents on their birthdays.

Please mail your cards to our residents at:

**Riverwood Campus  
3123 Pride Road  
Louisville, TN 37777**

## GIFTS TO REMEMBER

Through May 31, 2014

### In memory of:

Betty Bushelman

Faye Carroll

Ginger Edwards

Marianne Hamlett

Clara Frances Howard

Jan Hudgins

Loyd A. Mitchell

Allen L. "Dink" Moore

Edward Spencer

Mary Helen Sandefur

Margaret Spangler

Bob Swiger

Donna Tate

Barbara Williams

Keith Williams

### Given by:

Sybil Knight

Jim and Norma Pierson

Woodlawn Christian Church

Knoxville, TN

Harry and Sandra Fuller

Jack and Dot Pickett

Gene and Carole Kimbrell

Peggy McCord

Jack and Dot Pickett

Ronald G. Williams

Jack and Dot Pickett

Peggy McCord

Jack and Dot Pickett

Beverly Spencer

Robbie M. Baird

Fayetteville (GA) Christian Church

Fayetteville (GA) CC Choir

Phyllis Marlene Deason

Jimmy and Martha Miller

Kathy Miracle

One Accord Class /

Fayetteville (GA) Christian Church

Steve and Denise Sandefur

Kenny and Debbie Stanley

Marjorie Wilkerson

Wayne and Ida Mae Spangler

Jack and Dot Pickett

Jim and Norma Pierson

Benny & Sherry Shaw & Shay Nix

Mick and Lorna Cochrane

John and Christina Hines

Dillard and Stevie McBride

Mike Sanders

Gordon Dickerson

Jack and Dot Pickett

Jack and Dot Pickett



## “Me Buddy?”

For as little as **\$25** a month, you can help to sponsor a resident at Riverwood. We currently have four (4) residents who need financial assistance. If you, your Sunday school class, small group or anyone would be interested in helping one of our residents, please call us at **678.614.4115**, or visit our website at [www.ccdmonline.org](http://www.ccdmonline.org) for more information. We will send you a picture and information about the person you are sponsoring. **Won't you help us to help them?**

# The Servant



Return Service Requested

Non-Profit Org.  
U.S. Postage Paid  
Knoxville, TN  
Permit #573

and

**Riverwood Campus**

P.O. Box 310  
Louisville, TN 37777  
865 - 984 - 5178  
[www.ccdmonline.org](http://www.ccdmonline.org)

**Volume 5 Number 3  
Spring/Summer 2014**