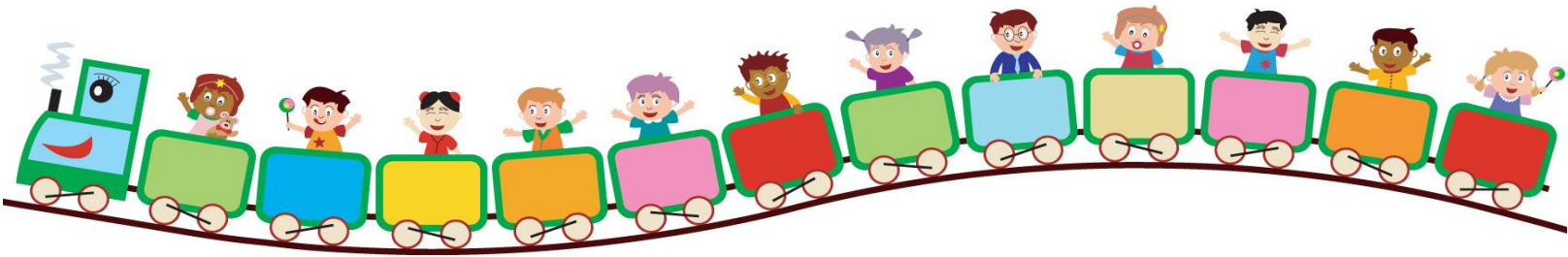


Cave Spring Baptist Weekday Preschool

Lori Morgan – Director
540-989-5486; lmorgan@csbc.us



Class	Special Requirements	Day(s) and Times	Monthly Tuition	Tuition Plus Early Drop Off*	Ratio
Two Year Olds	Must be two by 12/31/15 Does not need to be potty trained	Wednesday 9-1:00	\$92.00	\$111.00	1 to 5
		Monday 9-12:00 Friday 9-12:00	\$137.00	\$170.00	
		Tuesday 9-1:00 Thursday 9-12:00	\$144.00	\$181.00	
Young Three Year Olds	Must be three by 12/31/15 Must be in the process of potty training	Tuesday 9-1:00 Thursday 9-12:00	\$124.00	\$161.00	1 to 7
		Monday 9-12:00 Wednesday 9-1:00 Friday 9-12:00	\$138.00	\$188.00	
Three Year Olds	Must be three by 9/30/15 Must be potty training	Tuesday 9-1:00 Thursday 9-12:00	124.00	\$161.00	1 to 8
		Monday 9-12:00 Wednesday 9-1:00 Friday 9-12:00	\$138.00	\$188.00	
		Monday 9-12:00 Tuesday 9-1:00 Wednesday 9-1:00 Thursday 9-12:00 Friday 9-12:00	\$180.00	\$267.00	
Four and Five Year Olds	Must be four by 12/31/15 Must be potty trained	Tuesday 9-1:00 Thursday 9-12:00	\$119.00	\$161.00	1 to 10
		Monday 9-12:00 Wednesday 9-1:00 Friday 9-12:00	\$138.00	\$188.00	
		Monday 9-12:00 Tuesday 9-1:00 Wednesday 9-1:00 Thursday 9-12:00 Friday 9-12:00	\$170.00	\$257.00	

***Early Drop Off Option: 8:15am \$5.00 per day.**

This option costs is based on the number of days the child will attend for the entire year divided by the nine months of school. This does not include holidays or days that the preschool is closed due to Roanoke County Schools schedule.

Preschool Calendar 2015-2016

September		Modified Schedule (Check September Calendar)	
	16	Preschool Early Dismissal - 3's, 4's, 5's Mon/Wed Fri 2's dismiss at 12:00 – No Lunch Wed. 2's dismiss at 11:00 – No Lunch	12:00 No Lunch... (County early dismissal)
October	14	Preschool Early Dismissal (County early dismissal)	12:00 No Lunch...
	20	Preschool Closed – County Teacher Work Day	
November	3	Preschool Closed – Election Day	
	25	Preschool Early Dismissal	12:00 No Lunch... (County early dismissal)
	26, 27	Preschool Closed – Thanksgiving Holidays	
December	9	Last day for the W 2's	
	14	Christmas Program - MWF 3's, M-F 3's and MWF 4's (last day for these children) Last day for M/F 2's	
	15	Christmas Program - T/Th 3's, T/Th 4's and M-F 4/5's (last day for these children) Last day for the T/Th 2's – Dismissal 12:00 – No Lunch	
	16	Christmas Program Make-up Day (if needed) No preschool if programs are the 14 th and 15 th	
	16-Jan 1	Christmas Holidays	
January	4	Preschool Resumes	
	15	Preschool Closed – Martin Luther King, Jr. Day	
	19	Preschool Closed – County Teacher Work Day	
February	8	Preschool Closed – County Parent/Teacher Conferences	
March	24	Preschool Closed – County Teacher Work Day	
	25-April 1	Preschool Closed – Easter Holiday	
April	4	Preschool Resumes	
May		Ice Cream Celebration – W 2's (last day for these children)	
	23	Ice Cream Celebration – M/F 2's (last day for these children) Programs for M/W/F 3's, M-F 3's and MWF 4's (last day for these children)	
	24	Ice Cream Celebration – T/Th 2's (last day for these children) Programs for T/Th 3's, T/Th 4's and M-F 4/5's (last day for these children)	