

CAMP-of-the-WOODS

A Christian Family Resort & Conference Center Located in the Adirondack Mountains

Summer 2017



Where Great Things Happen



Welcome

CAMP-of-the-WOODS is a modern Christian family resort located on beautiful Lake Pleasant in the southern Adirondack Mountains of New York State.

Renowned, Christ-centered leaders share Bible-based messages in daily chapel services, while teens and kids enjoy relevant, challenging, and fun programs. The possibilities for enriching family activities are abundant as you enjoy the beauty of God’s Creation.

Most guests come for a week at a time and enjoy staying together as families. Join the thousands who come each year to experience our safe and wholesome environment. You and your family will grow closer together and closer to Christ while having a great vacation.

Our Mission

The mission of CAMP-of-the-WOODS and Gospel Volunteers, Inc. is to present the Biblical truths of Jesus Christ, develop Christian Leaders, strengthen the faith of individuals and families, and promote global evangelism.

With a rich tradition of service and excellence, CAMP-of-the-WOODS strives to build up the body of Christ through its five ministry arms: Summer Season, Conference Season, Tapawingo, LIFT, and the Missions Program.

Table of Contents

Chapel Speakers.....	1-2
Seminar Speakers	3-4
Music Program	5
Sports Emphasis	6
Kids’ Klub.....	7
Teens	8
Family Activities.....	9-10
Camp Map	11-12
Accommodations & Rates.....	13-14
Summer Accommodations	15
Larsen Lodge	16
Our Community.....	17-18
Summer Staff	19
Tapawingo	20
LIFT	20
Conference Season	21
Family Retreats	22

Summer 2017 Speakers

WEEK 1

June 24 - July 1



Dr. Tony Evans & Dr. Rex Keener

WEEK 2

July 1 - 8



Dr. Charles Zimmerman

WEEK 3

July 8 - 15



Pastor Colin Smith

WEEK 4

July 15 - 22



Dr. Crawford Loritts & Dr. Jim Samra

WEEK 5

July 22 - 29



Dr. Ravi Zacharias & Dr. Abdu Murray

WEEK 6

July 29 - August 5



Dr. Lon Solomon

WEEK 7

August 5 - 12



Dr. Kurt Bjorklund

WEEK 8

August 12 - 19



Dr. Mark Bailey

WEEK 9

August 19 - 26



Dr. Jay Abramson

WEEK 10

& Labor Day Weekend
August 26 - September 4



Dr. Woodrow Kroll

Speaker Information

Every year CAMP-of-the-WOODS brings in world renowned speakers to share the Word of God with our guests and staff.

WEEK 1

June 24 - July 1

- **Dr. Tony Evans**
Senior Pastor, Oak Cliff Bible Fellowship
President, The Urban Alternative
Dallas, TX
- **Dr. Rex Keener**
Senior Pastor
Grace Fellowship
Watervliet, NY

WEEK 5

July 22 - 29

- **Dr. Ravi Zacharias**
Founder and President
Ravi Zacharias International Ministries
Atlanta, GA
- **Dr. Abdu Murray**
North American Director
Ravi Zacharias International Ministries
Atlanta, GA

WEEK 2

July 1 - 8

- **Dr. Charles Zimmerman**
Teaching Pastor
Calvary Church
Souderton, PA

WEEK 6

July 29 - August 5

- **Dr. Lon Solomon**
Senior Pastor
McLean Bible Church
McLean, VA

WEEK 7

August 5 - 12

- **Dr. Kurt Bjorklund**
Senior Pastor
Orchard Hill Church
Wexford, PA

WEEK 3

July 8 - 15

- **Pastor Colin Smith**
Senior Pastor
Orchard Evangelical Free Church
Arlington Heights, IL

WEEK 8

August 12 - 19

- **Dr. Mark Bailey**
President
Dallas Theological Seminary
Dallas, TX

WEEK 4

July 15 - 22

- **Dr. Crawford Loritts**
Senior Pastor
Fellowship Bible Church
Roswell, GA
- **Dr. Jim Samra**
Senior Pastor
Calvary Church
Grand Rapids, MI

WEEK 9

August 19 - 26

- **Dr. Jay Abramson**
Senior Pastor
Valley Community Baptist Church
Avon, CT

WEEK 10

& Labor Day Weekend
August 26 - September 4

- **Dr. Woodrow Kroll**
Founder & Teacher
Woodrow Kroll Ministries
Lincoln, NE

*Speakers subject to change. For speaker biographies, go to www.camp-of-the-woods.org under our Summer Season tab.



Dr. Kurt Bjorklund



Tibbitts Auditorium



Dr. Ravi Zacharias

Seminar Speakers



WEEK 1
June 24 - July 1
Dr. Carol Kaminski
Associate Professor of Old Testament
Gordon-Conwell Theological Seminary
South Hamilton, MA



WEEK 2
July 1 - 8
Dr. Todd Williams
President
Cairn University
Langhorne, PA



WEEK 3
July 8 - 15
Dr. Dennis Hollinger
President
Gordon-Conwell Theological Seminary
South Hamilton, MA



WEEK 4
July 15 - 22
Dr. Steven Sanchez
Professor of Deuteronomy
Emmaus Bible College
Dubuque, IA



WEEK 5
July 22 - 29
Dr. Martin Sanders
President, Global Leadership Inc.
Director of Doctor of Ministry Program
Alliance Theological Seminary
Nyack, NY



&
Ty King
Director of Discipleship Ministries
Evangelical Church of Bangkok
Bangkok, Thailand



WEEK 6
July 29 - August 5
Lysa TerKeurst
NY Times Best-Selling Author
President, Proverbs 31 Ministries
Waxhaw, NC



WEEK 7
August 5 - 12
Dr. Jim Singleton
Associate Professor of Pastoral
Leadership and Evangelism
Gordon-Conwell Theological Seminary
South Hamilton, MA



WEEK 8
August 12 - 19
Dr. Mark Yarbrough
Associate Professor of Biblical Exposition
Dallas Theological Seminary
Dallas, TX



WEEK 9
August 19 - 26
Pastor Garrett Kell
Lead Pastor
Del Ray Baptist Church
Alexandria, VA



WEEK 10
August 26 - September 2
John Nieder
Director & Teacher
Live the Word
Dallas, TX

*Speakers subject to change.



Dr. Carol Kaminski



Dr. Todd Williams



Seminars Hosted in the Buirkle Center



Dr. Jim Singleton



Pastor Garrett Kell

Excellent Music That Glorifies Our Lord



Colton Necessary
2016 Worship Leader



Selections from "The Prince of Egypt"



Dr. John & Kathy Winkler
Director & Pianist



Our CAMP-of-the-WOODS musicians are fantastic. They perform at the Friday and Saturday night concerts with classical, Broadway, opera, big band and sacred music - truly something for everyone's musical tastes. They also lead worship at the daily chapels and Sunday Night Worship Service, perform at recitals, and play at the Monday Night Carnival. Near the end of the summer, we bring in outstanding musicians such as Tim Zimmerman and The King's Brass and Ron and Gary Matthews.



2016 Music Staff

Sports Emphasis



Baseball Emphasis



Soccer Emphasis



Tennis Emphasis

WEEK ONE

June 24 - July 1

TENNIS

Dave Schultz
Ages 9 - 15

WEEK TWO

July 1 - 8

FOOTBALL

Clayton Kendrick-Holmes,
Karl Swanke & Danny O'Rourke
Ages 9 - 15

WEEK THREE

July 8 - 15

SOCCER

John Andrulis & Donn Truax
Ages 6 - 15

WEEK FOUR

July 15 - 22

BASKETBALL

Bay Forrest, Jon Baldwin
& Joe Odhiambo
Ages 9 - 15

WEEK FIVE

July 22 - July 29

FLOOR HOCKEY

Matt Berner & Troy Loney
Ages 7 - 16

WEEK SIX

July 29 - August 5

BASEBALL

Mickey Weston
Ages 7 - 16

WEEK SEVEN

August 5 - 12

BASEBALL

Mickey Weston
Ages 7 - 16

WEEK EIGHT

August 12 - 19

VOLLEYBALL

Joel Dearing
Ages 13 - 18



Tennis Emphasis



KARL SWANKE
FOOTBALL

Former Green Bay
Packer All-Star



MICKEY WESTON
BASEBALL

Former NY Mets
Pitcher & Coach



BAY FORREST
BASKETBALL

Former NBA
First-round draft pick



TROY LONEY
FLOOR HOCKEY

Former Pittsburgh
Penguins star-forward

Kids' Klub

Our Kids' Klub offers daily morning programs for toddlers – 6th graders with qualified teachers and a solid biblical curriculum. They will enjoy meeting kids their own age while learning about Jesus. Additionally, our attentive nursery staff provides childcare for infants.



"Kids' Klub strengthened the faith of my children!" -Mary P.



Dr. Kate Trezise, Director,
Kids' Klub Children's Ministries

Teens

Middle School and High School teens meet Monday – Friday for a time of Bible teaching, games, worship, and small groups. The Teen Program offers a chance to enjoy making new friends, participate in activities, and strengthen their faith during their time at CAMP-of-the-WOODS.



Daily Teen Chapel

"Teen Staff is awesome! I can't say enough about their investment in our son." -Don J.



ENJOY FUN FAMILY ACTIVITIES IN THE ADIRONDACKS



There is so much to do during the days and evenings at CAMP-of-the-WOODS. Activities include hikes, canoe trips, tennis, shuffleboard, rock-climbing, water sports, mini-golf, sand volleyball, arts and crafts, and many games and competitions in the approximately 30,000 sq. ft. Sonju Sports Complex.

Want to kick back and relax? Enjoy our natural sand beach on beautiful Lake Pleasant or star gaze under the vast Adirondack night sky at a campfire! Camp is a great and safe place for kids.

Accommodation
Key

Algonquin	D-22
Arapaho	C-26
Ausable	C-24
Bayshore	I-3
Cayuga	D-20
Cherokee	F-10
Cheyenne	D-18
Chickasaw	E-17
Chippewa	C-5
Choctaw	F-6
Dakota	E-12
Delaware	G-12
Hopi	D-21
Iowa	C-25
Iroquois	D-23
Islotta	D-9
Larsen Lodge	E-13
Mesa	E-12
Mohawk	I-11
Mohican	K-12
Omaha	D-19
Oneida	E-16
Onondaga	E-17
Pleasant View	E-11
Pueblo	C-28
Purdy Center	N-21
Sacandaga	C-23
Seminole	D-24
Seneca	H-13
Shawnee	E-9
Sierra	F-23
Sioux	E-23
Teton	E-23
Totem	G-4
Wichita	B-28

- Emergency phone
- Handicap Parking/Access
- Public Rest Rooms
- Public Pay Phone
- Parking


CAMP-of-the-WOODS Map



Note: Map not drawn to scale

Summer 2017 Accommodations & Rates

BEACHFRONT

Refer to the  accommodations on map

Includes 21 buffet meals at the Hill Dining Hall, lodging and maid service
Gratuities for waiters/waitresses and maid service not included

PRICES ARE PER PERSON, PER WEEK

LARSEN LODGE (See page 17)
Maximum 2 occupants; contact Registrar for single occupancy rate
Purdy Center Dining Room meals included
Microwave and mini-fridge included
Adult: \$1,601.00



ALGONQUIN, CAYUGA & CHEYENNE
Minimum 4 occupants, with 2 adult rates
Microwave and mini-fridge included

Adult	12-15yrs.	8-11yrs.	5-7yrs.	1-4yrs.
\$1,135.00	\$634.60	\$419.27	\$317.30	\$83.40

ARAPAHO, AUSABLE, HOPI & SACANDAGA
Minimum 3 occupants, with 2 adult rates
Arapaho: minimum 4 occupants, with 2 adult rates
Mini-fridge included

Adult	12-15yrs.	8-11yrs.	5-7yrs.	1-4yrs.
\$997.00	\$579.40	\$384.77	\$289.70	\$69.60

IOWA, MESA, OMAHA, ONEIDA & ONONDAGA
Mesa, Oneida 1-8, Onondaga 1-8 & Omaha: no single occupancy
Mesa 22: minimum 4 occupants, with 2 adult rates
Oneida 9-10 & Onondaga 9-10: maximum 2 occupants
Iowa: Maximum 3 occupants
Oneida 9-10, Onondaga 9-10 & Iowa: contact Registrar for single occupancy rate

Adult	12-15yrs.	8-11yrs.	5-7yrs.	1-4yrs.
\$946.00	\$559.00	\$372.05	\$279.50	\$64.50


WICHITA
No single occupancy

Adult	12-15yrs.	8-11yrs.	5-7yrs.	1-4yrs.
\$889.00	\$536.20	\$357.77	\$268.10	\$58.80

CHICKASAW
Maximum 2 occupants; contact Registrar for single occupancy rate

Adult	12-15yrs.	8-11yrs.	5-7yrs.	1-4yrs.
\$880.00	\$532.60	\$355.55	\$266.30	\$57.90

LAKE SIDE & NON-LAKE SIDE

Refer to the  accommodations on map

Includes 21 buffet meals at the Hill Dining Hall, lodging and maid service
Gratuities for waiters/waitresses and maid service not included

PRICES ARE PER PERSON, PER WEEK

CHIPPEWA A, B, D, F & ISLOTTA B, D, G, H, J
IsloTTa: G - 3 rooms (minimum 4 occupants with 2 adult rates); B, D & J - 2 rooms; H - 1 room
Chippewa: A & B - 2 rooms; D - 1 room (contact Registrar for single occupancy rate); F - 3 rooms

Adult	12-15yrs.	8-11yrs.	5-7yrs.	1-4yrs.
\$946.00	\$559.00	\$372.05	\$279.50	\$64.50

CHEROKEE A, B, C, E
Cherokee A & C: minimum 4 occupants with 2 adult rates
Cherokee B & E: contact Registrar for single occupancy rate

Adult	12-15yrs.	8-11yrs.	5-7yrs.	1-4yrs.
\$874.00	\$530.20	\$354.05	\$265.10	\$57.30

ISLOTTA C
IsloTTa C: maximum 3 occupants; contact Registrar for single occupancy rate

Adult	12-15yrs.	8-11yrs.	5-7yrs.	1-4yrs.
\$865.00	\$526.60	\$351.77	\$263.30	\$56.40

DELAWARE
Delaware: minimum 4 occupants with 2 adult rates - 2 floors, 10 units

Adult	12-15yrs.	8-11yrs.	5-7yrs.	1-4yrs.
\$793.00	\$497.80	\$333.77	\$248.90	\$49.20

TOTEM
No single occupancy
Microwave and mini-fridge included

Adult	12-15yrs.	8-11yrs.	5-7yrs.	1-4yrs.
\$763.00	\$485.80	\$326.27	\$242.90	\$46.20

SENECA & SIOUX
Maximum 3 occupants
Seneca: 2 floors, 8 units
Contact Registrar for single occupancy rate

Adult	12-15yrs.	8-11yrs.	5-7yrs.	1-4yrs.
\$727.00	\$471.40	\$317.27	\$235.70	\$42.60

DAKOTA & SHAWNEE
Contact Registrar for single occupancy rate
Dakota: 2 one bedroom units, 2017 only

Adult	12-15yrs.	8-11yrs.	5-7yrs.	1-4yrs.
\$628.00	\$431.80	\$292.55	\$215.90	\$32.70


TETON
Contact Registrar for single occupancy rate

Adult	12-15yrs.	8-11yrs.	5-7yrs.	1-4yrs.
\$634.00	\$434.20	\$294.05	\$217.10	\$33.30

MOHAWK
No single occupancy
Microwave and mini-fridge included

Adult	12-15yrs.	8-11yrs.	5-7yrs.	1-4yrs.
\$622.00	\$429.40	\$291.05	\$214.70	\$32.10

EFFICIENCY UNITS

Refer to the  accommodations on map

Each unit has a kitchen
Includes maid service but NO MEALS
For optional meal plans for either dining room, contact our Registrar
Gratuities for waiters/waitresses and maid service not included

PRICES ARE PER UNIT, PER WEEK

PLEASANT VIEW 11 \$4,080.00
Downstairs apartment. 3 bedrooms, kitchen, screen porch, dining/living area, 2 baths, washer/dryer
\$234.00 per week, per person over 6 occupants

PLEASANT VIEW 21 \$3,348.00
Upstairs apartment, 3 bedrooms, kitchen/living area
2 full baths, washer/dryer
\$234.00 per week, per person over 6 occupants

WICHITA 11 \$2,445.00
Downstairs. 3 bedrooms and kitchen
\$174.00 per week, per person over 6 occupants

ISLOTTA A, E, F \$2,421.00
2 bedrooms, kitchen/living area
\$174.00 per week, per person over 6 occupants

CHIPPEWA E \$2,421.00
Upstairs apartment. 2 bedrooms, kitchen/living area
\$174.00 per week, per person over 7 occupants

PUEBLO 11 & 12 (downstairs)
PUEBLO 21 & 22 (upstairs) \$2,352.00
2 bedrooms, kitchen/living area
Maximum 6 per unit. No additional guests

WICHITA 21 \$2,352.00
Upstairs. 3 bedrooms and kitchen
Maximum 5 per unit. No additional guests

CHEROKEE D \$2,328.00
Kitchen/living area, 2 bedrooms
Maximum 6 per unit, no additional guests
\$174.00 per week, per person over 4 occupants

BAYSHORE A, B, C \$1,746.00
2 rooms with kitchen/living area
Maximum 5 per unit. No additional guests
\$174.00 per week, per person over 4 occupants

CHIPPEWA C, G, H \$1,746.00
2 rooms with kitchen/living area
\$174.00 per week, per person over 4 occupants

CHOCTAW \$1,398.00
Bedroom, kitchen/living area
\$144.00 per week, per person over 4 occupants

PURDY CENTER

Refer to the  accommodations on map

Includes 21 buffet meals at the Purdy Center Dining Room or Hill Dining Hall
Includes lodging and maid service. All units have bathrooms
Gratuities for waiters/waitresses and maid service not included
Contact Registrar for single occupancy rate
6 Handicap-accessible rooms (4 with queen beds, 2 with two twin beds)
Multiple room configurations available

PRICES ARE PER PERSON, PER WEEK

Pricing including Purdy Center Meals:

Adult	12-15yrs.	8-11yrs.	5-7yrs.	1-4yrs.
\$791.00	\$564.20	\$383.60	\$282.10	\$37.80

Pricing including Hill Dining Hall Meals:

Adult	12-15yrs.	8-11yrs.	5-7yrs.	1-4yrs.
\$679.00	\$452.20	\$305.27	\$226.10	\$37.80

TENTELS & HILL CABINS

Refer to the  accommodations on map

Most economical accommodations available
Includes 21 buffet meals at the Hill Dining Hall
Gratuities for waiters/waitresses not included
No maid service
Guests bring towels and linens. If needed, linens, blankets and towels are available at Linen room

IROQUOIS (2 units), **SEMINOLE** (7 units), **SIERRA** (7 units)
Showers are located at Beddingtons
Seminole: minimum 3 occupants
Iroquois & Sierra: Contact Registrar for single occupancy rate

Adult	12-15yrs.	8-11yrs.	5-7yrs.	1-4yrs.
\$373.00	\$313.78	\$216.59	\$197.00	\$29.70

MOHICAN (10 units)
Contact Registrar for single occupancy rate
No maid service provided

Adult	12-15yrs.	8-11yrs.	5-7yrs.	1-4yrs.
\$373.00	\$313.78	\$216.59	\$197.00	\$29.70



CANCELLATION POLICY

- DEPOSITS ARE NON-REFUNDABLE AND NON-TRANSFERABLE TO OTHER PERSONS AND/OR GROUPS.
- All cancellations must be made by telephone and confirmed in writing.
- If cancellation is made MORE THAN 4 weeks prior to arrival, Camp will refund the amount of the reservation MINUS the deposit.
- If cancellation is made LESS THAN 4 weeks prior to arrival, the FULL AMOUNT IS FORFEITED. Reservations are non-transferable.

Notes:

- Pricing is based on two or more occupants.
- For units with a minimum occupancy, at least two adult rates will be charged.
- Children's pricing applies when in same room with parents. If children under age 16 occupy a room without an adult, the Adult rate will be charged for one of the children.
- A fully completed and signed registration request, which includes names and ages of all guests, is required for all mail-in reservations.
- Where single occupancy is allowed, the single occupancy upcharge is waived weeks 1, 9, and 10.
- Group reservation requests cannot be made online.
- Additional \$10 annual Gospel Volunteers, Inc. membership fee per person 8 years and older.

For detailed accommodation layouts, please visit our website at www.camp-of-the-woods.org or contact our Registrar at (518) 548-4311 ext. 0.

Summer Accommodations

Don't let our name fool you: CAMP-of-the-WOODS is a modern Christian family resort. We have invested over \$30 million in recent years into accommodations and facilities. We offer a wide selection of lodging options ideal for large and small families as well as for couples and singles. There is sure to be something to suit your preferences. For more detailed information and pricing, please refer to pages 13-14, Accomodations & Rates.

If you have any questions about our accommodations, please contact our Registrar at (518)-548-4311 ext. 0.



Cherokee D Interior



Lakeside Islotta



Cayuga Porch



Delaware



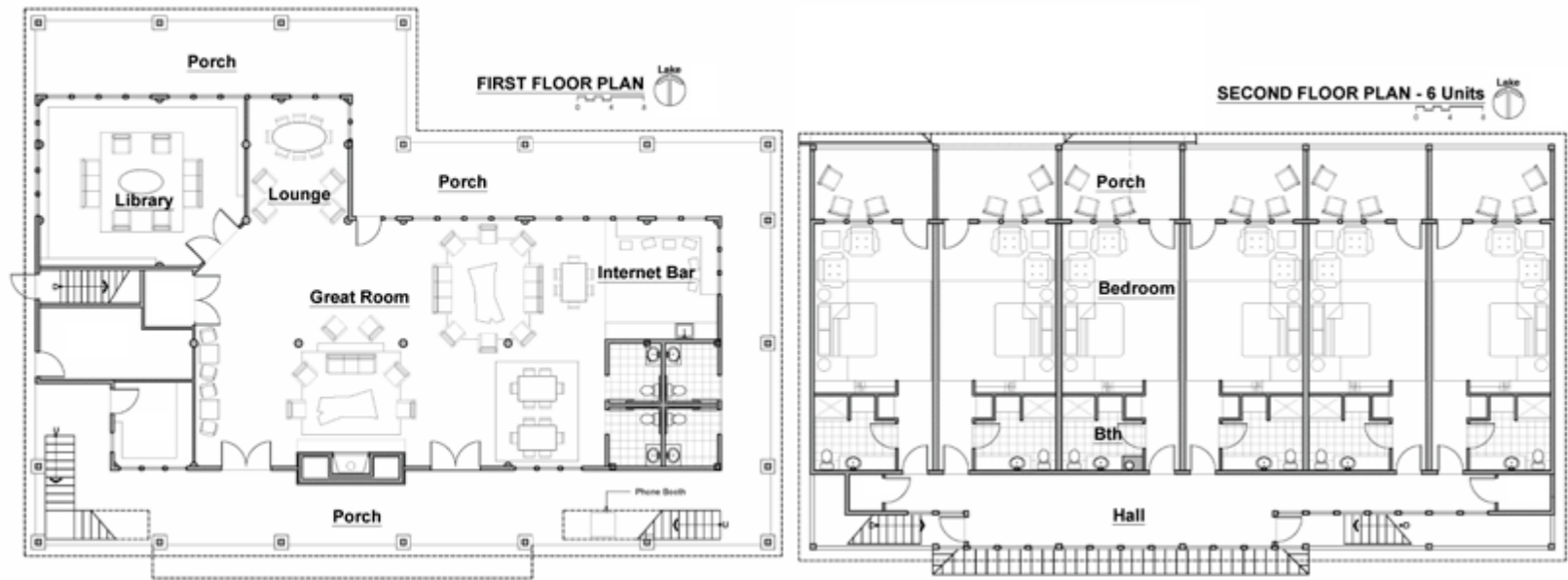
Beachfront Accommodations



Artist's Rendition

Larsen Lodge

In honor of Ralph Larsen, a dear friend of Camp and a Gospel Volunteers, Inc. board member, we are pleased to introduce the Larsen Lodge. Just steps from the beach, this premium, year-round accommodation features 6 quality suites. On the upper level, each air conditioned unit has a bedroom with a king bed, a bathroom, and a porch overlooking Lake Pleasant. The lower level will provide a beautiful space to relax and fellowship with friends and family in the library, lounge, great room, and many porch areas. We are excited to be able to offer this new accommodation for Summer 2017 and for years to come.





***“CAMP-of-the-WOODS
has become a
second home to us.”***
- Nanci D.



***“Everyone was
considerate and
eager to serve.”***
- Karen U.

***“Every year
we have been
here has been a
spiritual growth
experience.”***
- Elmer & Lori D.



***“Camp holds
many of my best
memories, and I am
glad to share them
with my kids now.”***
- Rebekah D.





Summer Staff

Over 300 college and high school students from the United States and abroad, plus 40 year-round staff, work together to make CAMP-of-the-WOODS special for our guests. Our staff members also meet many new friends from around the world and grow personally through outstanding Bible teaching, staff fellowship, and small groups.

Visit our website at www.camp-of-the-woods.org/employment or find the Staff at COTW page on Facebook!



Tapawingo

Island Camp for Girls For 9 - 17 year olds

Our mission is to glorify Jesus Christ as Lord through personal example, meaningful activity, Biblical direction and Christ-centered relationships.

Campers enjoy our godly staff in a safe, friendly environment with a no gossip policy. We offer many exciting activities, including banana boating, water skiing, archery, wake boarding, arts & crafts, sailing, and hiking in the beautiful Adirondacks!

Our popular Counselor-in-Training (CIT) program is offered to girls ages 16 - 17 who desire to grow in Christ and their leadership ability. Two four-week sessions are offered.

Tapawingo has sold out quickly for the past few years, so please get your applications in early.

www.camp-of-the-woods.org/tapawingo

LIFT

Leaders in Further Training For 19 - 26 year olds

LIFT is a unique, semester-long program designed to train a new generation of Christian leaders. LIFT graduates are better equipped to face the challenges of the 21st century with a biblically grounded and culturally informed faith.

Students grow through solid teaching from our staff and guest teachers, one-on-one discipleship, challenging outdoor adventures, and many opportunities for outreach and service.

Perspectives are enriched and transformed through the 2 week cross-cultural experiences. Upcoming trips will be to Guatemala and Ecuador.

LIFT students are now able to enroll at Cairn University, Houghton College, Nyack College, or Roberts Wesleyan College for college credit.

LIFT is offered at no cost to our students! (Students pay for their own health insurance and raise partial support for the missions trip.)

www.camp-of-the-woods.org/lift-discipleship





Spacious Meeting Rooms

Don't Miss These Family Retreats!

New Year's Celebration & Presidents' Day Weekend

CAMP-of-the-WOODS offers two special retreats designed for families and individuals during the conference season. We provide solid Bible teaching by great teachers, wonderful music, and ample opportunities to enjoy the Adirondack winter while sharing fellowship with other Christians. We hope you can join us!

Visit the 'Family Retreats' section of our website under the Conference Season tab for more information on these exciting weekends!

Enjoy our Conference Season

From Labor Day to Mid-June

CAMP-of-the-WOODS is a year-round, full-service conference center that hosts a variety of church and Christian ministry retreats including men, women, youth, college, couples, and leadership retreats. Groups range in size | from 25 to 1,300. Groups bring speakers and plan their own programs, while Camp provides great food, upscale lodging, spacious meeting rooms, and state-of-the-art recreational facilities. We offer both adult and youth weekends, with specific services and menus for each.

There is a lot to do in the Adirondacks, and groups enjoy self-guided hiking, tennis, mini-golf, shuffleboard, ice skating, tubing, cross-country skiing, snow shoeing, and more (depending on the season and weather). The Sonju Sports Complex, with its three-court gymnasium, family game room, and climbing wall, is loved by groups year-round. Join the over 8,000 people who came to CAMP-of-the-WOODS for conferences and retreats last season. We promise your experience will be fun, meaningful, and Christ-centered.

Contact our Group Coordinator at
518-548-4311 ext. 0 or
conferences@cotw.org



Beautiful Facilities



Recreation in the Sonju Sports Complex

NEW YEAR'S CELEBRATION
Dec. 30 - Jan. 2
Special Guest Speaker:
DR. STUART MCALLISTER



PRESIDENTS' DAY WEEKEND
Feb. 17 - Feb. 20
Special Guest Speaker:
DR. CHARLES ZIMMERMAN





CAMP-of-the-WOODS is a Religious Not-for-Profit Membership Organization owned and operated by Gospel Volunteers, Inc., located in New York State.

CAMP-of-the-WOODS Mission Statement:

- To present the Biblical truths of Jesus Christ
- To develop Christian leaders
- To strengthen the faith of individuals and families
- To promote global evangelism

Our Seven *Non-Negotiable* Essentials:

- We believe in the divine authority of the 66 books of the Bible alone.
- We believe in one God, eternally existing in three distinct persons: Father, Son, and Holy Spirit.
- We believe in the deity and humanity of Jesus Christ in one person with two distinct natures.
- We believe that all mankind is lost eternally without Jesus Christ.
- We believe in substitutionary atonement as well as the physical bodily resurrection and ascension into Heaven of Jesus Christ.
- We believe that the only way to Heaven is by grace through faith in Jesus Christ alone, apart from any good works on our part.
- We believe in the physical return of Jesus Christ, and that everyone will spend eternity consciously and bodily in either Heaven or Hell.



Watch our Videos



Join us on Facebook



Follow us on Twitter



Follow us on Instagram

Gospel Volunteers, Inc.
CAMP-of-the-WOODS
P.O. Box 250
Speculator, New York 12164-0250
518.548.4311

Address Service Requested



Memorable Vacations with a Christ-Centered Focus