



Broadway Presbyterian Church

# Broadway Visitor

Where we build relationships  
and expand connections

**WELCOME,**

**REV. CHARLES CUNNINGHAM!**

Broadway is very fortunate to have Rev. Charles Cunningham be our new transitional pastor. He will be here 24 hours a week beginning October 1.

Here's a little bit about Charles ... He has been a long-time Presbyterian, very involved with the church. In 1991, Rev. Cunningham and his wife, Janet, led the ministry at Beulah Presbyterian Church in rural Orion where he was well-loved and weathered many a storm. After 20 years, the vision of Beulah changed. Charles and Janet felt the Lord leading them in a different direction. And then Broadway called and the Lord answered with this wonderful couple!

Charles will be in the pulpit at 9:30 Sunday mornings, will be doing pastoral care during the week, moderating Session, as well as starting a Bible Study class. Once he gets settled, he will post office hours for your convenience.

Welcome, Charles!

Volume XXVI, Issue 10

October 2012

## Inside this Issue:

Thank You from Lois Cobert's Family	2
Presbyterian Women	
Our Thoughts & Prayers Session	3
Book Club News	4
Important Smart Choice News	5
October Lectionary	6
October Events	7
Weekly Events	

## OCTOBERFEST AND HEALTH FAIR

**Saturday, October 20**  
**10 A.M. TO 2 P.M.**  
**at Broadway Church**

**Games and Fun**  
**for EVERYONE!**



Health care organizations and representatives from key community resources will be available.  
Call or Email Mary at the Church office with questions.





The family of Lois Cobert thanks all who helped with the luncheon after the funeral.

## **PRESBYTERIAN WOMEN**

Bright and early on September 15th, Broadway's large van took 14 down to the St. Luke Union Church in Bloomington, IL for the 'Fall Gathering of PW.' Five were from other local churches, 8 from Broadway and the driver. It was a good day.

Also Broadway PW held the "Autumn Supper" at church, September 24th. A big Thank You to our speakers for the evening, who were Mary Pedersen, Broadway's Health Ministry Coordinator, and Cherry McIlvain reported on her trip to Orlando, FL. PW Church Wide Gathering,

and the members that helped with the meal and decorating.

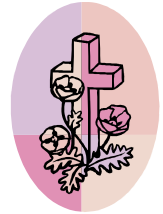
We are looking for new fundraising ideas—have any?—please share, thanks.

I'll leave you with this: Being a Christian is like being a pumpkin. God lifts you up, takes you in, and washes all the dirt off of you. He opens you up, touches you deep inside and scoops out all the yucky stuff—including seeds of doubt, hate, greed, etc. Then He carves you a new smiling face and puts His light inside you to shine for all the world to see. This was passed to me from another pumpkin. Now it is your turn to pass it to a pumpkin. Happy Fall!

- Shirley Nelson,  
PW Moderator

## OUR THOUGHTS AND PRAYERS

Our thoughts and prayers are with the family of Lois Cobert. We also pray for Nomie Budelier, Carole and Neal Lloyd, and Bea and Don Gibson.



*Please note: If you or a loved one is hospitalized or scheduled for surgery, please notify the church office as soon as you are able.*

## SESSION

### ***Actions Taken September 13, 2012***

The Session meets on the second Thursday of the month. Session meetings are open (voice may be granted by action of the Session). There may be rare occasions when the discussion is of a confidential nature and that portion of the meeting must be closed.

The following actions were taken at the most recent meeting of Session:

- Approving the sale of popcorn by Cub Scout Pack 213 on September 23, 2012,
- Receiving Cathy MacDonald into the membership, by Letter of Transfer,
- Providing financial support (for tuition and class materials) for the Commissioned Ruling Elder online training through the university of Dubuque Theological Seminary for Elders Tika Bista and Juan Salinas (funding from grants, with access to the Memorial Fund pending that funding),
- Offering Kerry Gomez the Keyboardist / Worship Lead position for the 10:45 Worship Service for an initial three month trial period (renewable) with evaluation and review at the conclusion of this period,
- Scheduling a Unified Worship Service in celebration of World-Wide Communion Sunday and reception of new members at 10:45 on October 7, 2012.

Session expressed its gratitude to Rev. Maura McGrath Nagle for serving as moderator and her spiritual guidance during Session meetings this year.

- Brian McMaster,  
Clerk of Session

## BOOK CLUB NEWS

The Karon Book Club will meet Wednesday, October 10, at the TPC Deere Run for lunch at 11:30. The address is 3100 Heather Knoll in Silvis, IL. Our book for October discussion is Clara and Mr. Tiffany, a novel by Susan Vreeland. Ms. Vreeland is the New York Times bestselling author of Girl in Hyacinth Blue.

Clara and Mr. Tiffany by Susan Vreeland

Against the unforgettable backdrop of New York near the turn of the twentieth century, from the Gilded Age world of formal balls and opera to the immigrant poverty of the Lower East Side, bestselling author Susan Vreeland again breathes life into a work of art in this extraordinary novel, which brings a woman once lost in the shadows into vivid color.

It's 1893, and at the Chicago World's Fair, Louis Comfort Tiffany makes his debut with a luminous exhibition of innovative stained-glass windows, which he hopes will honor his family business and earn him a place on the international artistic stage. But behind the scenes in his New York studio is the freethinking Clara Driscoll, head of his women's division. Publicly unrecognized by Tiffany, Clara conceives of and designs nearly all of the iconic leaded-glass lamps for which he is long remembered.

Clara struggles for her desire for artistic recognition and the seemingly insurmountable challenges that she faces as a professional woman, which ultimately force her to protest against the company she has worked so hard to cultivate. She also yearns for love and companionship, and is devoted in different ways to five men, including Tiffany, who enforces a strict policy: he does not hire married women, and any who do marry while under his employ must resign immediately. Eventually, like many women, Clara must decide what makes her happiest—the professional world of her hands or the personal world of her heart.

- Judy Medley

REVERENDFUN.COM COPYRIGHT BIBLE GATEWAY



10-01-2012

THE WISE MEN, BEING WISE, GOT ALL OF  
THEIR CHRISTMAS SHOPPING DONE WEEKS  
BEFORE THE RUSH

## IMPORTANT SMART CHOICE NEWS

Due to the low volume of orders, Broadway Church has decided to discontinue Smart Choice Foods.

We will be looking at other ways to serve our community at our next Vision 2013 meeting to be held later this month.

If you or someone you know would like to be part of the Smart Choice Food Program, we urge you to contact New Life Fellowship in Moline. It's still one of the best deals in town!

## OCTOBER LECTIONARY

October 7

Job 1:1, 2:1-10

Ps. 26

Heb. 1:1-4, 2:5-12

Mark 10:2-16

October 14

Job 23:1-9, 16-17

Ps. 22: 1-15

Heb. 4:12-16

Mark 10:17-31

October 21

Job 38:1-7

Ps. 104:1-9, 24, 35c

Heb. 5:1-10

Mark 10:35-45

October 28

Job 42:1-6, 10-17

Ps. 34:1-8 (19-22)

Heb. 7:23-28

Mark 10:46-52



## **“BROADWAY VISITOR”** **NEWSLETTER DEADLINE**

Please turn in completed newsletter articles to the office,  
or email to Karen Fialek  
(Karen.Fialek@BroadwayQC.org)

***All November 2012 newsletter articles are due October 15.***

Any submissions received after this date  
will only be included if available space allows.

## OCTOBER EVENTS

Oct. 4 (Thurs.)	9:00	Parent Café
Oct. 10 (Weds.)	6:00	Project NOW
Oct. 11 (Thurs.)	12:00	Friendship Manor Circle
	6:00	Session
Oct. 18 (Thurs.)	6:30	Rebekah Circle
		Broadway Historic
Oct. 20 (Sat.)	10:00	Octoberfest & Health Fair
Oct. 23 (Tues.)	8:30	Lincoln's Challenge Academy
	4:00	Head Start Pumpkin Party
Oct. 24 (Weds.)	6:00	Project NOW Financial Fitness

*For more information on any of our events,  
please contact the church office  
or see our website ([www.BroadwayQC.org](http://www.BroadwayQC.org)).*

## WEEKLY EVENTS

Sun.:	9:30	Traditional Worship	Weds.:	10:00	Adult SEFS *
	10:45	Mosaic Worship		4:00	Afterschool Program
		Current Issues Class		4:15	Bell Choir Rehearsal
	11:45	Life of Jesus	Thurs.:	4:00	Afterschool Program
	1:00	Nepali Worship		5:30	TOPS
Mon.:	10:00	Adult SEFS *		8:00	AA
	4:00	Afterschool Program	Fri.:	4:00	Afterschool Program
	5:30	Cub Scouts		8:00	AA
	6:15	DeMolay			
Tues.:	10:00	Adult SEFS *			
	4:00	Afterschool Program			

\* No class 10/8-10/20 for SEFS



710 23<sup>rd</sup> Street, Rock Island, IL 61201

**We're on the Web!**

[www.BroadwayQC.org](http://www.BroadwayQC.org)

October- 2012